

Stainless
Steel
Tubular
Products

aalco[®]

Disclaimer

This Data is indicative only and as such is not to be relied upon in place of the full specification. In particular, mechanical property requirements vary widely with temper, product and product dimensions. All information is based on our present knowledge and is given in good faith. No liability will be accepted by the Company in respect of any action taken by any third party in reliance thereon.

Please note that the Issue date shown below is no guarantee of accuracy or whether the information herein is up to date or is from the most recent references available at that date.

The information provided in this publication has been drawn from various recognised sources, including EN Standards, recognised industry references (printed & online) and manufacturers' data. No guarantee is given that the information is from the latest issue of those sources or about the accuracy of those sources.

Material supplied by the Company may vary significantly from this data, but will conform to all relevant and applicable standards.

As the products detailed may be used for a wide variety of purposes and as the Company has no control over their use; the Company specifically excludes all conditions or warranties expressed or implied by statute or otherwise as to dimensions, properties and/or fitness for any particular purpose, whether expressed or implied.

Advice given by the Company to any third party is given for that party's assistance only and without liability on the part of the Company. All transactions are subject to the Company's current Conditions of Sale. The extent of the Company's liabilities to any customer is clearly set out in those Conditions; a copy of which is available on request.

Weights

All weights shown in this publication are for guidance only. They are calculated using nominal dimensions and scientifically recognised densities. Please note that in practice, the actual weight can vary significantly from the theoretical weight due to variations in manufacturing tolerances and compositions.

Copyright 2015: All Rights reserved: Aalco Metals Limited. No part of this publication may be reproduced, sorted in a retrieval system or transmitted in any form or by any means, electronic, mechanical, recording or otherwise without the prior written consent of the proprietor.

Aalco is a registered trade mark of Aalco Metals Limited.

Issue No. 2 – Nov 2015

Aalco is the UK's largest independent multi-metals stockholder. Customers from every sector of the UK manufacturing and engineering industries, whether small local businesses or large multinational corporations, benefit from a cost-effective single source for all their metals requirements.

Aalco – delivering customer service and investing in capability:

- ◊ An inventory that includes aluminium, stainless steel, copper, brass, bronze and nickel alloys in all semi-finished forms
- ◊ Comprehensive processing services providing items cut and/or finished to customer requirements
- ◊ Eighteen locations bringing local service to every corner of the UK
- ◊ Ongoing investment in technology and logistics to ensure on-time delivery

No order is too large or too small and Aalco offers a responsive and competitive service for supplying anything from single item orders to major JIT contracts, tailoring this service to individual needs.

Whatever your requirement, in whatever quantity, your local Aalco service centre is ready and willing to satisfy your needs. For a quotation, for further information, more extensive technical information, advice on product selection or to place an order, please contact your local Aalco service centre or refer to the web site www.aalco.co.uk.

Service

The most comprehensive stock range; the highest investment in processing equipment; local service centres nationwide; helpful, friendly, knowledgeable staff and the industry's biggest fleet of delivery vehicles – it all adds up to unbeatable service.

Aalco has maintained market leadership over many years through an absolute dedication to customer service – a service level that is continuously monitored and improved through key performance indicators.

That's why, for reliable, on-time delivery of exactly what you want, when and where you need it, whether it's a small one-off item or a complex JIT contract, Aalco is the essential first choice.

People

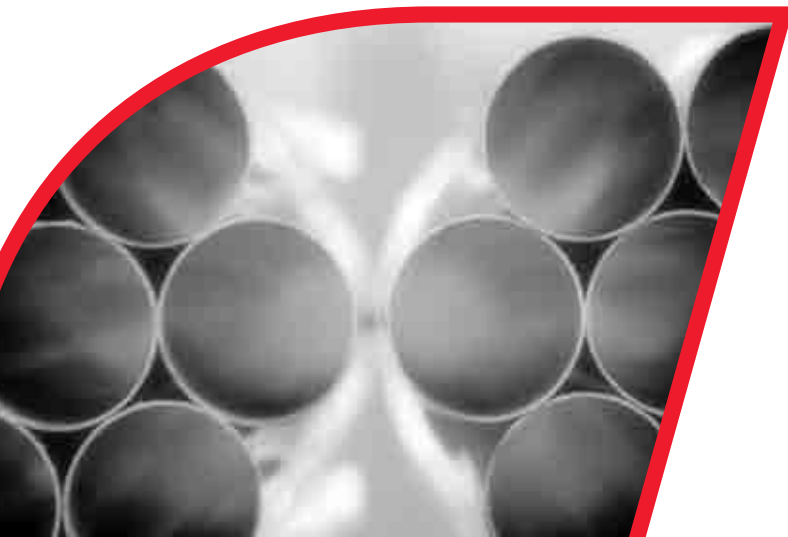
Exceptional customer service starts with people. Aalco develops and retains high quality personnel using a variety of 'in house' courses which cover both skills training, product knowledge and teamwork.

Every Aalco service centre has a dedicated team of people working together to provide an unbeatable service to customers in their region. Customers can expect to receive a quick and informed response to any enquiries for material or for information.

Quality

Aalco takes great care when selecting manufacturing sources for its products and every mill we use is measured against a series of predetermined quality control requirements. All products supplied by Aalco conform to the relevant BS or international standards. Certification can be supplied on request.

Aalco service centres operate a quality manual designed to ISO9001/2008 requirements. Many vendor approvals and bespoke quality control systems are operated through individual Aalco service centres.





Tube

Seamless to ASTM A269, imperial sizes from 1/8" O/D x 24swg to 4" O/D x 1/4" wall in grade 316L

Seamless to ASTM A269, grades 304L & 316L, in metric sizes 6mm O/D x 0.5mm wall to 38mm O/D x 4mm wall

Decorative – Round, Square, Rectangular

Structural – Square and Rectangular up to 250mm

Hygienic (see below)

Welded Metric Nominal Internal Diameter (see below)

Pipe

Seamless and Welded to ASTM A312 from 1/8" to 24" in grades 304L & 316L

Flanges

ASTM A182 / ANSI B16.5

BS 10 Table E, Grade 316L

BS 4504 / EN 1092 Raised Face, 16 Bar

Backing Flanges in Aluminium and Coated Mild Steel

Fittings

Butt Weld Fittings, Seamless and Welded, to ASTM A403 in grades 304L & 316L including elbows, tees & reducers

BSP Screwed Fittings, grade 316 from 1/8" to 3"

Hygienic fittings (see below)

Welded Metric Nominal Internal Diameter (see below)

Hygienic Tube and Fittings

Grades 304L & 316L 3/4" O/D to 4" O/D:

Tube – As Welded & Descaled, Annealed & Polished or Bright Annealed

Bends, Fitted Bends, Tees, Reducers, Clamps & Tube Hangers

Unions – RJT, IDF & DIN

Metric – Welded Nominal Internal Diameter (ND)

From 18mm O/D x 1.5mm wall to 910mm O/D x 5mm wall

Grades 1.4432 (316L High Molybdenum) & 1.4307 (304L)

Tube, Elbows, Tees, Reducers, Collars, End Caps, Tube Clamps & Clips

Backing Flanges in Aluminium & Coated Mild Steel

Further information is provided by these publications, available either from your local Service Centre or at www.aalco.co.uk



Product Guide

Technical information on applications, uses and specifications for stainless

steel, aluminium, copper, brass and bronze.

Stocklist



A guide to the Aalco standard stock range

in stainless steel, aluminium, copper, brass and bronze.



Metric

A guide to the range of light-walled nominal diameter metric stainless steel tubular products used

in water treatment, pulp & paper and other industries.



Handrail

A guide to the Aalco range of stainless steel handrail/balustrade systems

comprising tube and slotted tube plus associated fittings.

Hygienics

Introduction/Tube Range

Stainless Steel Hygienics is the name given to a range of tube and fittings used in applications requiring a clean and sanitary flow of liquids and where it is essential to avoid contamination of the products being carried. These applications cover the food processing, beverage, biotech and pharmaceutical industries including breweries and dairies.

- ◊ The applications are low pressure with a maximum of 150lbs.
- ◊ The products are available in grades 304L and-316L.
- ◊ The size range is from 1/2 inch to 4 inch O/D.
- ◊ The tube and fittings are of welded construction with the internal bead rolled to flatten it and eliminate crevices, thus preventing interruptions to the flow and eliminating the risk of contamination or bug traps as well as facilitate easy cleaning.
- ◊ The tube and fittings are offered with a choice of external finishes:
 - Descaled
 - Bright Annealed
 - Dull Polished
 - Semi-Bright or Bright Polished.

Manufacturing standards

- ◊ Hygienic tubes are manufactured to ASTM A270, DIN 11850, ISO 2037 and BS 4825 Part 1.
- ◊ Hygienic fittings are manufactured to BS 4825 Parts 2 to 5.

Markings on tube and fittings

Tube and fittings with a bright annealed or polished finish will be unmarked.

Range/Sizes - Tube

Sizes to ASTM A270

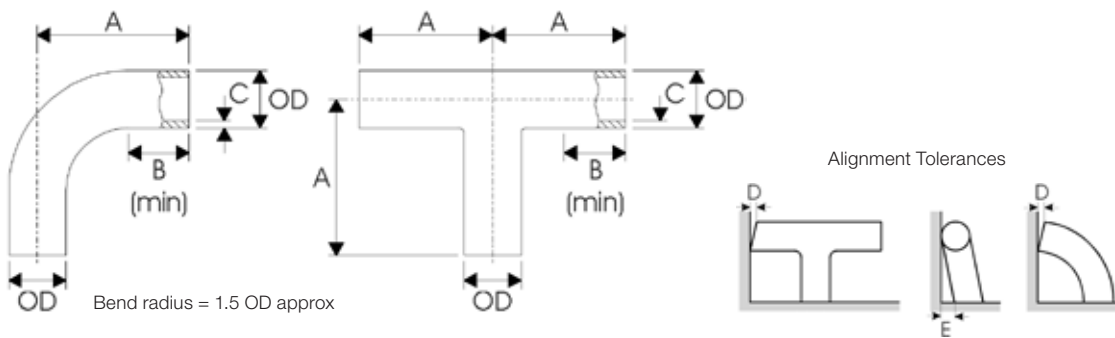
O/D	Wall		Weight
	in	mm	
³ / ₄	16	1.63	0.70
1	16	1.63	0.99
1½	16	1.63	1.51
2	16	1.63	1.88
2½	16	1.63	2.49
3	16	1.63	3.01
4	16	1.63	4.03
4	14	2.03	4.98

Sizes to DIN 11850

O/D	Wall	Weight
in	mm	kg/m
1	1.5	0.90
1½	1.5	1.38
2	1.5	1.85
2½	1.5	2.34
3	1.5	2.81
4	2.0	5.02



There are two types of bends and tees available, the Short type and Long type. For bends, the Short type simply comprises a 90° bend, while the Long type has a straight leg added at both ends. Tees have equivalent dimensions making them interchangeable. The straight leg of long type bends and tees was originally added to enable expanded type clamp and union parts to be fitted, but they are now widely used in all-welded installations.



Dimensions and tolerances

OD	Short Type			Long Type			Max Deviation	
	A	B	C	A	B	C	D	E
mm	mm	mm	mm	mm	mm	mm	mm	mm
12.7	-	-	-	45	25	1.2	0.1	0.2
15.88	-	-	-	55	25	1.2	0.2	0.4
19.05	-	-	-	60	25	1.2	0.2	0.4
25.4	43.5	25	1.6	65	25	1.6 (or 1.2 ¹)	0.25	0.5
38.1	63.5	25	1.6	85	25	1.6 (or 1.2 ¹)	0.3	0.6
50.8	88.5	30	1.6	110	30	1.6 (or 1.2 ¹)	0.4	0.8
63.5	113.5	35	1.6	135	35	1.6	0.5	1.0
76.2	133.5	38	1.6	155	38	1.6	0.5	1.0
101.6	173.5	38	2.0	195	38	2.0	0.7	1.4

Notes

¹ The 1.2mm wall thickness is for use with expanded fittings.

◊ Length tolerances. +0.5mm, -0mm.

Hygienics

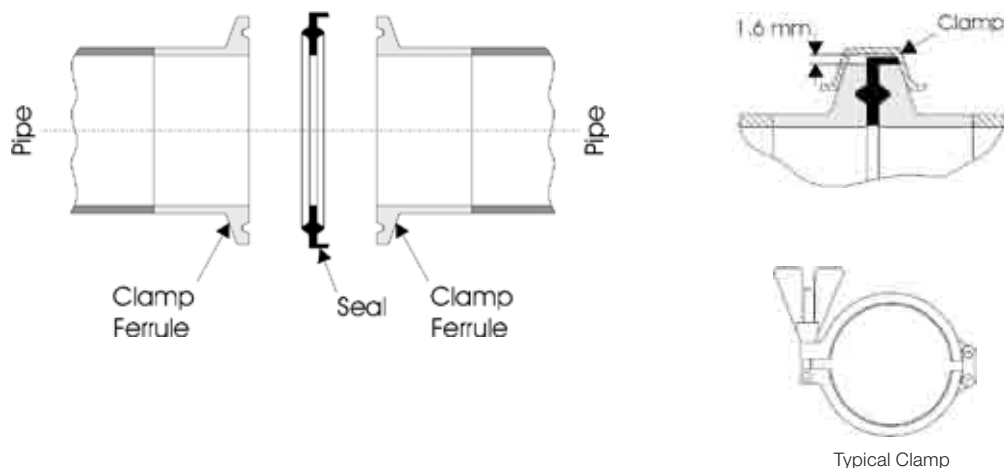
Clamp Fittings - BS 4825 : Part 3



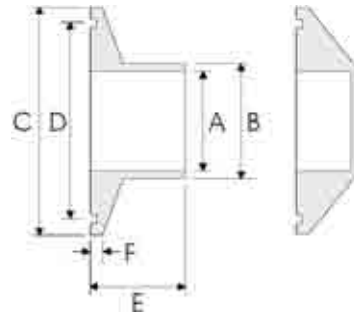
Clamp fittings provide a crevice free joint and, depending on the clamp design, requires no tools for assembly or dismantling for cleaning. Provides quick method of regularly opening up a system and often has some kind of closure device such as a 'Triclover' clamp. Used where corrosion and contamination are particular hazards, as in the pharmaceutical industry. Also used in systems carrying warm semi-solids and viscous liquids, such as chocolate and tomato sauce, which must not cool in the line but tend to cause regular blockages.

Clamp fittings comprise four parts – two welding ferrules, a seal ring and a clamp. The ends of the tubes and/or fittings to be joined have a welding ferrule fitted by welding (or expansion on to expanded type parts if used). The joint is made by positioning the welding ferrules together, with a seal inserted between the faces, and then clamping the ferrules together. The clamp is not in contact with the contents of the pipe and may be made of any suitable material.

Assembly



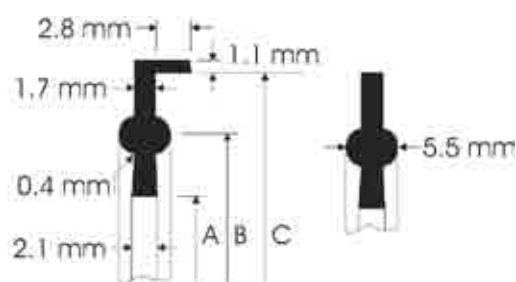
Welding ferrule



OD	A	B	C	D	E	F
mm	mm	mm	mm	mm	mm	mm
25.4	22.2	25.65	50.5	43.5	21.5	2.85
38.1	34.9	38.35	50.5	43.5	21.5	2.85
50.8	47.6	51.05	64.0	56.5	21.5	2.85
63.5	60.3	63.75	77.5	70.5	21.5	2.85
76.2	73.0	76.45	91.0	83.5	21.5	2.85
101.6	97.6	101.85	119.0	110.0	21.5	2.85

Seals

Two types of seal are defined in BS 4825, the first for use when a joint is to be frequently disconnected and the second for use in less frequently disconnected joints. The dimensions of both types are given below:



OD	A	B	C
mm	mm	mm	mm
25.4	22.8	43.5	50.5
38.1	35.5	43.5	50.5
50.8	48.2	56.5	64.0
63.5	60.5	70.5	77.5
76.2	73.2	83.5	91.0
101.6	97.8	110.0	119.0

Hygienics

IDF Unions - BS 4825 : Part 4



The International Dairy Federation, IDF, coupling provides a crevice free joint originally designed for applications where frequent dismantling for cleaning would not be necessary. They may be operated at pressures up to 1.6 MPa.

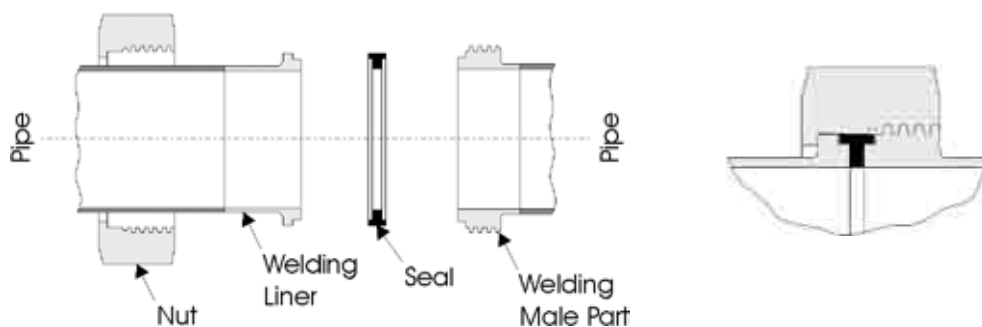
The Liner is machined and the Nitrile or EPDM Seal is a square section and is more substantial than the RJT. The IDF Union also has a thicker Nut than the RJT. It is machined rather than pressed and is considered easier to use.

Compared to the RJT, the IDF has a smoother and cleaner flow line that is free of crevices and bug traps. It is used where CIP (Clean In Place) systems prevail, with the RJT only tending to be used where very regular access is needed.

IDF type couplings comprise four parts – a male part, a liner, a seal ring and a hexagonal or round nut. The ends of the tubes and/or fittings to be joined have a male part and liner fitted by welding (or expansion on to expanded type parts if used). The joint is made by positioning the male part and the liner together, with a seal inserted between. The nut is then slipped over the liner, screwed on to the male part and tightened against the liner to compress the seal.

BS 4825 : Part 3 requirements for IDF union parts follow.

Assembly

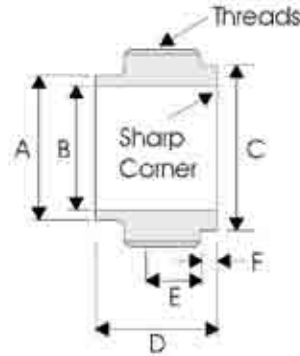


The illustration above shows the assembly of an IDF union with welded parts.

Options:

- ◊ Expanded IDF expanded type union parts are available.
- ◊ Round nuts. True IDF round nuts have no slots on their circumference, making them tamper proof, but necessitating the use of a special spanner.

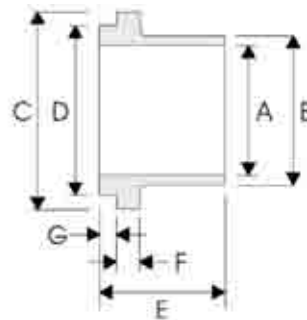
Welding male part (threaded)



Notes
- An ACME form thread is used.

OD	A	B	C	D	E	F
mm	mm	mm	mm	mm	mm	mm
25.4	25.65	22.2	29.2	21.5	13.5	3.0
38.1	38.35	34.9	42.7	21.5	13.5	3.0
50.8	51.05	47.6	56.2	21.5	13.5	3.0
63.5	63.75	60.3	69.9	21.5	13.5	3.0
76.2	76.45	73.0	82.6	21.5	13.5	3.0
101.6	101.85	97.6	111.1	30.0	16.0	3.2

Welding liner

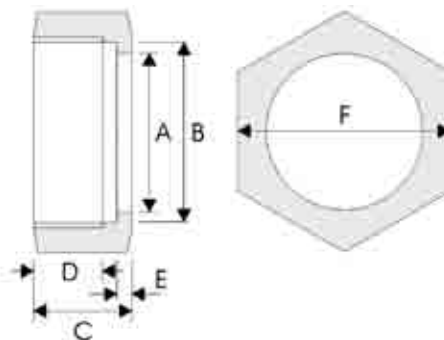


OD	A	B	C	D	E	F	G
mm	mm	mm	mm	mm	mm	mm	mm
25.4	22.2	25.65	33.8	29.2	21.5	4.0	3.0
38.1	34.9	38.35	47.0	42.7	21.5	4.0	3.0
50.8	47.6	51.05	60.5	56.2	21.5	4.0	3.0
63.5	60.3	63.75	74.0	69.9	21.5	4.0	3.0
76.2	73.0	76.45	87.5	82.6	21.5	4.0	3.0
101.6	97.6	101.85	120.6	111.1	30.0	4.75	3.2

Hygienics

IDF Unions - BS 4825 : Part 4

Hexagonal nut

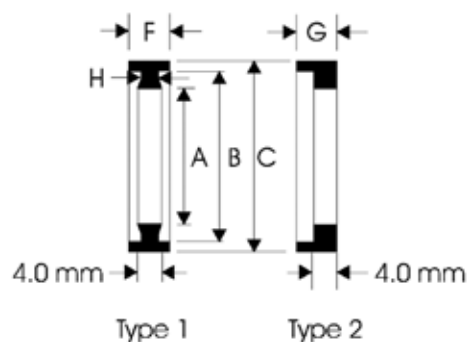


Notes

- An ACME form thread is used.
- A round nut may be specified.

OD	A	B	C	D	E	F
mm	mm	mm	mm	mm	mm	mm
25.4	30.5	34.34	30	16	3.5	46
38.1	43.5	47.86	30	16	3.5	60
50.8	57.0	61.37	30	16	3.5	75
63.5	70.7	74.88	30	16	3.5	90
76.2	83.3	88.40	30	16	3.5	105
101.6	112.0	122.00	35	20	4.7	133

Seals



OD	A	B	C	F	G	H
mm	mm	mm	mm	mm	mm	mm
25.4	23.2	29.2	32.5	7.0	6.0	3.0
38.1	35.9	42.7	46.0	7.0	6.0	3.0
50.8	48.6	56.2	59.5	7.0	6.0	3.0
63.5	61.3	69.9	73.2	7.0	6.0	3.0
76.2	74.0	82.6	86.5	7.0	6.0	3.0
101.6	98.6	111.0	119.0	9.6	6.0	5.0

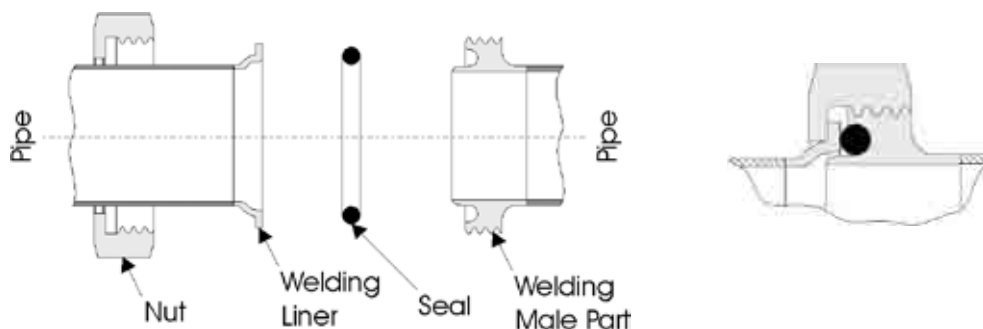


Ring Joint Type, RJT, unions are easily assembled and dismantled for cleaning purposes, this being a result of their having a Whitworth form thread. The RJT joint is not crevice free and may accumulate a deposit of the product being passed. However, present day cleaning systems are able to sanitise this area successfully without dismantling in the majority of applications. RJT unions may be operated at pressures up to 1.0 MPa.

RJT type couplings comprise four parts – a male part, a liner, an O-ring seal and a hexagonal nut. The ends of the tubes and/or fittings to be joined have a male part and liner fitted by welding (or expansion on to expanded type parts if used). The joint is made by positioning the male part and the liner together, with a seal inserted between. The nut is then slipped over the liner, screwed on to the male part and tightened against the liner to compress the seal.

BS 4825: Part 5 requirements for RJT union parts follow. Additional RJT components are also available (see page 6-11).

Assembly



The illustration above shows the assembly of an RJT union with welded parts.

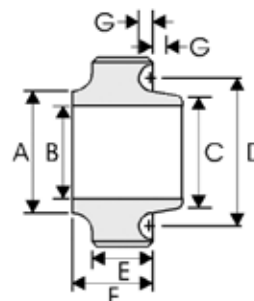
Options:

- ◊ Expanded RJT expanded type union parts are available.

Hygienics

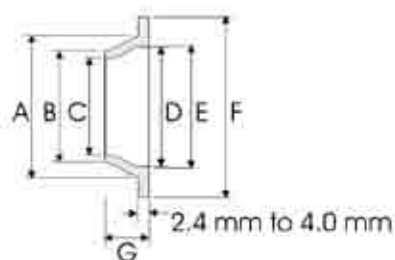
RJT Unions - BS 4825 : Part 5

Welding male part (threaded)



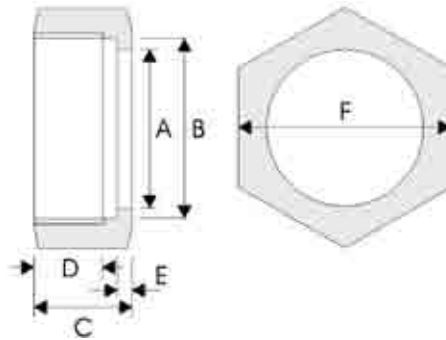
OD	A	B	C	D	E	F	G
mm	mm	mm	mm	mm	mm	mm	mm
25.4	25.65	22.2	25.4	33.3	14.3	21.5	4.8
38.1	38.35	34.9	38.1	46.0	14.3	21.5	4.8
50.8	51.05	47.6	50.8	58.7	14.3	21.5	4.8
63.5	63.75	60.3	63.5	71.4	14.3	21.5	4.8
76.2	76.45	73.0	76.2	84.1	14.3	21.5	4.8
101.6	101.85	97.6	101.6	109.5	14.3	21.5	4.8

Welding liner



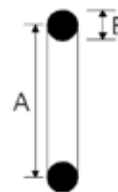
OD	A	B	C	D	E	F	G
mm	mm	mm	mm	mm	mm	mm	mm
25.4	32.5	25.65	22.2	26.2	27.8	41.3	10 or 12.7
38.1	45.2	38.35	34.9	38.9	40.5	54.0	10 or 12.7
50.8	57.9	51.05	47.6	51.6	53.2	66.7	10 or 12.7
63.5	70.6	63.75	60.3	64.3	65.9	79.4	10 or 12.7
76.2	83.3	76.45	73.0	77.0	78.6	92.1	10 or 12.7
101.6	108.5	101.85	97.6	102.4	104	117.5	12.7 or 25.4

Hexagonal nut



OD	A	B	C	D	E	F
mm	mm	mm	mm	mm	mm	mm
25.4	33.3	46.6	22.2	15.1	4.0	50.8
38.1	46.0	59.3	22.2	15.1	4.0	65.0
50.8	58.7	73.6	22.2	15.1	4.0	79.4
63.5	71.4	86.3	22.2	15.1	4.0	92.1
76.2	84.1	99.0	22.2	15.1	4.0	104.8
101.6	109.5	124.4	22.2	15.1	4.0	130.2

Ring joint seals



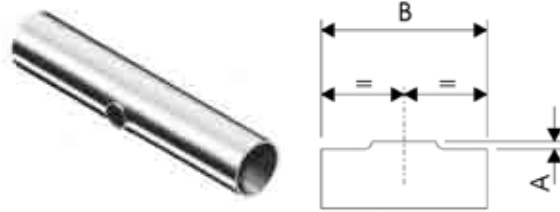
OD	A	B
mm	mm	mm
25.4	33.3	6.6
38.1	46.0	6.6
50.8	58.7	6.6
63.5	71.4	6.6
76.2	84.1	6.6
101.6	109.5	6.6

Hygienics

Additional Hygienic Fittings and Components

This subsection covers additional fittings and components that are compatible with the BS 4825 tube and fittings specifications.

Pulled tees



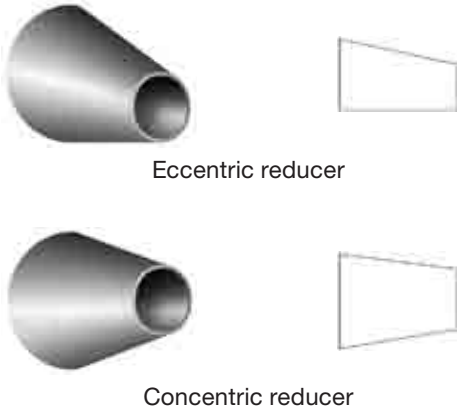
OD	A	B
mm	mm	mm
25.4	2	89
38.1	2	130
50.8	3	178
63.5	3	229
76.2	3	267
101.06	5	348

Reducing tees



OD	A	B	C
mm	mm	mm	mm
38.1 to 25.4	38	25.4	70
50.8 to 25.4	51	25.4	82
50.8 to 38.1	51	38.1	82
63.5 to 38.1	63.5	38.1	105
63.5 to 50.8	63.5	50.8	105
76.2 to 50.8	76	50.8	110
76.2 to 63.5	76	63.5	110

Concentric and eccentric reducers



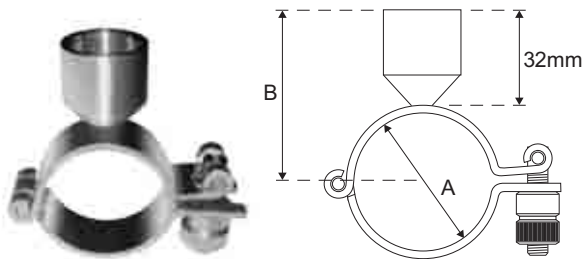
OD mm	Availability	
	Eccentric	Concentric
38.1 to 25.4	✓	✓
50.8 to 38.1	✓	✓
50.8 to 25.4	✓	✓
63.5 to 50.8	✓	✓
63.5 to 38.1	✓	✓
63.5 to 25.4	✓	-
76.2 to 63.5	✓	-
76.2 to 50.8	✓	✓
76.2 to 38.1	✓	✓
76.2 to 25.4	✓	✓
101.6 to 76.2	✓	✓
101.6 to 63.5	✓	-

Notes

- Dimensions are subject to agreement with purchaser

Hinged pipe clip

Two piece hinged pipe clip tightened by an M8 knurled thumb nut and having a BSP threaded boss



OD	A	B
in	mm	m
1/2	12.7	40
3/4	19.0	40
1	25.4	45
1 1/2	38.1	50
2	50.8	60
2 1/2	63.2	65
3	76.2	70
4	101.6	80

Notes

- Dimensions are subject to agreement with purchaser

Hygienics

Specifications - ASTM A270

Seamless and welded austenitic stainless steel sanitary (hygienic) tubing

This specification covers seamless and welded austenitic stainless steel hygienic tubing having special surface finishes.

Dimensions and tolerances

- ◆ **Dimensions.** Tube sizes normally furnished to this specification are ≤4 in (101.6mm) OD.
- ◆ **Cut lengths** shall be no less than specified and not more than 1/8 in (3.2mm) over that specified.

Cross-sectional tolerances

Outside Diameter (OD)		Variations in OD				Variation in t	
		Under		Over		Under	Over
in	mm	in	mm	in	mm	%	%
≤1	≤25.4	0.005	0.13	0.005	0.13	12.5	12.5
>1 to 2	>25.4 to 50.8	0.008	0.20	0.008	0.20	12.5	12.5
>2 to 3	>50.8 to 76.2	0.010	0.25	0.010	0.25	12.5	12.5
>3 to 4	>76.2 to 101.6	0.015	0.38	0.015	0.38	12.5	12.5

Notes

- 1 For t<0.049 in (1.24mm) tolerances to be agreed with purchaser.
- 2 There are no ovality requirements.

Chemical composition

Grade	UNS	Composition Percentage, Max or Range								Note
		Carbon C	Manganese Mn	Phosphorus P	Sulphur S	Silicon Si	Nickel Ni	Chromium Cr	Molybdenum Mo	
TP304	S30400	0.08	2.00	0.045	0.030	1.00	8.00-11.00	18.00-20.00	-	
TP304L	S30403	0.035	2.00	0.045	0.030	1.00	8.00-12.00	18.00-20.00	-	1
TP316	S31600	0.08	2.00	0.045	0.030	1.00	10.00-14.00	16.00-18.00	2.00-3.00	
TP316L	S31603	0.035	2.00	0.045	0.030	1.00	10.00-14.00	16.00-18.00	2.00-3.00	1

Notes

- 1 Carbon 0.040% max is necessary for tubes where many drawing passes are required, as with outside diameter <0.5 in (12.7mm) or nominal wall thickness <0.049 in (1.2mm) (minimum wall thickness <0.044 in (1.12mm))

BS 4825 Part 1 / EN20286 - dimensions and tolerances

- ◆ **O/D Tolerance.** ±0.5% or 0.1mm whichever is the greater.
- ◆ **Wall Thickness Tolerance.** ±12.5%.
- ◆ **Surface Finish.** Internal 1.0Ra Maximum / External 2.5Ra Maximum.
- ◆ **Length.** For lengths up to and including 6 metres +3mm -0mm / For lengths over 6 metres +6mm -0mm.



www.aalco.co.uk

ABERDEEN

Tel 01224 854810
Fax 01224 871982
e-mail aberdeen@aalco.co.uk

AYLESBURY

Tel 01296 461700
Fax 01296 339923
e-mail aylesbury@aalco.co.uk

BELFAST

Tel 02890 838 838
Fax 02890 837 837
e-mail belfast@aalco.co.uk

BIRMINGHAM

Tel 0121 585 3600
Fax 0121 585 6864
e-mail birmingham@aalco.co.uk

CHEPSTOW

Tel 01291 638 638
Fax 01291 638 600
e-mail chepstow@aalco.co.uk

DYFED

Tel 01269 842044
Fax 01269 845276
e-mail dyfed@aalco.co.uk

ESSEX

Tel 01268 884200
Fax 01268 884220
e-mail essex@aalco.co.uk

GLASGOW

Tel 0141 646 3200
Fax 0141 646 3260
e-mail glasgow@aalco.co.uk

HULL

Tel 01482 626262
Fax 01482 626263
e-mail hull@aalco.co.uk

LEEDS

Tel 0113 276 3300
Fax 0113 276 0382
e-mail leeds@aalco.co.uk

LIVERPOOL

Tel 0151 207 3551
Fax 0151 207 2657
e-mail liverpool@aalco.co.uk

MANCHESTER

Tel 01204 863456
Fax 01204 863430
e-mail manchester@aalco.co.uk

NEWCASTLE

Tel 0191 491 1133
Fax 0191 491 1177
e-mail newcastle@aalco.co.uk

NORWICH

Tel 01603 787878
Fax 01603 789999
e-mail norwich@aalco.co.uk

NOTTINGHAM

Tel 0115 988 2600
Fax 0115 988 2636
e-mail nottingham@aalco.co.uk

SOUTHAMPTON

Tel 023 8087 5200
Fax 023 8087 5275
e-mail southampton@aalco.co.uk

STOKE

Tel 01782 375700
Fax 01782 375701
e-mail stoke@aalco.co.uk

SWANLEY

Tel 01322 610900
Fax 01322 610910
e-mail swanley@aalco.co.uk



Also available in Ireland

DUBLIN

Tel +353 1 6298 600
Fax +353 1 6299 200
e-mail: dublin@amari-dublin.com

CORK

Tel +353 21 4310 520
Fax +353 21 4310 519
e-mail: cork@amari-cork.com