

# aalco<sup>®</sup>

Metric Stainless Steel Tube & Fittings



# Specifying Metric Stainless Steel Tube & Fittings has never been more straightforward



Aalco®, the UK's largest independent multi-metals stockholder, offers a complete range of semi-finished products in stainless steel, aluminium, copper, brass, bronze and nickel alloys. The 10,000 item standard stock range is supported by extensive processing facilities as well as bespoke items for particular industries and individual customers.

## Stainless Steel Metric Tubulars Range

A complete range of fittings including elbows, tees, reducers, end caps, collars, backing flanges and clamps is available.

## Advantages

This ID based system brings many advantages including:

- Light weight
- Systems flexibility including ease of alteration
- Fast welding times
- Low consumables usage
- Attractive appearance
- Clean/hygienic/high-tec image
- Low environmental impact
- Recyclability
- Simple fabrication and erection
- Good mechanical properties
- Good ductility
- Low maintenance
- Long service life
- Smooth surface with no coatings or linings

## Grades

A range of grades is available from stock or on fast-track production:

BSEN 1.4307 (304L)

BSEN 1.4404 (316L)

BSEN 1.4432 (316L High Molybdenum)

## Contents

Stainless Steel Metric	<b>Tubes</b>	Page 2
Stainless Steel Metric	<b>Elbows</b>	Page 3
Stainless Steel Metric	<b>Tees</b>	Page 4
Stainless Steel Metric	<b>Reducers</b>	Page 5
Stainless Steel Metric	<b>End Caps</b>	Page 5
Stainless Steel Metric	<b>Collars</b>	Page 6
Stainless Steel Metric	<b>Flanges</b>	Page 6
Stainless Steel Metric	<b>Clamps &amp; Clips</b>	Page 6

Sizes shown throughout are the most popular. Many more are available, please contact your local Aalco branch for details.



Approved for use in public water supplies.



For a copy of the full Aalco catalogue or any other product leaflets please contact your local branch as shown on the back of this brochure.

## Stainless Steel Metric Tube Sizes

Weight per metre (kg) for given Wall Thickness in mm			
DN	OD	1.5mm	2.0mm
15	18	0.620	
15	20	0.695	0.901
20	23	0.808	
20	25	0.883	
25	28	0.995	
25	30	1.070	1.402
25	32	1.146	
32	35	1.258	
32	38	1.371	1.803
32	40		1.903
40	43	1.559	
40	44.5		2.128
50	51	1.859	2.454
50	53	1.934	
50	54		2.604
65	68	2.498	
65	69		3.355
65	70		3.405
75	78	2.870	
80	83	3.061	
80	84		4.107
100	103	3.812	
100	104		5.108
125	128	4.751	
125	129		6.360
150	153	5.690	
150	154		7.612
200	203	7.568	
200	204		10.116
250	254		12.620
300	304		15.214

Weight per metre (kg) for given Wall Thickness in mm					
DN	OD	2.5mm	3.0mm	4.0mm	5.0mm
100	106		7.737		
100	108			10.417	
150	156		11.493		
150	158			15.425	
200	205	12.677			
200	206		15.249		
200	208			20.433	
250	255	15.807			
250	256		19.005		
300	305	18.937			
300	306		22.761		
300	308			30.449	
350	355	22.067			
350	356		26.517		
400	406		30.273		
400	408			40.465	
450	456		34.029		
500	506		37.785		
500	508			50.481	
600	606		45.297		
600	608			60.497	

### Dimensional Tolerances to EN/ISO 1127

#### Outside Diameter (Class D3):

+ or - 0.75% / minimum + or - 0.3mm

#### Outside Diameter for tubes 168.3mm O/D & above (Class D2):

+ or - 1.0% / minimum + or - 0.5mm

#### Wall Thickness (Class T3):

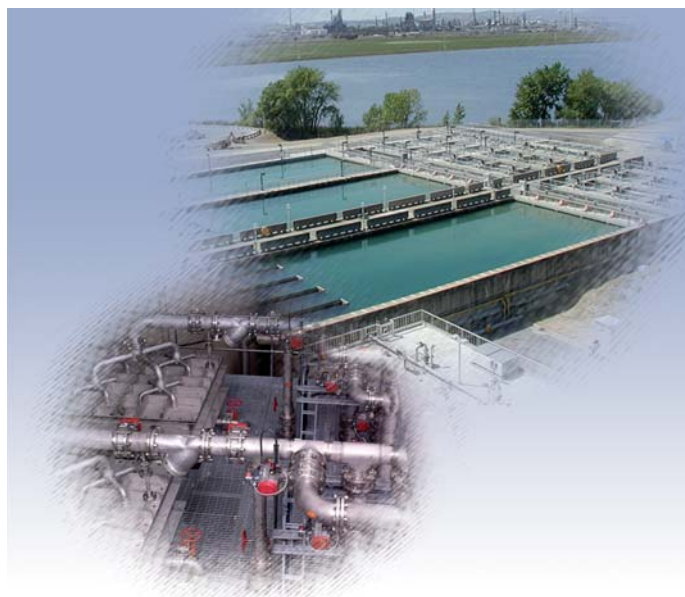
+ or - 10% / minimum + or - 0.15mm

### Lengths

6 meter random lengths with plain ends.

### Finish

Unannealed, Pickled

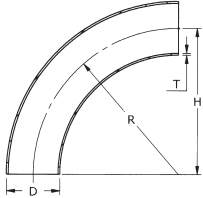


For the complete range of Aalco products please contact your local branch and request a catalogue.

Details on the reverse of this brochure.

## Stainless Steel Metric Elbows

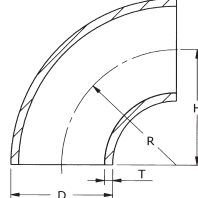
### Welded 45° & 90° Elbows – Radius D+100



Data refers to 90° Bends only.  
45° Bends in sizes below DN200  
are cut from 90°'s

DN (D)	OD	wall (T)	Weight kg
25	30	2	0.27
40	44.5	2	0.46
50	54	2	0.61
65	69	2	0.90
80	84	2	1.16
100	104	2	1.61
100	106	3	2.43
125	129	2	2.25
125	131	3	3.40
150	154	2	2.99
	156	3	4.51
200	204	2	4.77
	205	2.5	5.97
	206	3	7.19
250	254	2	6.94
	255	2.5	8.69
	256	3	10.45
300	304	2	9.52
	305	2.5	11.90
	306	3	14.30
350	355	2.5	15.62
	356	3	18.74
400	406	3	23.78
450	456	3	29.40
500	506	3	35.61
	508	4	47.57
600	606	3	49.90
	608	4	66.52
700	708	4	88.60
	710	5	101.91

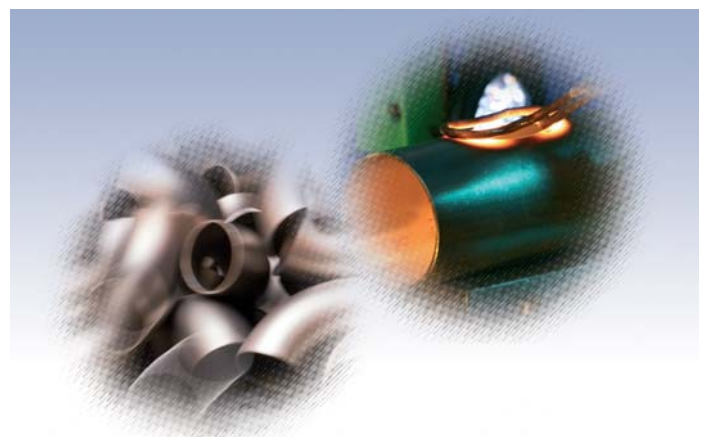
### Welded 45° & 90° Elbows – Radius 1.5D



Data refers to 90° Bends only.  
45° Bends in sizes below DN200  
are cut from 90°'s

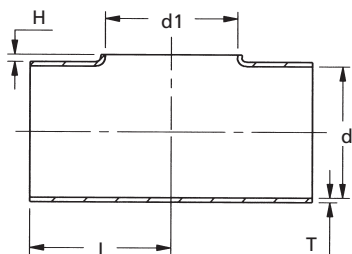
DN (D)	OD	wall (T)	Weight kg
15	18	1.5	0.030
20	23	1.5	0.050
25	28	1.5	0.060
32	38	2	0.140
40	44.5	2	0.220
50	54	2	0.320
65	69	2	0.450
80	84	2	0.770
	86	3	1.180
100	104	2	1.200
	106	3	1.820
125	129	2	1.880
150	154	2	2.690
	156	3	4.060
200	204	2	4.770
	205	2.5	5.970
	206	3	7.190
250	254	2	7.430
	256	3	11.190
300	304	2	10.710
	306	3	16.090
350	356	3	22.500
400	406	3	29.040
	408	4	38.620
450	456	3	36.760
500	506	3	45.400
	508	4	60.420
	510	5	75.370
600	606	3	65.420
	608	4	87.080

45° & 90° Elbows – Radius 3D are also  
available on request.



## Stainless Steel Metric Tees

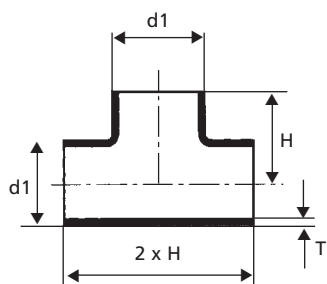
### Pulled Equal Tees



DN	OD	wall (T)	L*	H*	Weight kg
25	28	1.5	28.5	15.5	0.05
32	38	1.5	47.5	20.5	0.13
40	44	2	47.5	24	0.14
50	54	2	57	29	0.22
65	69	2	63.5	38.5	0.37
80	84	2	85.5	45	0.63
100	104	2	105	55	0.95
125	129	2	124	69	1.42
150	154	2	143	84	2.03
200	204	2	178	110	3.80
250	254	2	216	140	5.80
300	306	3	300	168	10.60
350	356	3	350	195	14.40
400	406	3	400	223	22.54

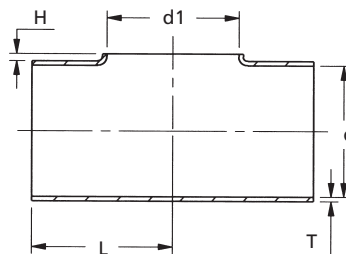
\* Approximate

### Equal Tees with Branch



DN	OD (d1)	T	H	Weight kg
25	28	1.5	28.5	0.07
32	38	1.5	47.5	0.18
32	38	2	47.5	0.24
40	44.5	2	47.5	0.24
50	54	2	57.0	0.34
65	69	2	63.5	0.48
80	84	2	85.5	0.77
100	104	2	105	1.19
125	129	2	124	1.76
150	154	2	143	2.03
200	204	2	178	3.84

### Pulled Reducing Tees



DN1 x DN2	OD1 x OD2	wall (T)	L*	H*	Weight kg
50 25	54 x 28	2	57	29	0.20
50 40	54 x 44	2	57	29	0.20
65 40	69 x 44	2	63.5	38	0.35
65 50	69 x 54	2	63.5	38	0.35
80 40	84 x 44	2	85.5	45	0.60
80 50	84 x 54	2	85.5	45	0.60
80 65	84 x 69	2	85.5	45	0.60
100 50	104 x 54	2	105	55	0.90
100 65	104 x 69	2	105	55	0.90
100 80	104 x 84	2	105	55	0.90
125 80	129 x 84	2	124	69	1.30
125 100	129 x 84	2	124	69	1.30
150 80	154 x 84	2	143	84	1.90
150 100	154 x 104	2	143	84	1.90
150 125	154 x 129	2	143	84	1.90
200 100	204 x 104	2	178	110	3.60
200 125	204 x 129	2	178	110	3.60
200 150	204 x 154	2	178	110	3.60
250 150	254 x 154	2	216	140	5.50
250 200	254 x 204	2	216	140	5.50
300 200	306 x 206	3	300	165	10.30

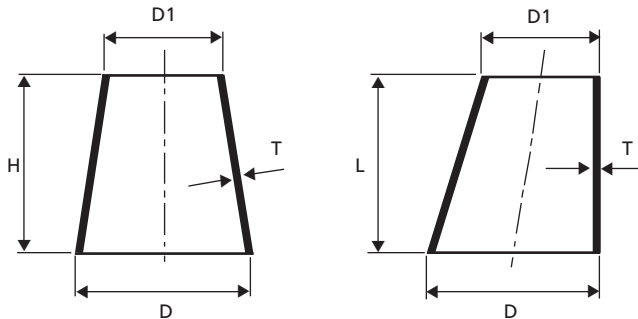
\* Approximate

Sizes shown throughout are the most popular.

Many more are available, please contact your local Aalco branch for details.

## Stainless Steel Metric Reducers

### Concentric and Eccentric Reducers



DN1 x DN2	OD1 x OD2	wall (T)	Length	Weight kg
-----------	-----------	----------	--------	-----------

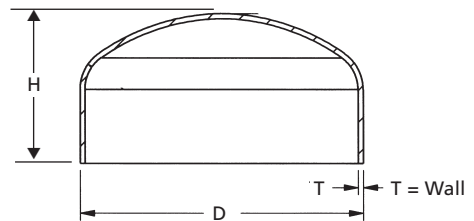
25 x 20	28 x 23	1.5	25	0.024
30 x 25	33 x 28	1.5	30	0.034
40 x 25	43 x 28	1.5	40	0.054
	25 44 x 29	2	40	0.073
50 x 25	54 x 29	2	50	0.104
	x 40 54 x 44	2	50	0.123
65 x 40	69 x 44	2	65	0.185
	x 50 69 x 54	2	65	0.201
80 x 40	84 x 44	2	80	0.257
	x 50 84 x 54	2	80	0.277
	x 65 84 x 69	2	80	0.307
100 x 50	104 x 54	2	100	0.397
	x 65 104 x 69	2	100	0.44
	x 80 104 x 84	2	100	0.472
125 x 50	129 x 54	2	125	0.575
	x 80 129 x 84	2	125	0.669
	x 100 129 x 104	2	125	0.732
150 x 80	154 x 84	2	150	0.897
	x 100 154 x 104	2	150	0.98
	100 156 x 106	3	150	1.49
	x 125 154 x 129	2	150	1.07
200 x 100	204 x 104	2	200	1.55
	x 125 204 x 129	2	200	1.67
	x 150 204 x 154	2	200	1.80
250 x 125	254 x 129	2	250	2.41
	x 150 254 x 154	2	250	2.56
	x 200 254 x 204	2	250	2.88
	200 255 x 205	2.5	250	3.59
	200 256 x 206	3	250	4.35
300 x 200	304 x 204	2	300	3.83
	200 306 x 206	3	300	3.85
	x 250 304 x 254	2	300	4.21
	250 306 x 256	3	300	6.35
350 x 200	356 x 206	3	350	7.41
	x 250 356 x 256	3	350	8.07
	x 300 356 x 306	3	350	8.73

DN1 x DN2	OD1 x OD2	wall (T)	Length	Weight kg
-----------	-----------	----------	--------	-----------

400 x 200	406 x 206	3	400	9.22
	x 250 406 x 256	3	400	9.98
	x 300 406 x 306	3	400	10.73
	x 350 406 x 356	3	400	11.49
450 x 300	456 x 306	3	450	12.92
	x 350 456 x 356	3	450	13.77
	x 400 456 x 406	3	450	14.62
500 x 300	506 x 306	3	500	15.30
	x 350 506 x 356	3	500	16.24
	x 400 506 x 406	3	500	17.18
	x 450 506 x 456	3	500	18.12
600 x 400	606 x 406	3	600	22.88
	x 450 606 x 456	3	600	24.01
	x 500 606 x 506	3	600	25.14

## Stainless Steel Metric End Caps

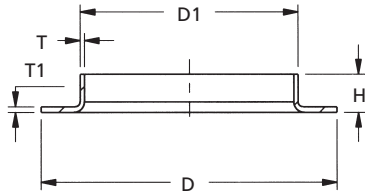
### Pressed End Caps



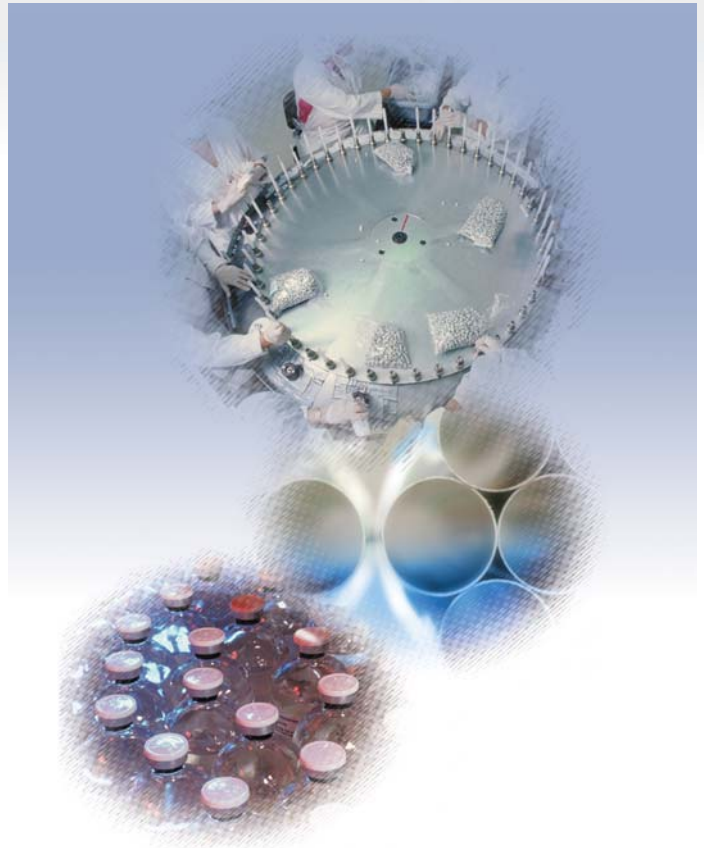
DN	OD (D)	Wall (T)	Height (H)	Weight kg
----	--------	----------	------------	-----------

25	28	1.5	12	0.02
30	33	2	12	0.03
32	38	2	15	0.03
40	44.5	2	16	0.04
50	54	2	19	0.06
80	84	2	23	0.13
100	104	2	24	0.19
125	129	2	34	0.31
150	154	2	41	0.44
200	206	3	50	1.13
250	256	3	55	1.62
300	306	3	70	2.47
350	356	3	89	3.52
400	406	3	98	4.52
450	458	4	108	5.5
500	508	4	120	6.6
600	608	4	140	9.2

## Stainless Steel Metric Pressed Collars



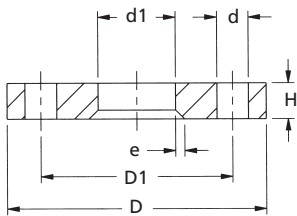
DN	D1 x T x H	T1	D	Weight kg
15	20 x 1.5 x 7	1.5	51	0.04
20	25 x 1.5 x 7	1.5	58	0.04
25	30 x 1.5 x 8	1.5	68	0.05
32	38 x 2 x 10	2	78	0.06
40	44.5 x 2 x 10	2	88	0.09
50	54 x 2 x 12	2	102	0.11
65	69 x 2 x 12	2	122	0.15
80	84 x 2 x 13	2	138	0.19
100	104 x 2 x 16	2	158	0.24
	106 x 3 x 16	3	158	0.36
125	129 x 2 x 15	2	188	0.31
	131 x 3 x 20	3	188	0.47
150	154 x 2 x 19	2	212	0.38
	156 x 3 x 20	3	212	0.57
200	204 x 2 x 21	2	268	0.54
	206 x 3 x 25	3	268	0.82
250	256 x 3 x 25	3	320	1.07
300	306 x 3 x 21	3	370	1.21



## Clamps and Clips

A range of tube Clamps and Clips is available in Grade 1.4404 (316L) Stainless Steel as well as Zinc Plated Mild Steel.

## Metric Flanges



Mild steel Zinc Plated and Passivated with drilling dimensions to BS4504 PN10 Reduced Thickness (Unipipe)

Other types of backing flanges are also available including Epoxy Coated Aluminium and Pressed Stainless Steel types.

DN	Flange OD D	Bolt Hole PCD D1	No of Bolt Holes	Bolt Hole Dia d	Flange ID d1	Flange thk H	Flange W kgs/pc
25	115	85	4	14	35	10	0.6
32	140	100	4	18	42	10	1.0
40	150	110	4	18	50	10	1.2
50	165	125	4	18	60	10	1.4
65	185	145	4	18	75	10	1.7
80	200	160	8	18	90	10	1.8
100	220	180	8	18	110	10	1.9
125	250	210	8	18	136	12	3.1
150	285	240	8	22	161	12	3.8
200	340	295	8	22	213	12	4.9
250	395	350	12	22	262	16	8.0
300	445	400	12	22	313	19	11.0
350	505	460	16	22	364	22	15.5
400	565	515	16	26	418	22	18.1
450	615	565	20	26	470	25	22.1
500	670	620	20	26	520	28	25.4
600	780	725	20	29	630	31	30.0

**ABERDEEN**

Unit 9B, Peterseat Drive  
Peterseat Park, Altens AB12 3HT  
Tel: 01224 854810  
Fax: 01224 871982  
e-mail: aberdeen@aalco.co.uk

**BELFAST**

The Belfast Metal Centre  
20 McKinney Road  
Newtownabbey  
County Antrim BT36 4PE  
Tel: 02890 838 838  
Fax: 02890 837 837  
e-mail: belfast@aalco.co.uk

**BIRMINGHAM**

Shelah Road, Halesowen  
West Midlands B63 3PH  
Tel: 0121 585 3600  
Fax: 0121 585 6864  
e-mail: birmingham@aalco.co.uk

**CHEPSTOW**

Avenue West  
Newhouse Park Estate, Chepstow  
Monmouthshire NP16 6UD  
Tel: 01291 638 638  
Fax: 01291 638 600  
e-mail: chepstow@aalco.co.uk

**DYFED**

Units 3-4  
Capel Hendre Industrial Estate  
Ammanford  
Carmarthenshire SA18 3SJ  
Tel: 01269 842044  
Fax: 01269 845276  
e-mail: dyfed@aalco.co.uk

**GLASGOW**

117 Clydesmill Place  
Cambuslang Investment Park  
Glasgow G32 8RF  
Tel: 0141 646 3200  
Fax: 0141 646 3260  
e-mail: glasgow@aalco.co.uk

**HULL**

Saxon Way  
Priory Park West, Hessele  
Hull HU13 9PB  
Tel: 01482 626262  
Fax: 01482 626263  
e-mail: hull@aalco.co.uk

**LEEDS**

Unit 1, Revie Road  
off Elland Road  
Leeds LS11 8JG  
Tel: 0113 276 3300  
Fax: 0113 276 0382  
e-mail: leeds@aalco.co.uk

**LIVERPOOL**

207 Great Howard Street  
Liverpool L5 9ZH  
Tel: 0151 207 3551  
Fax: 0151 207 2657  
e-mail: liverpool@aalco.co.uk

**MANCHESTER**

Express Trading Estate  
Stone Hill Road, Farnworth  
Bolton BL4 9NN  
Tel: 01204 863456  
Fax: 01204 863430  
e-mail: manchester@aalco.co.uk

**NEWCASTLE**

First Avenue  
Team Valley Trading Estate  
Gateshead  
Tyne & Wear NE11 0NU  
Tel: 0191 491 1133  
Fax: 0191 491 1177  
e-mail: newcastle@aalco.co.uk

**NORWICH**

Roundtree Way  
Mousehold Lane  
Norwich NR7 8SR  
Tel: 01603 787878  
Fax: 01603 789999  
e-mail: norwich@aalco.co.uk

**NOTTINGHAM**

Harrimans Lane  
Dunkirk  
Nottingham NG7 2SD  
Tel: 0115 988 2600  
Fax: 0115 988 2636  
e-mail: nottingham@aalco.co.uk

**PLYMOUTH**

Unit 1, Kestrel Park  
Burrington Way  
Plymouth PL5 3LT  
Tel: 01752 770877  
Fax: 01753 770844  
e-mail: plymouth@aalco.co.uk

**SLOUGH**

Unit 2, 552 Fairlie Road  
Slough Trading Estate  
Slough  
Berkshire SL1 4PY  
Tel: 01753 619900  
Fax: 01753 512227  
e-mail: slough@aalco.co.uk

**SOUTHAMPTON**

Test Lane  
Nursling  
Southampton SO16 9TA  
Tel: 02380 875200  
Fax: 02380 875275  
e-mail: southampton@aalco.co.uk

**STOKE**

Unit F, Forge Way  
Brown Lees Industrial Estate  
Biddulph  
Stoke-on-Trent ST8 7DN  
Tel: 01782 375700  
Fax: 01782 375701  
e-mail: stoke@aalco.co.uk

**SWANLEY**

Units 6 & 7  
The Interchange  
Wested Lane  
Swanley  
Kent BR8 8TE  
Tel: 01322 610900  
Fax: 01322 610910  
e-mail: swanley@aalco.co.uk



Also available in Ireland

**DUBLIN**

Tel: +353 (0) 1 629 8600  
Fax: +353 (0) 1 629 9200  
e-mail: dublin@amari-dublin.com

**CORK**

Tel: +353 (0) 21 431 6750/2  
Fax: +353 (0) 21 431 6753  
e-mail: cork@amari-cork.com

**aalco**<sup>®</sup>  
**www.aalco.co.uk**

*The information contained herein is based on our present knowledge and experience and is given in good faith. However, no liability will be accepted by the Company in respect of any action taken by any third party in reliance thereon.*

*As the products detailed herein may be used for a wide variety of purposes and as the Company has no control over their use, the Company specifically excludes all conditions or warranties expressed or implied by statute or otherwise as to dimensions, properties and/or their fitness for any particular purpose. Any advice given by the Company to any third party is given for that party's assistance only and without any liability on the part of the Company.*

*Any contract between the Company and a customer will be subject to the Company's Conditions of Sale.*

*The extent of the Company's liabilities to any customer is clearly set out in those Conditions; a copy of which is available on request.*

**WEIGHTS**

All weights shown in this publication are for guidance only. They are calculated using nominal dimensions and scientifically recognised densities. Please note that in practice, the actual weight can vary significantly from the theoretical weight due to variations in manufacturing tolerances and compositions.