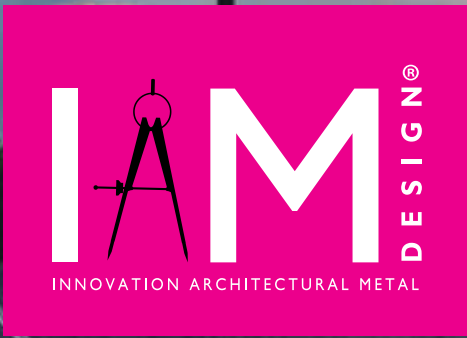


Uniclass	L4421
CI/SfB	(34) X



aalco®

Tube and Bar

Glass Clamps

Da Vinci Clamp System

Fittings

Mountings

End Caps

Handrail Brackets

Slotted Tube System

GLASS U

LED Railing System

Post LED System

Rope System

Mirror Polished System

Accessories



Stainless Steel Handrail Systems

This catalogue contains details of the range of handrail products available from Aalco. Extensive UK stocks are backed by a bigger range held by the manufacturer, IAM Design. All items are available on very short lead times. If you cannot find what you are looking for, please contact your local Aalco Service Centre (details on the back cover) or visit the Aalco website.

Please note: Satin Polish finish is not suitable for use outside in coastal locations nor for swimming pools - either indoors or outside. For these types of application, items should be selected from the Grade 316 Mirror Polished finish range.

Issue 16 May 2015

Information contained within this catalogue is based on our present knowledge and experience and is given in good faith. However, no liability will be accepted by the Company in respect of any action taken by any third party in reliance thereon.

As products may be used for a wide variety of purposes over which it has no control, the Company specifically excludes all conditions or warranties expressed or implied by statute or otherwise as to dimensions, properties and/or their fitness for any particular purpose. Any advice given by the Company to any third party is given for that party's assistance only and without any liability on the part of the Company.

Any contract between the Company and a customer will be subject to the Company's Conditions of Sale. The extent of the Company's liabilities to any customer is clearly set out in those conditions, a copy of which is available upon request.

	Page
Tube and Bar	3
Glass Clamps	4 - 10
Da Vinci Clamp System	11 - 13
Fittings	14 - 16
Mountings	17 - 18
End Caps	19
Handrail Brackets	20 - 24
Slotted Tube System	25 - 26
Glass U	27 - 36
LED Railing System	37 - 42
Post LED System	43 - 44
Rope System	45 - 49
Mirror Polished System	50 - 58
Accessories	59
Index of Products	60 - 70



HANDRAIL TUBE

Aalco stocks the following items with a satin 240 Grit or 320 Grit polished O/D: (See Slotted Tube also on page 25.)

Grade			
AISI 304 (1.4301)		316 (1.4404)	
O/D	Wall	O/D	Wall
42.4mm	2.0mm	42.4mm	2.0mm
42.4mm	2.5mm	42.4mm	2.5mm
48.3mm	2.0mm	48.3mm	2.0mm
48.3mm	2.5mm	48.3mm	2.5mm

320 GRIT SATIN POLISHED BAR

Grade		Diameter
AISI 304 (1.4301)	AISI 316 (1.4404)	12mm

MIRROR POLISHED TUBES



Dimensions	Grade	Weight/Metre
Ø 42.4 x 2.0mm	AISI 316	2.05 kg

MIRROR POLISHED ROUND BARS



Diameter	Grade	Weight/Metre
Ø 12mm	AISI 316	0.90 kg



IAM Design's glass clamps are available in a large range of different sizes and shapes, allowing the user to choose between different designs and purposes. The glass clamps are supplied with the correct rubber inserts - appropriate for the specified thickness of glass.

Being modular, the system allows the mixing of components in order to obtain the most suitable combination for each project. The coding system for the components reflects this modularity, making it easy to identify the different features of the glass clamps.

E 1 12 042 06

Finishing	Material	Model	Anchorage Surface	Glass Thickness
E Satin Finish	1 AISI 304	12 45 x 63 x 28mm Round	000 Flat	06 6.0mm
X Mirror Polished	2 AISI 316	14 45 x 63 x 30mm Round	033 33.7 mm Dia Tube	07 6.76mm
		15 55 x 55 x 35mm Square	042 42.4 mm Dia Tube	08 8.0mm
			048 48.3 mm Dia Tube	09 8.76mm
			050 50.8 mm Dia Tube	10 10.0mm
				11 10.76mm
				44 9.52mm
				12 12.0mm
				13 12.76mm
				15 15.0mm
				17 16.76mm
				18 17.52mm

Please note: Satin Polish finish is not suitable for use outside in coastal locations nor for swimming pools - either indoors or outside. For these types of application, items should be selected from the Grade 316 Mirror Polished finish range - see pages 50-58. All Glass Clamps are also available in Mirror Polished finish. The part number for these are as on pages 6 and 7, but replacing the 'E' with an 'X'. For example the Mirror Polished finish option of part E11204206 has the reference number X11204206.

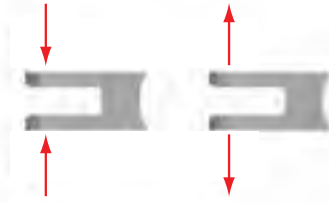
More secure from now on!

IAM Design has tested and certified a large number of glass clamps including the Da Vinci Clamp System. The company has obtained TUV's approval and certification. TUV is known worldwide as one of the most demanding agencies for quality control. Approval was gained according to DIN/EN 12600 safety standards.



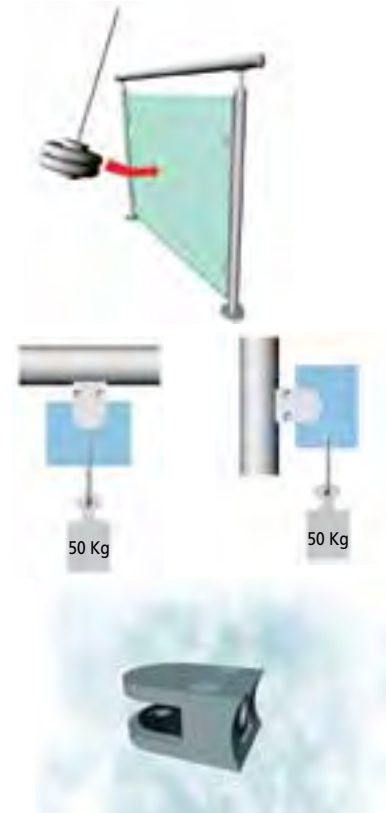
HORIZONTAL PRESSURE RESISTANCE

This test verifies the possibility of deformation or breakage due to the application of a 3.5 kN load for the duration of one minute. The test is carried out with the force applied at a single point - which is more likely to result in the failure of the object being tested. The force is applied via a calibrated press that registers the applied load. All the clamps tested at TUV Italia s.r.l.'s laboratories passed the compression tests with no sign of deformation or fracture.



IMPACT RESISTANCE

This test consists of striking a piece of glass supported by four clamps with a 50kg weight, hitting it at its most critical point. The pendulum carrying the weight must have a length of 1.5m and must cover a movement of 30° from its point of release to the point of impact with the glass.



TRACTION RESISTANCE

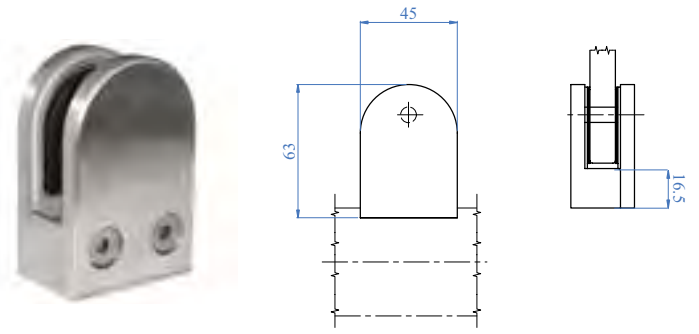
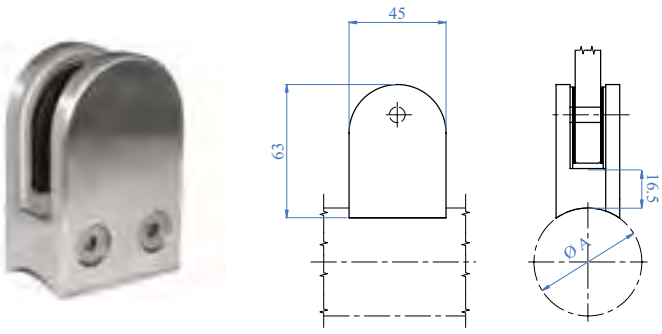
The test consists of applying a 500 N (50kg) load for five minutes to a sheet of glass held by a clamp. At the end of the test, there must be no movement, deformation or fracture.

CORROSION RESISTANCE

To carry out this test according to ISO 9227:2006, the products are put inside a saline fog room. A 5% solution of salt (NaCl) with a pH level between 6.5 and 7.2 is nebulised within the room at a constant temperature of +35°C.

The test lasts for a duration of 120 hours.



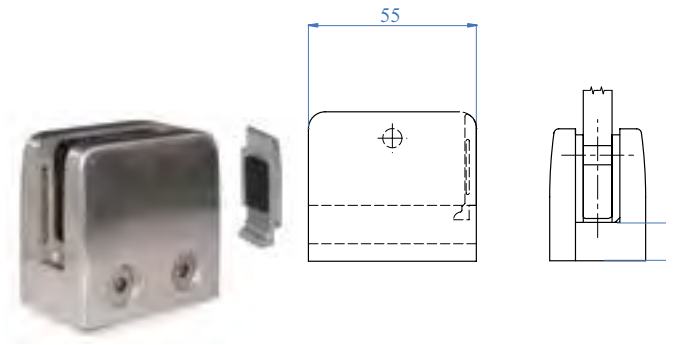
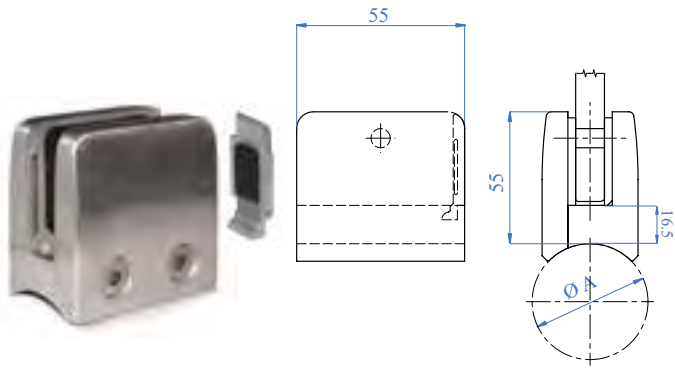


Part No.		Application Ø A	Glass Thickness
AISI 304	AISI 316		
E11204206	E21204206	For tube Ø A 42.4mm	6.0mm
E11204207	E21204207	For tube Ø A 42.4mm	6.76mm
E11204208	E21204208	For tube Ø A 42.4mm	8.0mm
E11204209	E21204209	For tube Ø A 42.4mm	8.76mm
E11204244	E21204244	For tube Ø A 42.4mm	9.52mm
E11204210	E21204210	For tube Ø A 42.4mm	10.0mm
E11404213	E21404213	For tube Ø A 42.4mm	12.76mm
E11204806	E21204806	For tube Ø A 48.3mm	6.0mm
E11204807	E21204807	For tube Ø A 48.3mm	6.76mm
E11204808	E21204808	For tube Ø A 48.3mm	8.0mm
E11204809	E21204809	For tube Ø A 48.3mm	8.76mm
E11204844	E21204844	For tube Ø A 48.3mm	9.52mm
E11204810	E21204810	For tube Ø A 48.3mm	10.0mm
E11404813	E21404813	For tube Ø A 48.3mm	12.76mm

Part No.		Application	Glass Thickness
AISI 304	AISI 316		
E11200006	E21200006	Flat back	6.0mm
E11200007	E21200007	Flat back	6.76mm
E11200008	E21200008	Flat back	8.0mm
E11200009	E21200009	Flat back	8.76mm
E11200044	E21200044	Flat back	9.52mm
E11200010	E21200010	Flat back	10.0mm
E11400013	E21400013	Flat back	12.76mm

All the above items are also available with a Mirror Polished finish in Grade 316. The product code is as shown but with the initial 'E' replaced by an 'X'.





Part No.		Application Ø A	Glass Thickness
AISI 304	AISI 316		
E11504210	E21504210	For tube Ø A 42.4mm	10.0mm
E11504211	E21504211	For tube Ø A 42.4mm	10.76mm
E11504212	E21504212	For tube Ø A 42.4mm	12.0mm
E11504213	E21504213	For tube Ø A 42.4mm	12.76mm
E11504810	E21504810	For tube Ø A 48.3mm	10.0mm
E11504811	E21504811	For tube Ø A 48.3mm	10.76mm
E11504812	E21504812	For tube Ø A 48.3mm	12.0mm
E11504813	E21504813	For tube Ø A 48.3mm	12.76mm

Part No.		Application	Glass Thickness
AISI 304	AISI 316		
E11500010	E21500010	Flat back	10.0mm
E11500011	E21500011	Flat back	10.76mm
E11500012	E21500012	Flat back	12.0mm
E11500013	E21500013	Flat back	12.76mm

All the above items are also available with a Mirror Polished finish in Grade 316. The product code is as shown but with the initial 'E' replaced by an 'X'.

MIRROR POLISHED FINISH GLASS CLAMPS



X11104206



X11104210



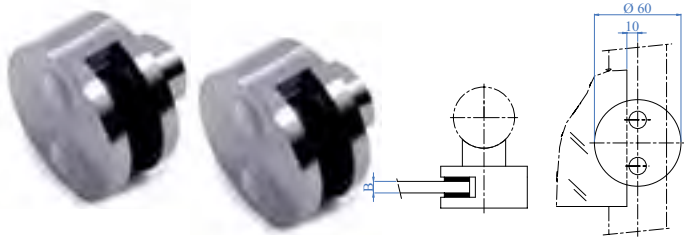
X11204206



X11204210

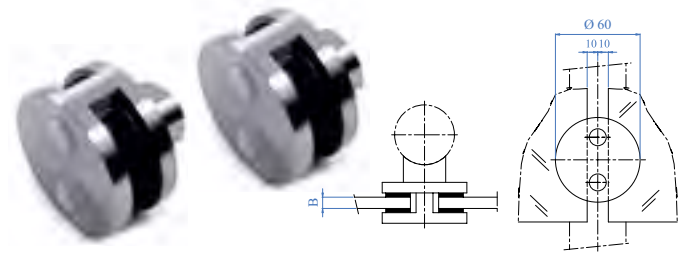
See pages 50 - 58 for full range of Mirror Polished items

ROUND CLAMPS FOR 1 PIECE GLASS



Part No.		Application	Glass Thickness B
AISI 304	AISI 316		
E00830	E00830316	For tube Ø 42.4mm	8.0mm
E00831	E00831316	Flat back	8.0mm

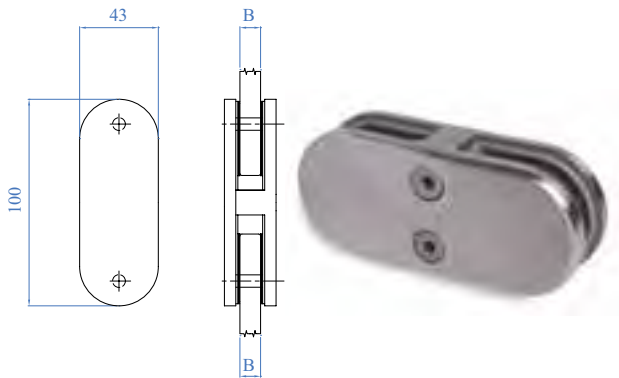
ROUND CLAMPS FOR 2 PIECE GLASS



Part No.		Application	Glass Thickness B
AISI 304	AISI 316		
E00820	E00820316	For tube Ø 42.4mm	8.0mm
E00821	E00821316	Flat back	8.0mm

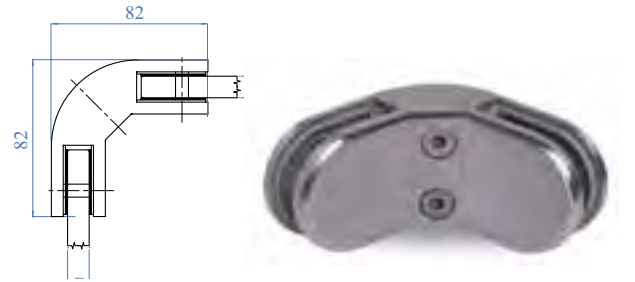
Clamps also suitable for other glass thicknesses with use of Rubber Inserts shown on Page 12.

SELF-SUPPORTING GLASS CLAMPS



Part No.	Glass Thickness B
AISI 316	
E00995	8.0, 8.76 & 10.0mm

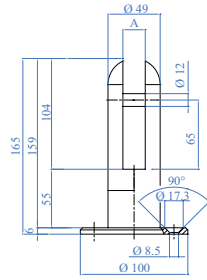
SELF-SUPPORTING GLASS CLAMPS



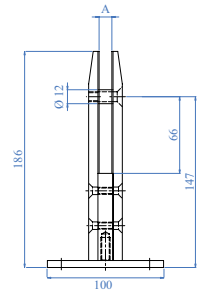
Part No.	Glass Thickness B
AISI 316	
E00996	8.0, 8.76 & 10.0mm



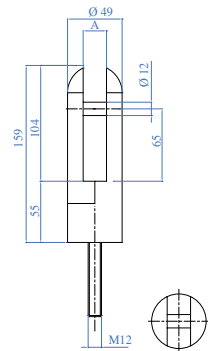
GLASS CLAMP FOR GROUND ANCHORAGE



Part No.		Glass Thickness A
AISI 304	AISI 316	
E2000500	E2000600	12.0 & 17.52mm

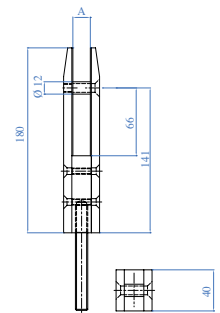


Part No.		Glass Thickness A
AISI 304	AISI 316	
E2100500	E2100600	12.0 & 17.52mm



Part No.		Glass Thickness A
AISI 304	AISI 316	
E2000100	E2000200	12.0 & 17.52mm

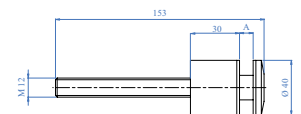
2 pieces: anchor flange Ø 100 mm and 3 countersunk holes and holder for 159 mm high glass



Part No.		Glass Thickness A
AISI 304	AISI 316	
E2100100	E2100200	12.0 & 17.52mm

2 pieces: square anchor flange Ø 100 mm with 4 holes and glass clamp with and holder for 180 mm high glass

WALL GLASS CLAMP



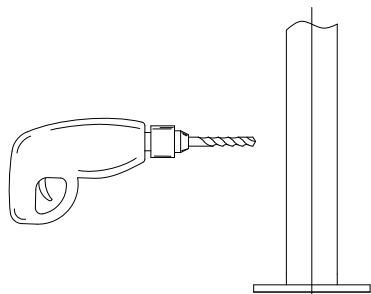
Part No.		Glass Thickness A
AISI 304	AISI 316	
E2200100	E2200200	8 & 12.76mm
E2200300	E2200400	16.76 & 21.52mm

Round support complete with threaded screw and glass attachment

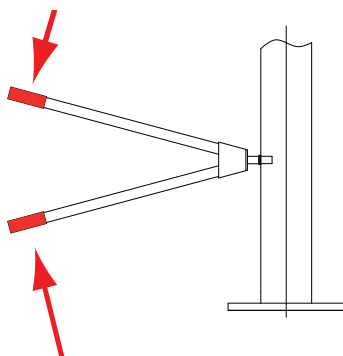


GLASS CLAMP INSTALLATION

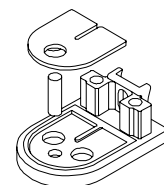
- ① Drill a 11mm hole in the tube



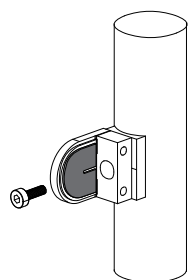
- ② Use a riveting tool with a M8 rivet



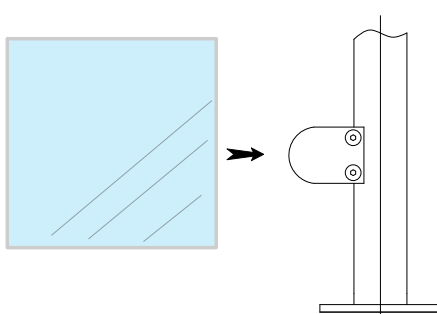
- ③ Place rubbers of the required thickness within the clamp



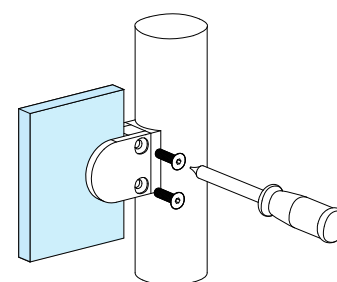
- ④ Fix the support to the tube using a M8 screw



- ⑤ Position the glass against the support



- ⑥ Fix the support to the clamp with a M6 screw

**WARNING**

Please retain this book - particularly the installation manual. Please read the instruction manual carefully before assembly and installation. Do not forget to act always in accordance with the laws of the intended country of installation. In special cases, please check local and national construction rules (For example: in Germany DIN 18065 and the related law: Bauo Bauordnungrechtes). Install each item as indicated in the relevant installation manual. Do not install or use the item if you have doubts concerning its installation. Do not use or install the product if you are missing any components. In such cases, please contact your local dealer or the manufacturer IAM Design.

REGULAR MAINTENANCE AND INSPECTION

Installation should be carried out by skilled fitters, following the instructions on the technical sheets supplied by IAM Design. Maintenance and regular inspections are necessary to maintain perfect functionality and efficiency. Again, inspections and maintenance operations should only be carried out by competent and skilled workers. Employment of fitters approved by the manufacturer is highly recommended. Otherwise IAM Design refuses all responsibility.

CLEANING

The use of stainless steel metallic parts guarantees resistance to different atmospheric conditions. Do not use acids, alkaline solutions or aggressive, abrasive or corrosive agents to clean the handrail system.

DA VINCI CLAMP SYSTEM



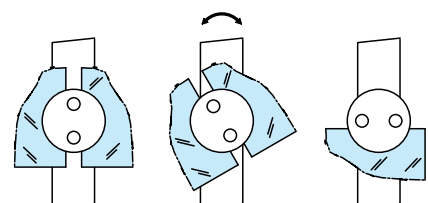
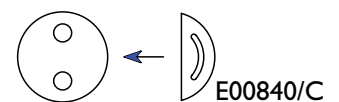
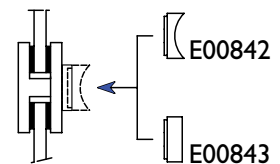
1
INNOVATIVE
GLASS CLAMP

MANY
WAYS
TO USE

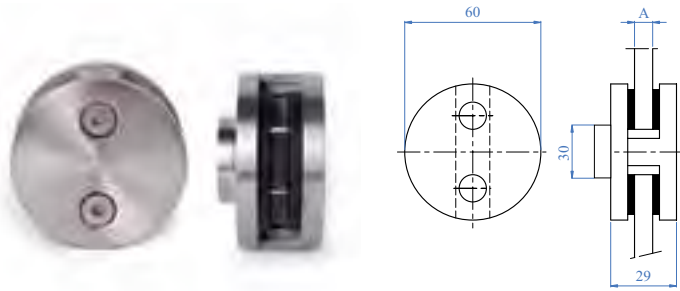


WHY IS IT INNOVATIVE?

- The interchangeable clamp can be used with almost any tube
- Lateral locking permits use as a single support for glazing panel
- The movable clamp permits rotation of the glass around mounted post



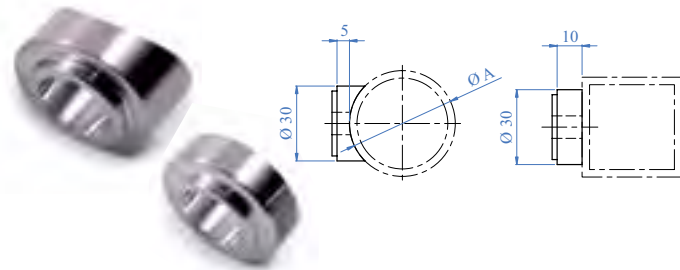
ROUND CLAMPS



Part No.	Dimension	Glass Thickness A
AISI 316		
E00840	60mm	8.0mm

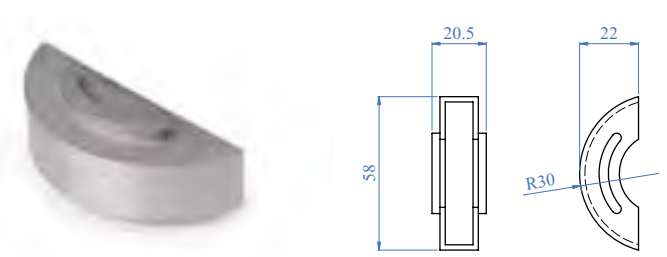
For Mirror Polished finish option, please see page 51.

ADAPTOR FOR ROUND CLAMPS



Part No.	Application Ø A
AISI 316	
E00842	For tube Ø A 42.4mm
E00843	Flat back
E00844	For tube Ø A 48.3mm

STAINLESS STEEL CLOSURE FOR ROUND CLAMPS



Part No.
AISI 316
E00840/C

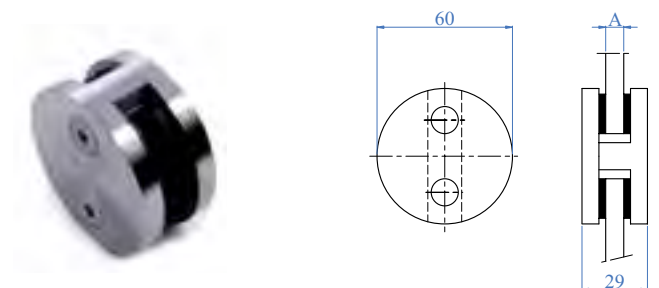
RUBBER FOR ROUND GLASS CLAMPS



Part No.	No. of pieces in set	Glass Thickness
RUBBER		
E00840/R1	2	8.76mm
E00840/R2	2	10.0mm
E00840/R3	2	10.76mm
E00840/R4	2	12.0mm
E00840/R5	2	12.76mm

These inserts can also be used with the Round Glass Clamps shown on page 8.

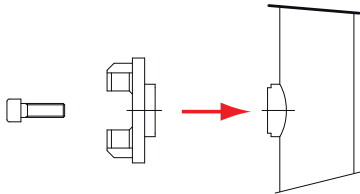
SELF SUPPORTING GLASS CLAMP



Part No.	Dimension	Glass Thickness A
AISI 316		
E00997	60mm	8.0mm

DA VINCI GLASS CLAMP SYSTEM INSTALLATION - Assembly instruction according to the certification

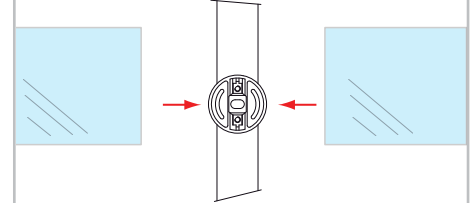
① Fit the adapter and the back part of the "Da Vinci Clamp" to the tube with an M6 screw



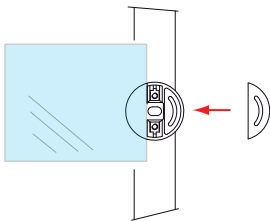
② Put the rubbers in the appropriate position



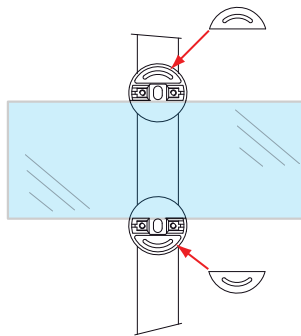
③ Insert the 2 glasses in the vertically aligned clamp



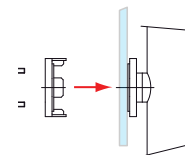
④ If the glass is needed one side only, put an E00840/C fitting in the opposite side



⑤ For a more secure railing, rotate horizontally the supports and insert the glasses between them. Close the unused side of the support using an E00840/C fitting



⑥ Fix the support positively in place



WARNINGS

Please retain this book - particularly the installation manual. Please read the instruction manual carefully before assembly and installation. Do not forget to act always in accordance with the laws of the intended country of installation. In special cases, please check local and national construction rules (For example: in Germany DIN 18065 and the related law: Bauo Bauordnungrechtes). Install each item as indicated in the relevant installation manual. Do not install or use the item if you have doubts concerning its installation. Do not use or install the product if you are missing any components. In such cases, please contact your local dealer or the manufacturer IAM Design.

REGULAR MAINTENANCE AND INSPECTION

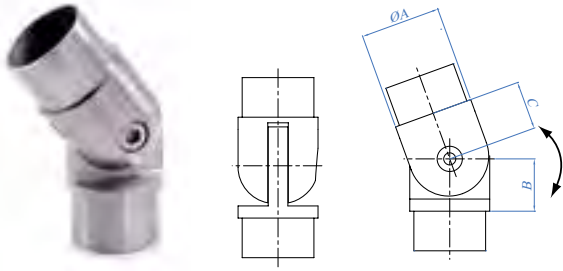
Installation should be carried out by skilled fitters, following the instructions on the technical sheets supplied by IAM Design. Maintenance and regular inspections are necessary to maintain perfect functionality and efficiency. Again, inspections and maintenance operations should only be carried out by competent and skilled workers. Employment of fitters approved by the manufacturer is highly recommended. Otherwise IAM Design refuses all responsibility.

CLEANING

The use of stainless steel metallic parts guarantees resistance to different atmospheric conditions. Do not use acids, alkaline solutions or aggressive, abrasive or corrosive agents to clean the handrail system.

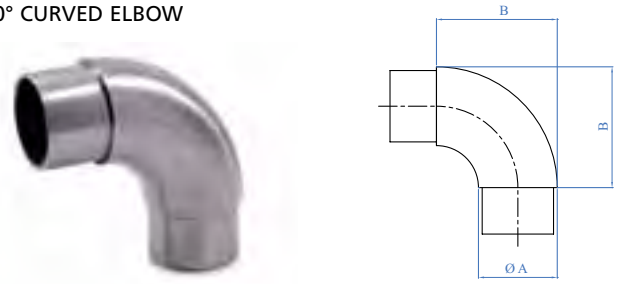


ADJUSTABLE ELBOW



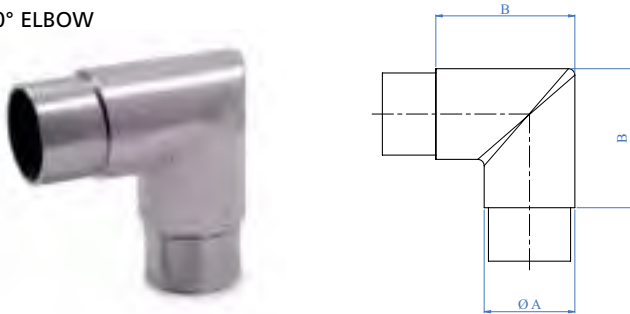
Part No.	Application Ø A	Dimension
AISI 316		
E446	For tube Ø A 42.4 x 2.0mm	B=27.5mm C=26mm
E4461	For tube Ø A 42.4 x 2.5mm	B=27.5mm C=26mm
E4462	For tube Ø A 48.3 x 2.0mm	B=31.5mm C=28mm
E4463	For tube Ø A 48.3 x 2.5mm	B=31.5mm C=28mm

90° CURVED ELBOW



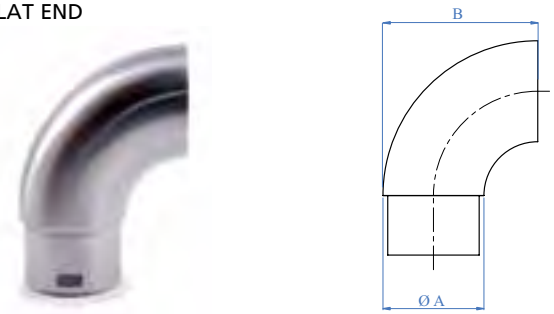
Part No.		Application Ø A	Dimension
AISI 304	AISI 316		
E450/304	E450	For tube Ø A 42.4 x 2.0mm	B = 65mm
-	E450/26	For tube Ø A 42.4 x 2.5mm	B = 65mm
-	E2002	For tube Ø A 48.3 x 2.0mm	B = 73mm
-	E2002/26	For tube Ø A 48.3 x 2.5mm	B = 73mm

90° ELBOW



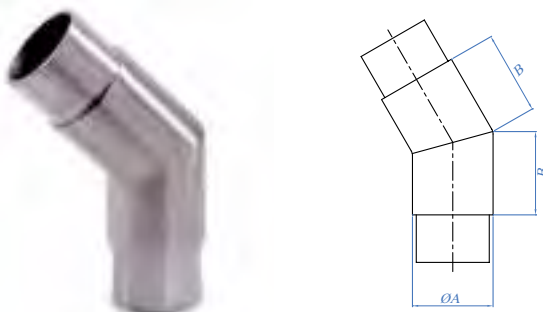
Part No.		Application Ø A	Dimension
AISI 304	AISI 316		
E451/304	E451	For tube Ø A 42.4 x 2.0mm	B = 65mm
-	E451/26	For tube Ø A 42.4 x 2.5mm	B = 65mm
-	E2012	For tube Ø A 48.3 x 2.0mm	B = 67mm
-	E2012/26	For tube Ø A 48.3 x 2.5mm	B = 67mm

90° FLAT END



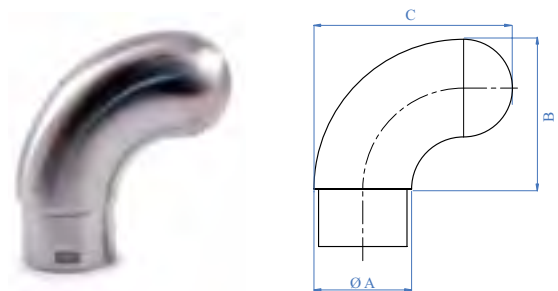
Part No.	Application Ø A	Dimension
AISI 316		
E452	For tube Ø A 42.4 x 2.0mm	B=65mm
E45210	For tube Ø A 48.3 x 2.0mm	B=65mm

45° ELBOW



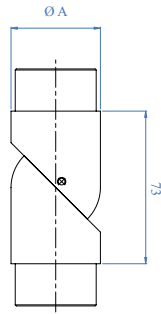
Part No.	Application Ø A	Dimension
AISI 316		
E2015	For tube Ø A 42.4 x 2.0mm	B = 50mm
E2015/26	For tube Ø A 42.4 x 2.5mm	B = 50mm
E2017	For tube Ø A 48.3 x 2.0mm	B = 55mm
E2017/26	For tube Ø A 48.3 x 2.5mm	B = 55mm

90° FLAT END



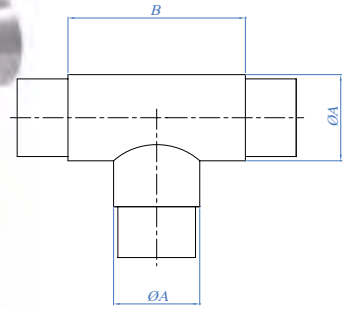
Part No.	Application Ø A	Dimension
AISI 316		
E481	For tube Ø A 42.4 x 2.0mm	B=60mm C=80mm
E482	For tube Ø A 48.3 x 2.0mm	B=60mm C=80mm

ARTICULATED ELBOW



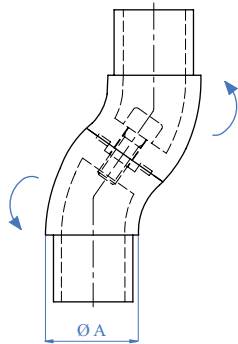
Part No.		Application Ø A
AISI 304	AISI 316	
-	E5588/26	For tube Ø A 42.4 x 2.5mm
E5587/304	E5587	For tube Ø A 42.4 x 2.0mm

3-WAY CONNECTING TEE



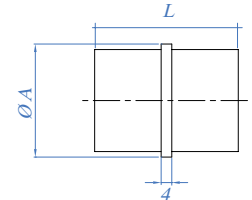
Part No.	Application Ø A	Dimension
AISI 316		
E453	For tube Ø A 42.4 x 2.0mm	B = 87mm
E453/26	For tube Ø A 42.4 x 2.5mm	B = 87mm
E2042	For tube Ø A 48.3 x 2.0mm	B = 87mm
E2042/26	For tube Ø A 48.3 x 2.5mm	B = 87mm

ARTICULATED ELBOW



Part No.	Application Ø A
AISI 316	
E4471	For tube Ø A 42.4 x 2.0mm
E4471/26	For tube Ø A 42.4 x 2.5mm
E4472	For tube Ø A 48.3 x 2.0mm
E4472/26	For tube Ø A 48.3 x 2.5mm

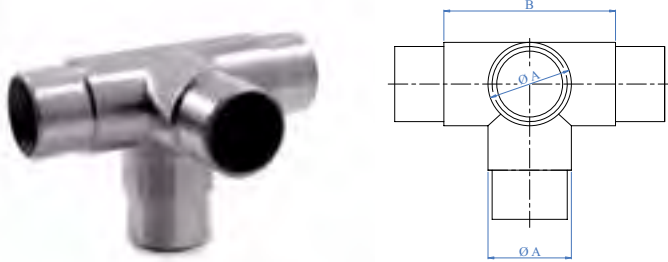
INTERNAL CONNECTOR



Part No.		Application Ø A	Dimension
AISI 304	AISI 316		
E455/304	E455	For tube Ø A 42.4 x 2.0mm	L = 54mm
-	E455/26	For tube Ø A 42.4 x 2.5mm	L = 54mm
-	E2062	For tube Ø A 48.3 x 2.0mm	L = 55mm
-	E2062/26	For tube Ø A 48.3 x 2.5mm	L = 55mm

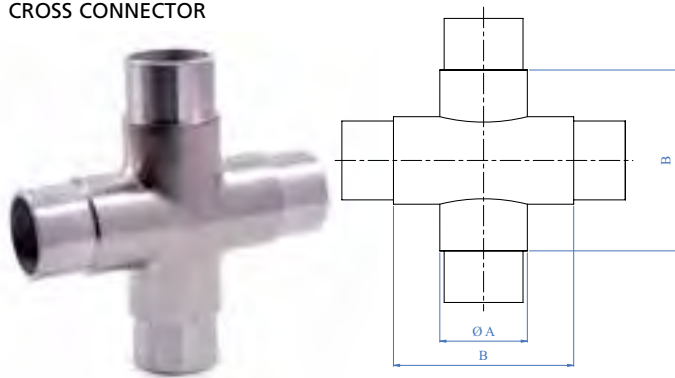


4-WAY CORNER CONNECTOR



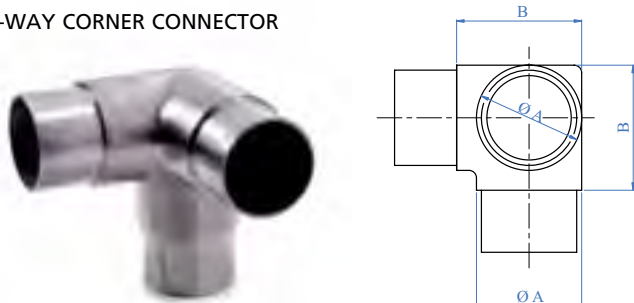
Part No.	Application Ø A	Dimension
AISI 316		
E2035	For tube Ø A 42.4 x 2.0mm	B = 89mm
E2035/26	For tube Ø A 42.4 x 2.5mm	B = 89mm
E2037	For tube Ø A 48.3 x 2.0mm	B = 90mm
E2037/26	For tube Ø A 48.3 x 2.5mm	B = 90mm

CROSS CONNECTOR



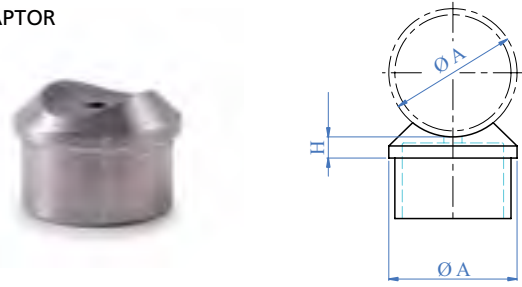
Part No.	Application Ø A	Dimension
AISI 316		
E2045	For tube Ø A 42.4 x 2.0mm	B = 87mm
E2045/26	For tube Ø A 42.4 x 2.5mm	B = 87mm
E2047	For tube Ø A 48.3 x 2.0mm	B = 91mm
E2047/26	For tube Ø A 48.3 x 2.5mm	B = 91mm

3-WAY CORNER CONNECTOR



Part No.	Application Ø A	Dimension
AISI 316		
E203	For tube Ø A 42.4 x 2.0mm	B = 70mm
E203/26	For tube Ø A 42.4 x 2.5mm	B = 70mm
E2032	For tube Ø A 48.3 x 2.0mm	B = 74mm
E2032/26	For tube Ø A 48.3 x 2.5mm	B = 74mm

ADAPTOR



Part No.	Application Ø A	Dimension
AISI 316		
E454	For tube Ø A 42.4 x 2.0mm	B = 6mm
E454/26	For tube Ø A 42.4 x 2.5mm	B = 6.5mm
E2052	For tube Ø A 48.3 x 2.0mm	B = 9mm
E2052/26	For tube Ø A 48.3 x 2.5mm	B = 9mm

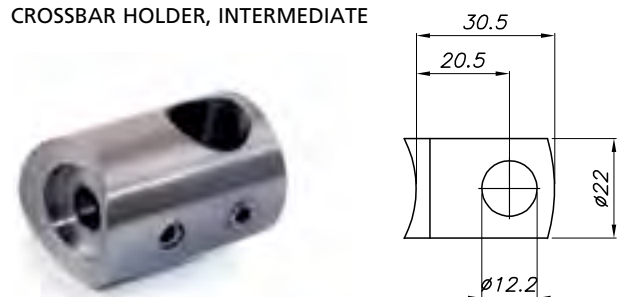
TUBE ADAPTER WITH SATIN FINISH - 316



Part No.	Application Ø A	Dimension
AISI 316		
E491	For tube Ø A 42.4 x 2.0mm	B = 12mm
E491/26	For tube Ø A 42.4 x 2.5mm	B = 12mm
E492	For tube Ø A 48.3 x 2.0mm	B = 14mm
E492/26	For tube Ø A 48.3 x 2.5mm	B = 14mm

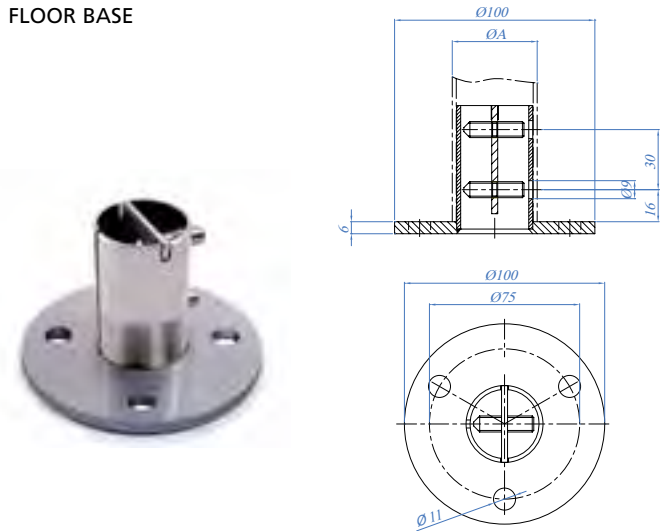
ROUND BAR HOLDER

CROSSBAR HOLDER, INTERMEDIATE



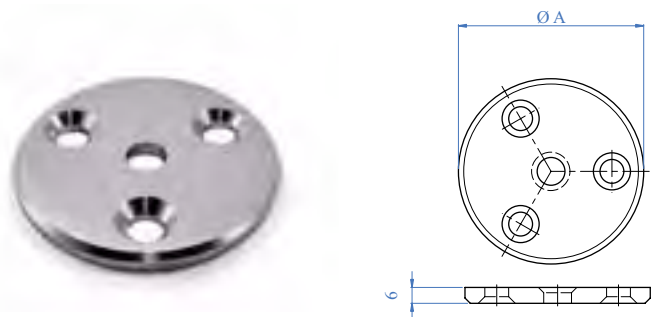
Part No.		Application Ø A	Hole
AISI 304	AISI 316		
E0069	E4040	For tube Ø A 42.4mm	12.2mm
E006916	E4041	For tube Ø A 48.3mm	12.2mm
E006920	E4044	Flat back	12.2mm

FLOOR BASE



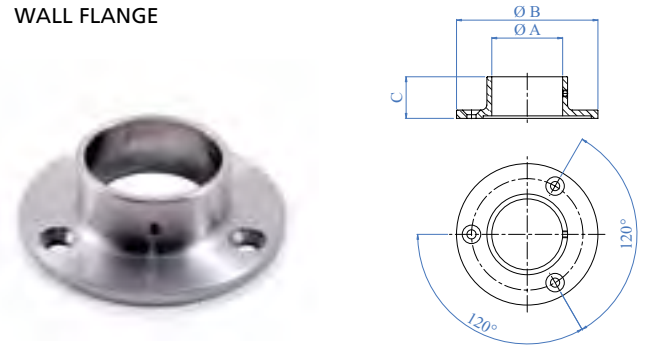
Part No.	Application Ø A
AISI 316	
E403	For tube Ø A 42.4 x 2.0mm
E403/26	For tube Ø A 42.4 x 2.5mm
E0214316	For tube Ø A 48.3 x 2.0mm
E0214316/26	For tube Ø A 48.3 x 2.5mm

DISC COUNTERSUNK HOLES AND CHAMFERED PERIMETER



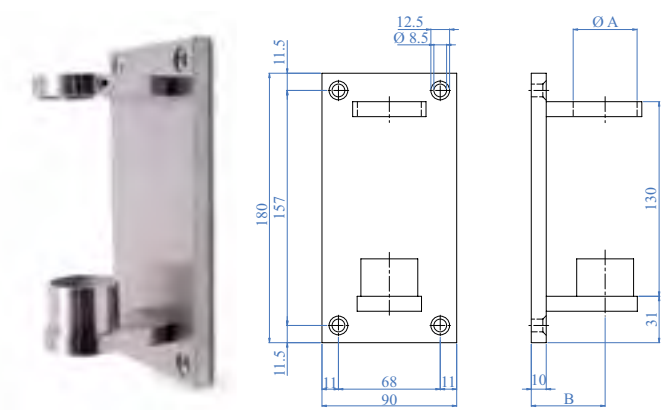
Part No.	Application	External holes	Central hole
AISI 316			
E0700316	Ø 100 x 6mm	3 x Ø 9mm	Ø 13mm

WALL FLANGE



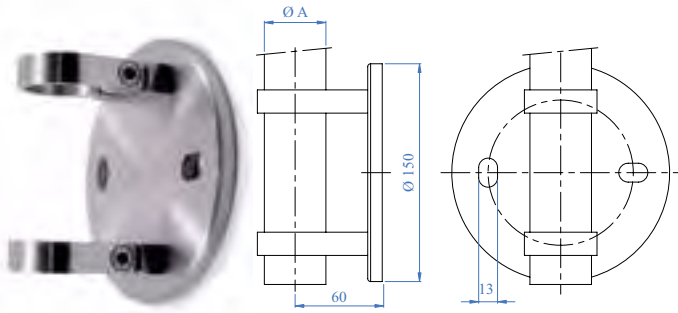
Part No.	Application Ø A	Dimension
AISI 316		
E456	For tube Ø A 42.4 x 2.0 and 2.5mm	B = Ø 85mm C = 25mm
E2067	For tube Ø A 48.3 x 2.0 and 2.5mm	B = Ø 95mm C = 29mm

SIDE MOUNTING BASE



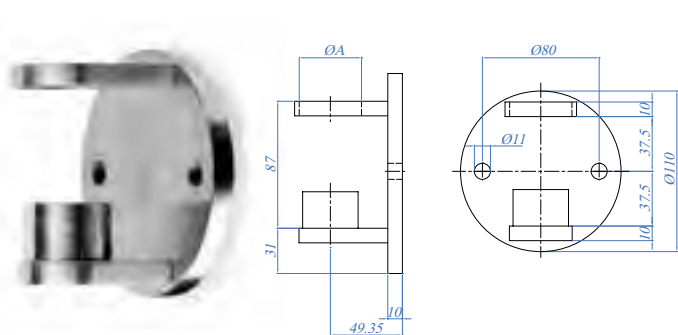
Part No.	Application Ø A	Dimension
AISI 316		
E406	For tube Ø A 42.4 x 2.0mm	B = 49mm
E406/26	For tube Ø A 42.4 x 2.5mm	B = 49mm
E407	For tube Ø A 48.3 x 2.0mm	B = 57mm
E407/26	For tube Ø A 48.3 x 2.5mm	B = 57mm

LATERAL BASE 304



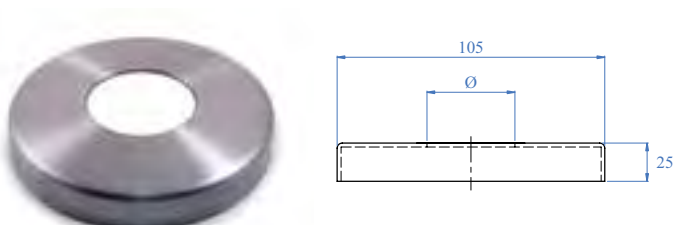
Part No.	Application Ø A
AISI 304	
E116	For tube Ø A 42.4mm
E118	For tube Ø A 48.3mm

SIDE MOUNTED BASE 316



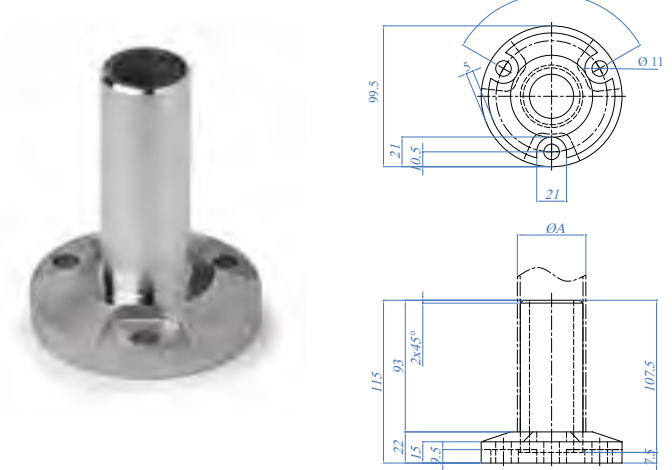
Part No.	Application Ø A
AISI 316	
E40350	For tube Ø A 42.4 x 2.0mm
E40350/26	For tube Ø A 42.4 x 2.5mm
E40360	For tube Ø A 48.3 x 2.0mm
E40360/26	For tube Ø A 48.3 x 2.5mm

COVER PLATE



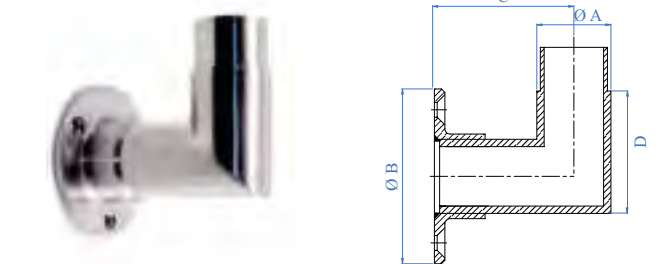
Part No.	Hole
AISI 316	
E4072/C	Ø = 43mm
E4073	Ø = 49 mm

FLOOR BASE (OUTDOOR USE)



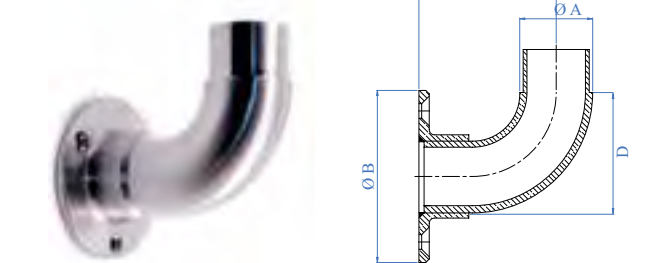
Part No.	Application Ø A
AISI 316	
E40310	For tube Ø A 42.4 x 2.0mm
E40310/26	For tube Ø A 42.4 x 2.5mm
E40320	For tube Ø A 48.3 x 2.0mm
E40320/26	For tube Ø A 48.3 x 2.5mm

ELBOW WITH FLANGE



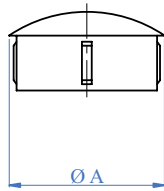
Part No.	Application Ø A	Dimension
AISI 316		
E4566	For tube Ø A 42.4 x 2.0mm	B = Ø 84mm C = 80mm D = 65mm
E4567	For tube Ø A 48.3 x 2.0mm	B = Ø 95mm C = 85mm D = 70mm

ELBOW WITH FLANGE



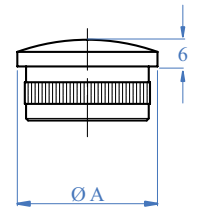
Part No.	Application Ø A	Dimension
AISI 316		
E4561	For tube Ø A 42.4 x 2.0mm	B = Ø 84mm C = 84mm D = 65mm
E4562	For tube Ø A 48.3 x 2.0mm	B = Ø 94mm C = 84mm D = 70mm

END CAPS



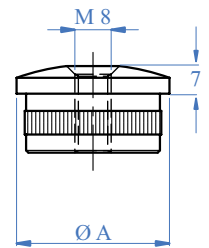
Part No.	Application Ø A
AISI 316	
E316	For tube Ø A 42.4 x 2.0 and 2.5mm
E317	For tube Ø A 48.3 x 2.0 and 2.5mm

END CAP PLAIN 316

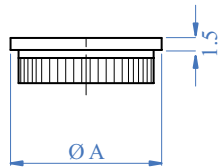


Part No.	Application Ø A
AISI 316	
E4135/26	For tube Ø A 48.3 x 2.5mm

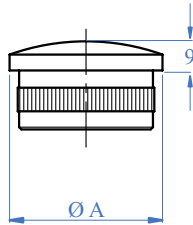
END CAP WITH M8 316



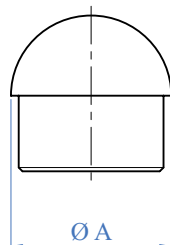
Part No.	Application Ø A
AISI 316	
E4130	For tube Ø A 42.4 x 2.0mm
E4131	For tube Ø A 48.3 x 2.0mm
E4130/26	For tube Ø A 42.4 x 2.5mm
E4131/26	For tube Ø A 48.3 x 2.5mm



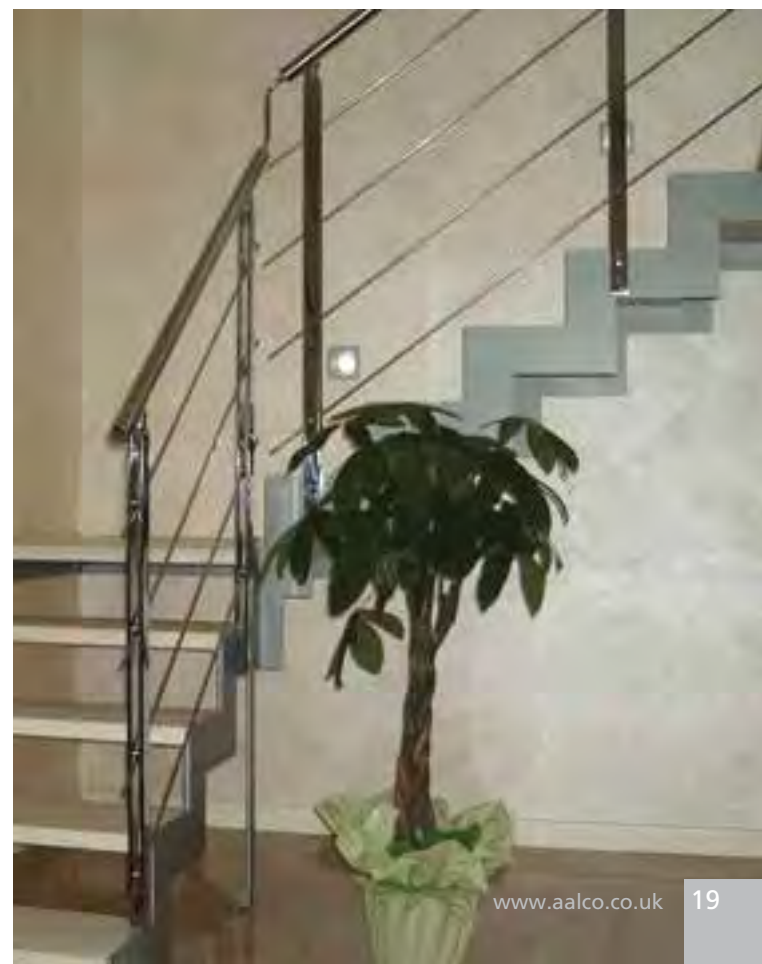
Part No.	Application Ø A
AISI 303	
E01151	For tube Ø A 42.4 x 2.0mm
E01151/26	For tube Ø A 42.4 x 2.5mm
E01152	For tube Ø A 48.3 x 2.0mm
E01152/26	For tube Ø A 48.3 x 2.5mm



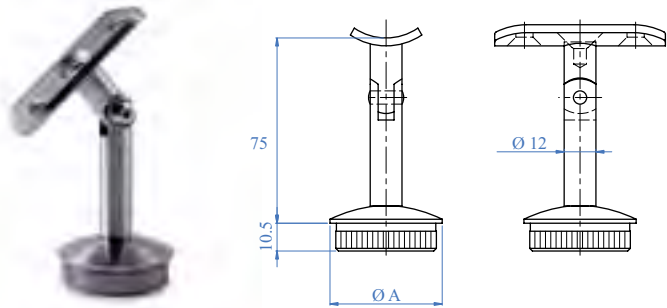
Part No.	Application Ø A
AISI 316	
E4120	For tube Ø A 42.4 x 2.0mm
E4120/26	For tube Ø A 42.4 x 2.5mm



Part No.	Application Ø A
AISI 316	
E465	For tube Ø A 42.4 x 2.0mm
E465/26	For tube Ø A 42.4 x 2.5mm
E466	For tube Ø A 48.3 x 2.0mm
E466/26	For tube Ø A 48.3 x 2.5mm

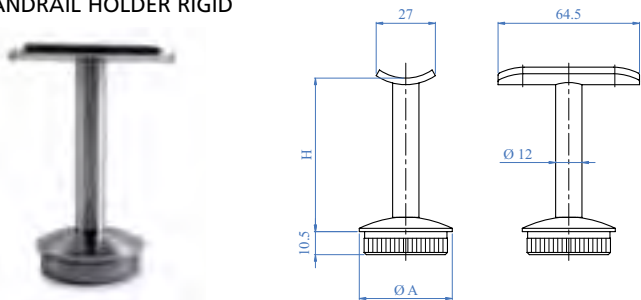


HANDRAIL HOLDER ADJUSTABLE



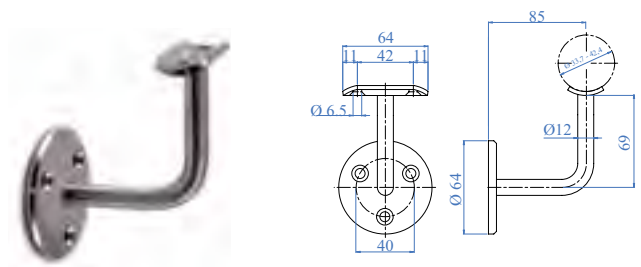
Part No.	Application Ø A
AISI 316	
E030/S316	For tube Ø A 42.4 x 2.0mm
E030/S316/26	For tube Ø A 42.4 x 2.5mm
E0302316	For tube Ø A 48.3 x 2.0mm
E0302316/26	For tube Ø A 48.3 x 2.5mm

HANDRAIL HOLDER RIGID



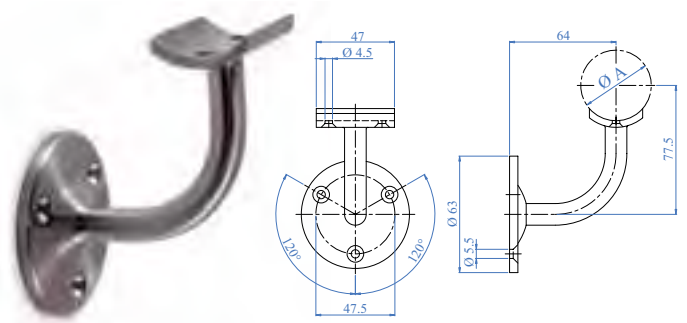
Part No.	Application Ø A
AISI 316	
E031/S1316	For tube Ø A 42.4 x 2.0mm
E031/S316/26	For tube Ø A 42.4 x 2.5mm
E0312316	For tube Ø A 48.3 x 2.0mm
E0312316/26	For tube Ø A 48.3 x 2.5mm

WALL SUPPORT

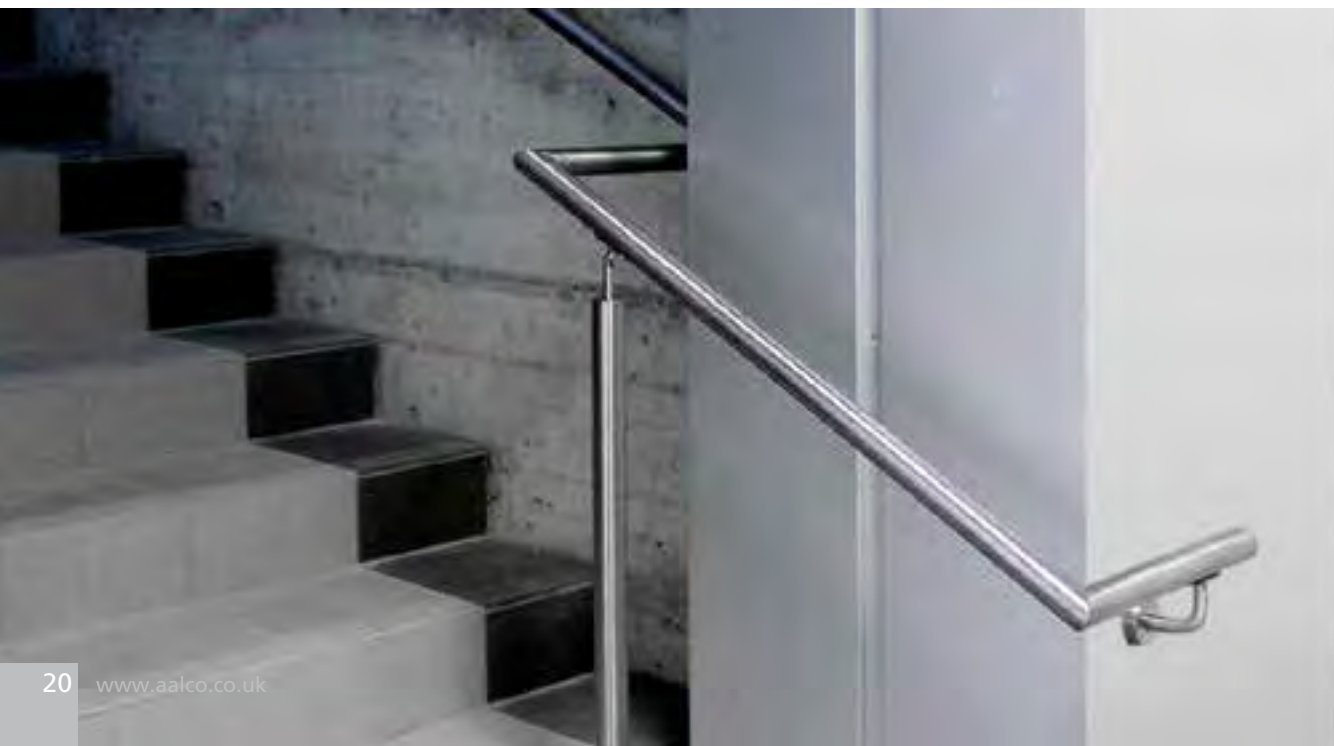


Part No.	Application Ø A
AISI 304	
E02230	For tube Ø A 42.4mm
E02232	For tube Ø A 48.3mm

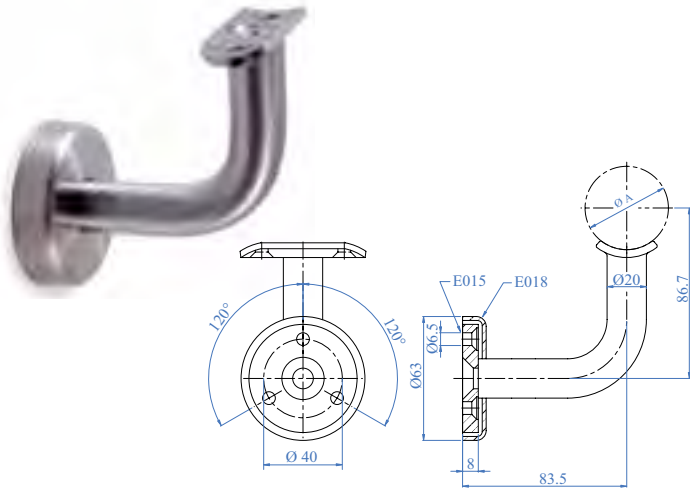
WALL SUPPORT



Part No.	Application Ø A
AISI 316	
E459	For tube Ø A 42.4mm

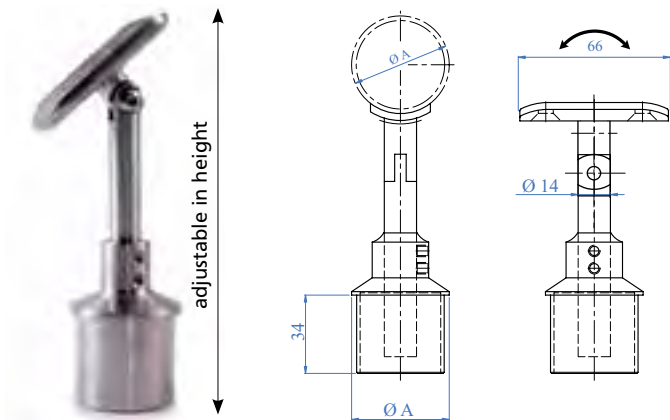


WALL SUPPORT



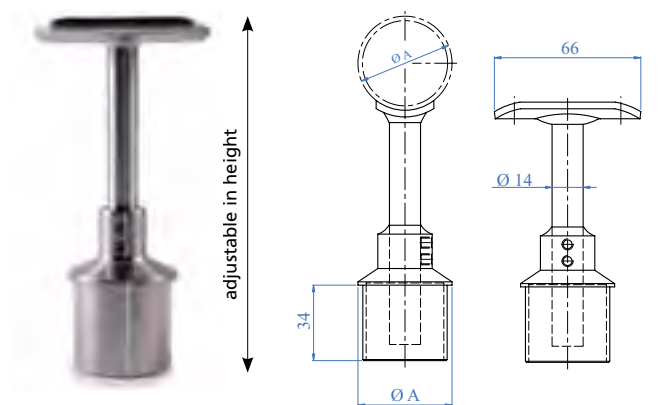
Part No.	Application Ø A
AISI 316	
E022/S316	For tube Ø 33.7 - 42.4mm

HANDRAIL SUPPORTS WITH ADJUSTABLE HEIGHT



Part No.	Application Ø A
AISI 316	
E500/424	For tube Ø 42.4mm

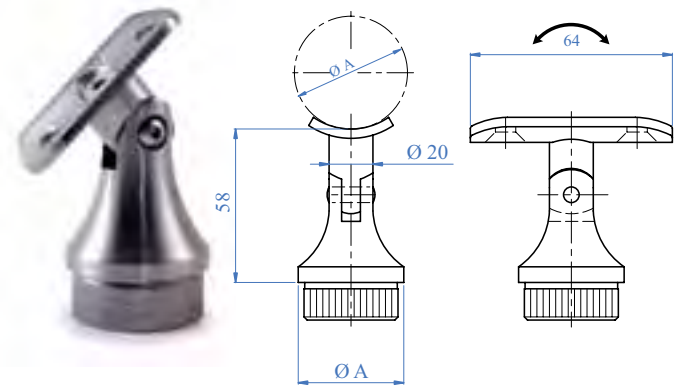
Joint is pivoted and adjustable in height with a satin finish



Part No.	Application Ø A
AISI 316	
E510/424	For tube Ø 42.4 x 2.0mm

Joint is pivoted and adjustable in height with a satin finish

3 PIECES COMPLETE WITH SCREW AND END CAP FOR TUBE



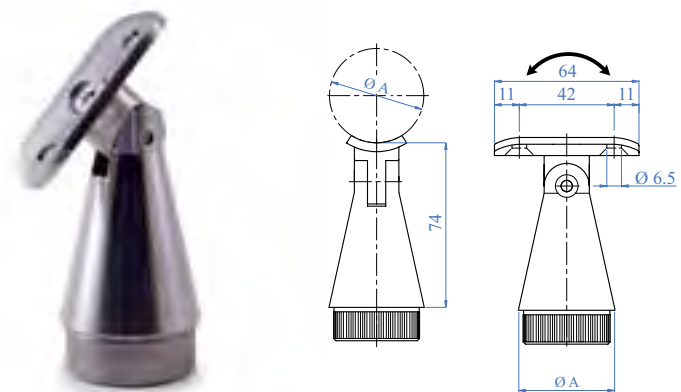
Part No.		Application Ø A
AISI 303	AISI 316	
E0104	E0104316	For tube Ø A 42.4 x 2.0mm

2 PIECES COMPLETE WITH END CAP FOR TUBE



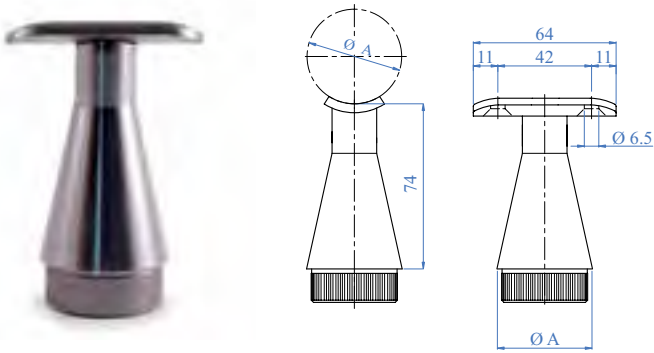
Part No.		Application Ø A
AISI 303	AISI 316	
E0102	E0102316	For tube Ø A 42.4 x 2.0mm

3 PIECES COMPLETE WITH SCREW AND END CAP FOR TUBE



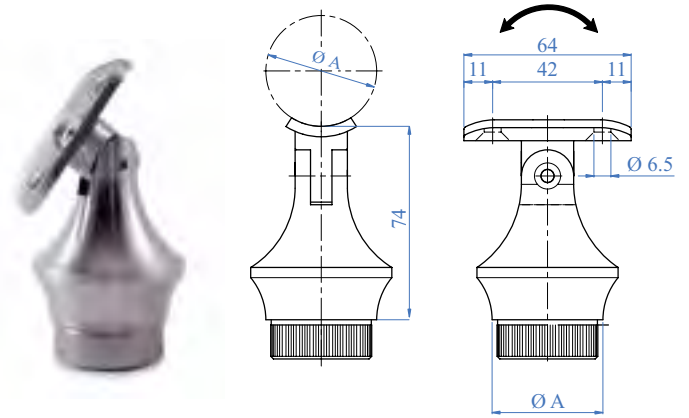
Part No.		Application Ø A
AISI 303	AISI 316	
E040300	E040310	For tube Ø A 42.4 x 2.0mm

2 PIECES COMPLETE WITH END CAP FOR TUBE



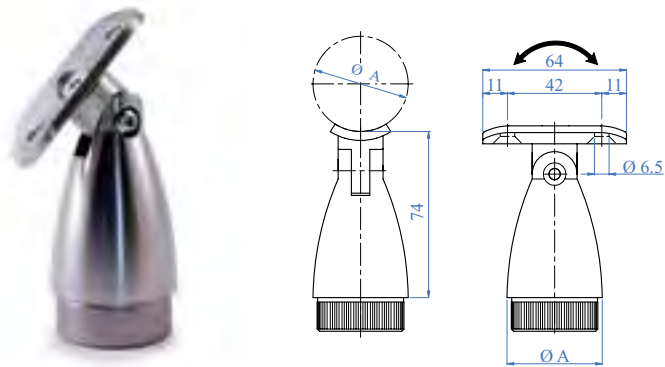
Part No.		Application Ø A
AISI 303	AISI 316	
E040500	E040510	For tube Ø A 42.4 x 2.0mm

3 PIECES COMPLETE WITH SCREW AND END CAP FOR TUBE



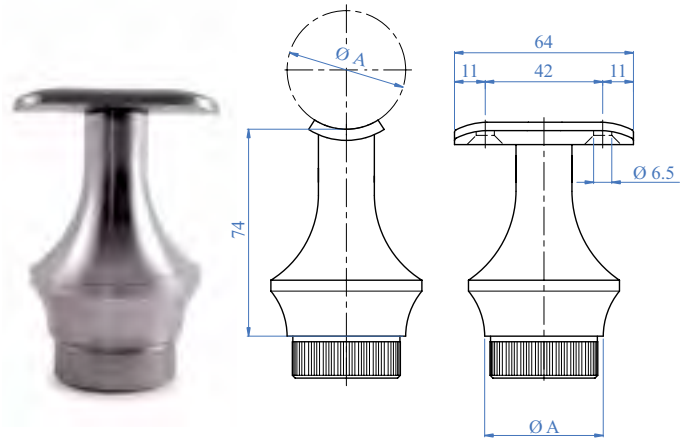
Part No.		Application Ø A
AISI 303	AISI 316	
E041100	E041110	For tube Ø A 42.4 x 2.0mm

3 PIECES COMPLETE WITH SCREW AND END CAP FOR TUBE



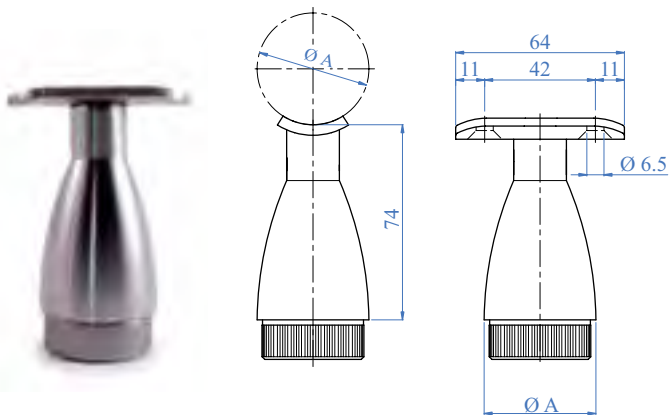
Part No.		Application Ø A
AISI 303	AISI 316	
E040700	E040710	For tube Ø A 42.4 x 2.0mm

2 PIECES COMPLETE WITH END CAP FOR TUBE



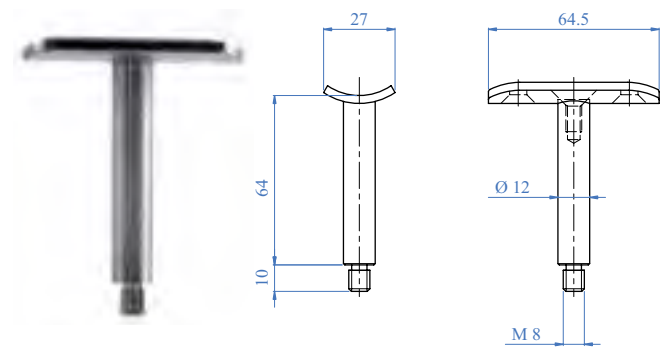
Part No.		Application Ø A
AISI 303	AISI 316	
E041300	E041310	For tube Ø A 42.4 x 2.0mm

2 PIECES COMPLETE WITH END CAP FOR TUBE



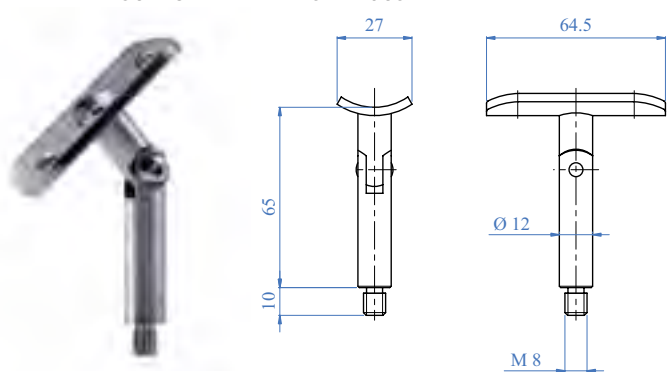
Part No.		Application Ø A
AISI 303	AISI 316	
E040900	E040910	For tube Ø A 42.4 x 2.0mm

HANDRAIL SUPPORT ELEMENTS - RIGID



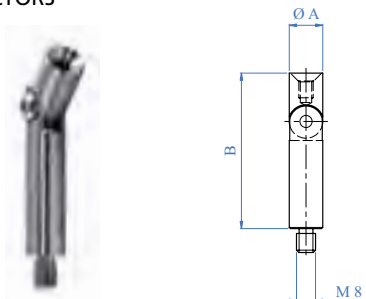
Part No.		For tube
AISI 304	AISI 316	
E041400	E041500	Ø 33.7 - 42.4mm

HANDRAIL SUPPORT ELEMENTS - ADJUSTABLE



Part No.		For tube
AISI 304	AISI 316	
E041410	E041510	Ø 33.7 - 42.4mm

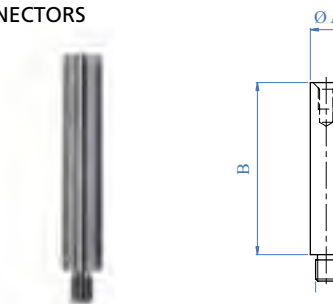
CONNECTORS



Part No.		Dimensions A x B	Pivotable
AISI 304	AISI 316		
E011931	E011931316	Ø 12 x 65mm	Yes
E01193	E01193316	Ø 14 x 65mm	Yes

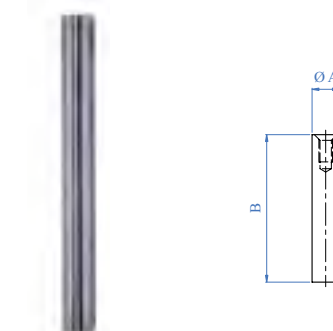
Pivoted with external M8 thread and internal M6 thread

CONNECTORS



Part No.		Dimensions A x B
AISI 304	AISI 316	
E011941	E011941316	Ø 12 x 65mm
E01194	E01194316	Ø 14 x 65mm
E011943	E011943316	Ø 12 x 115mm
E011944	E011944316	Ø 14 x 115mm

Fixed with external M8 thread and internal M6 thread

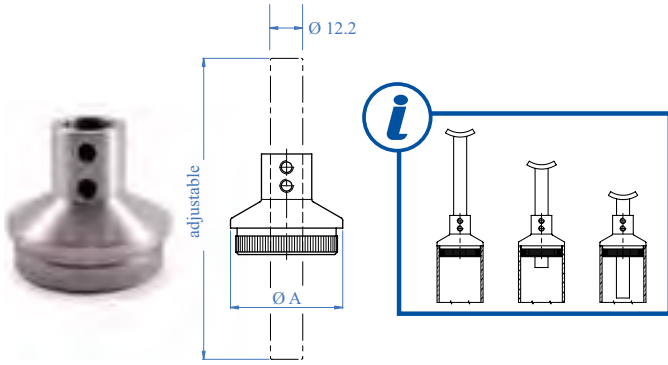


Part No.		Dimensions A x B
AISI 304	AISI 316	
E011945	E011945316	Ø 12 x 80mm
E0119451	E0119451316	Ø 14 x 80mm
E011940	E011940316	Ø 12 x 115mm rounded head
E0119441	E011944316	Ø 14 x 115mm rounded head

With one internal M6 thread



END CAPS HANDRAIL HOLDERS



Part No.		Application Ø A
AISI 304	AISI 316	
E01195100	E02195100	For tube Ø A 33.7 x 2.0mm
E01196100	E02196100	For tube Ø A 42.4 x 2.0mm

MOUNTING PLATES

Thickness 4mm Flat back



Part No.		Application Ø A
AISI 304	AISI 316	
E01197	E01197316	For tube Ø A 33.7 - Ø 42.4mm
E011972	E011972316	For tube Ø A 48.3 x Ø 60.3mm
E011976	E011976316	Flat back

3 pieces complete with aluminium flange Ø 55 x 8mm and flange canopy Ø 62 x 15mm

45° MOUNTING PLATES

Thickness 4 mm



Part No.		Application Ø A
AISI 304	AISI 316	
E011974	E011974316	For tube Ø A 33.7 - Ø 42.4mm
E011975	E011975316	For tube Ø A 48.3 x Ø 60.3mm

90° MOUNTING PLATES

Thickness 4 mm

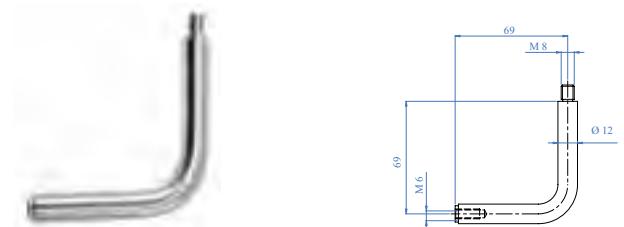


Part No.		Application Ø A
AISI 304	AISI 316	
E011971	E011971316	For tube Ø A 33.7 - Ø 42.4mm
E011973	E011973316	For tube Ø A 48.3 x Ø 60.3mm

FITTINGS FOR HANDRAIL



Part No.		Description
AISI 304	AISI 316	
E011948	E011948316	With internal M6 threads



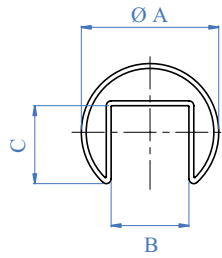
Part No.		Description
AISI 304	AISI 316	
E011946	E011946316	With internal M8 threads

Dimensions 75 x 75 mm Ø12 mm satin finish without screw



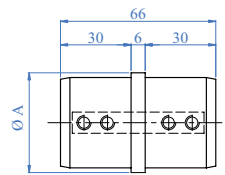
Part No.		Description
AISI 304	AISI 316	
E011946i7	E011947316	With internal M6 threads

SLOTTED TUBE



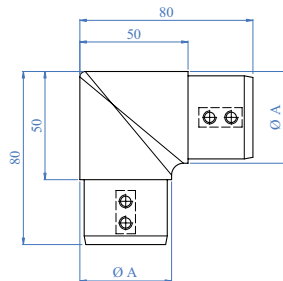
Part No.		Application Ø A	Dimension B x C
AISI 304	AISI 316		
E1000424	E1100424	Tube Ø A 42.4 x 1.5mm	25 x 24mm
E100483	E1100483	Tube Ø A 48.3 x 1.5mm	26 x 30mm

CONNECTOR



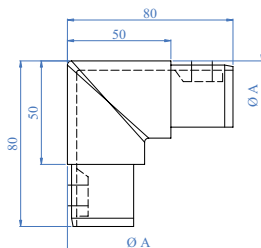
Part No.		Application Ø A
AISI 316		
E1200100	Tube Ø A 42.4 x 1.5mm	
E1200110	Tube Ø A 48.3 x 1.5mm	

90° ANGLE - HORIZONTAL



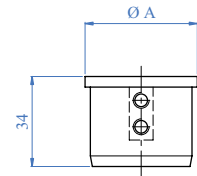
Part No.		Application Ø A
AISI 316		
E1400100	Tube Ø A 42.4 x 1.5mm	
E1400110	Tube Ø A 48.3 x 1.5mm	

90° ANGLE - HORIZONTAL



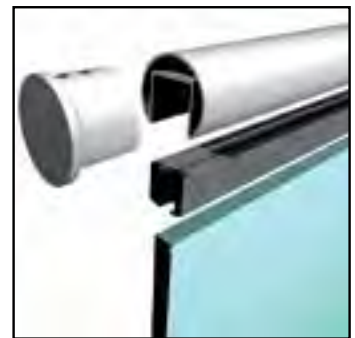
Part No.		Application Ø A
AISI 316		
E1500100	Tube Ø A 42.4 x 1.5mm	
E1500110	Tube Ø A 48.3 x 1.5mm	

END CAPS

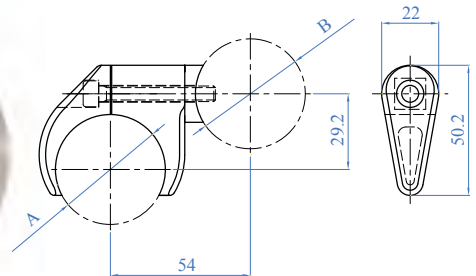


Part No.	Application Ø A
AISI 316	
E1100100	Tube Ø A 42.4 x 1.5mm
E1100110	Tube Ø A 48.3 x 1.5mm

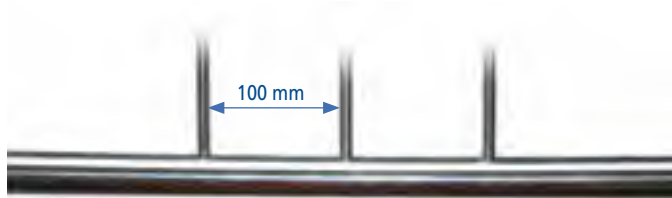
RUBBER INSERT - Minimum quantity 6 metres



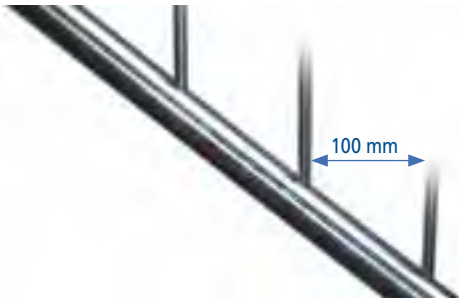
Part No.	Tube Size	Application	Coil length
RUBBER			
E1999100	Ø 42.2	Glass 8 - 10.76mm	30m
E1999200	Ø 42.2	Glass 12 - 16.76mm	30m
E1999300	Ø 42.2	Glass 16.76 - 18mm	30m
E1999400	Ø 48.3	Glass 8 - 13mm	30m
E1999500	Ø 48.3	Glass 13 - 17.52mm	30m
E1999650	Ø 48.3	Glass 18 - 21.5mm	30m



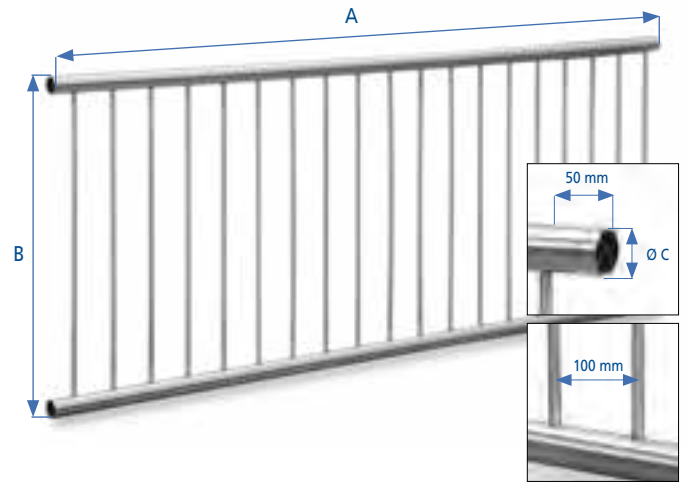
Part No.		Application Ø A
AISI 304	AISI 316	
E1500300	E1500310	For tube Ø A 33.7 - Ø 42.4mm
E1500400	E1500410	For tube Ø A 48.3 x Ø 60.3mm
E1500500	E1500510	Flat back



Part No.		Dimension	Hole	Drilling angle
AISI 304	AISI 316			
E1900100	E1900110	42.4 x 2.0 x 3000mm	12mm	90°



Part No.		Dimension	Hole	Drilling angle
AISI 304	AISI 316			
E1900200	E1900210	42.4 x 2.0 x 3000mm	12mm	28 - 32°

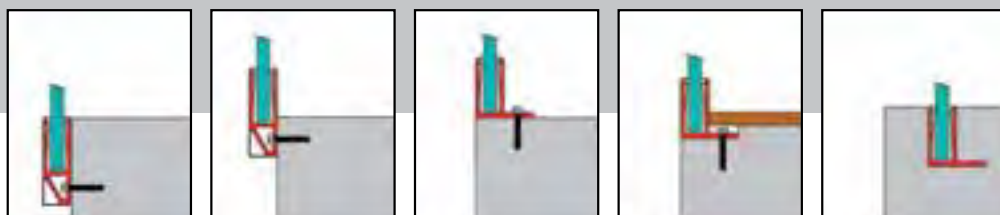


Part No.		Dimension A x B	Ø C
AISI 304	AISI 316		
E1900300	E1900310	2000 x 900mm	42.4mm
E1900400	E1900410	3000 x 900mm	42.4mm
E1900500	E1900510	2000 x 1100mm	42.4mm
E1900600	E1900610	3000 x 1100mm	42.4mm



glassu[®]

GLASS U is a new concept for glass railings. It is extremely easy and fast to install since it was developed expressly for installers. The system does not require the use of concrete during installation and allows for easy replacement of glass whenever necessary.



HORIZONTAL PRESSURE RESISTANCE

This test consists of applying a 200 kg/lm horizontal force on the handrail level for 5 minutes. When the load is released there must be no break nor evident signs of deformations on the aluminium support.

TRACTION RESISTANCE

We applied a force of 500 N (50kg) on a sheet secured by the Glass U system for 5 minutes. The results of the test are more than positive. When the load was released, there were no deformation nor breaks.

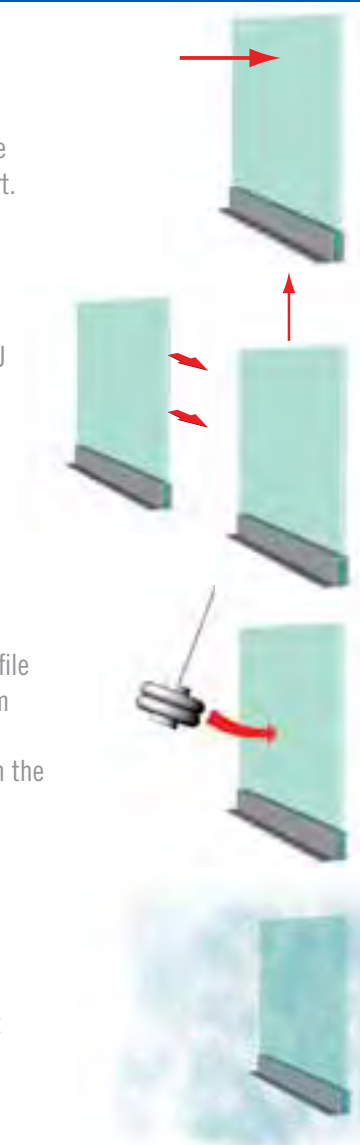
IMPACT RESISTANCE

This test consists of striking a piece of glass supported by a "U" profile with a 50kg weight, hitting it at its most critical point. The pendulum carrying the weight must have a length of 1.5m and must cover a movement of 30° from its point of release to the point of impact with the glass.

CORROSION RESISTANCE

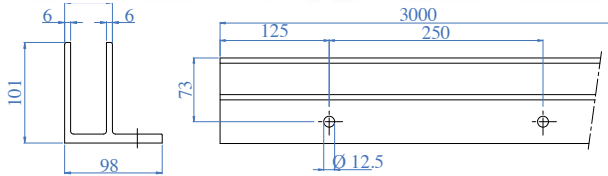
To carry out this test according to ISO 9227:2006, the products are put inside a saline fog room. A 5% solution of salt (NaCl) with a pH level between 6.5 and 7.2 is nebulised within the room at a constant temperature of +35°C.

The test lasts for a duration of 120 hours.

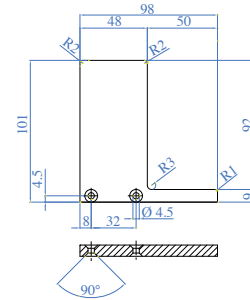
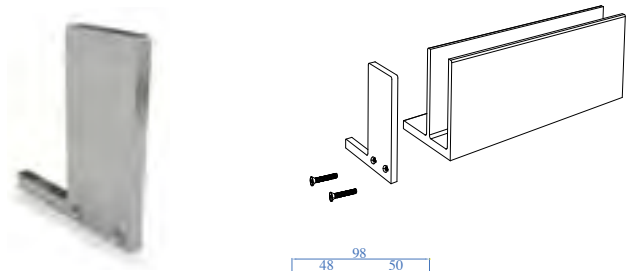


CERTIFICATION AND TESTED REPORT AVAILABLE AT WWW.ARTEFERRO.COM

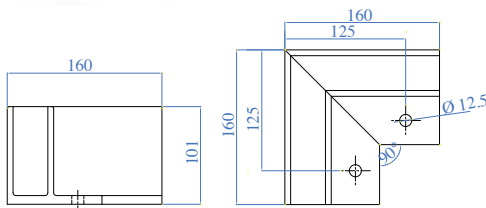
FLOOR FIXING CHANNEL END ACCESSORIES



Part No.	Description	Grade
E1600100	Aluminium support for floor anchoring	Aluminium

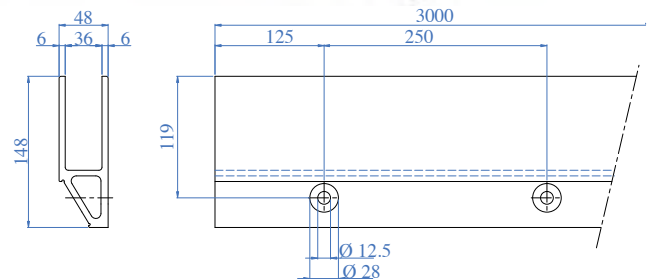


Part No.	Grade
E1600700	Aluminium

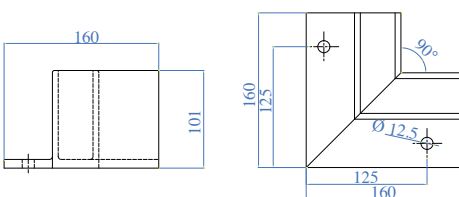
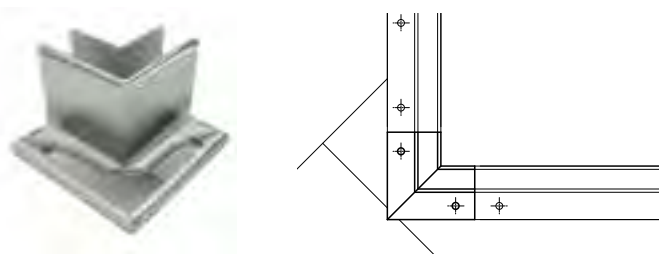


Part No.	Grade
E1600500	Aluminium

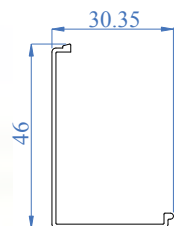
WALL FIXING CHANNEL END ACCESSORIES



Part No.	Description	Grade
E1700200	Aluminium support for floor anchoring	Aluminium

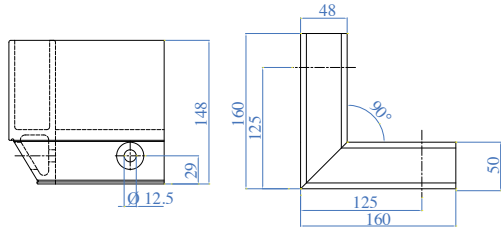
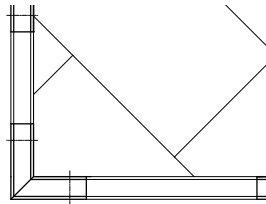


Part No.	Grade
E1600600	Aluminium

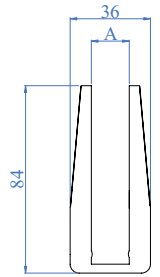


Part No.	Description	Grade
E1700300	Carter to cover the holes of glass anchoring E1700200	Aluminium

WALL FIXING CHANNEL END ACCESSORIES



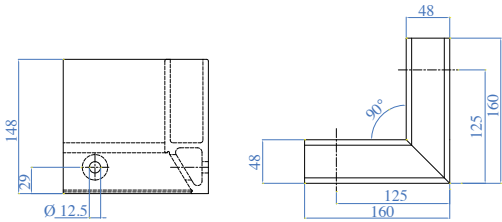
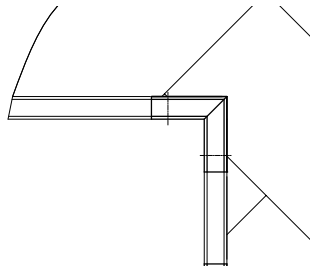
Part No.	Grade
E1700500	Aluminium



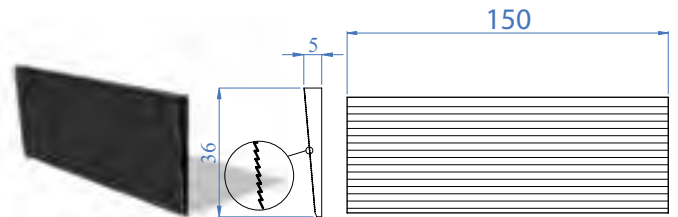
CLOSING DEVICES

Rubber gaskets to be used with items E1600100 and E1700100

Part No.	Glass thickness A	Grade
E1999800	16.76 - 17.52mm	RUBBER
E1999810	20.76 - 21.52mm	RUBBER

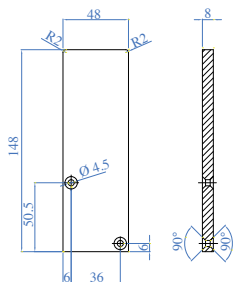
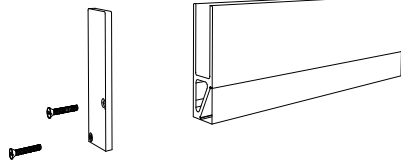


Part No.	Grade
E1700600	Aluminium

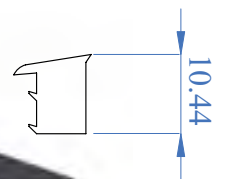


Fixing wedges are made of synthetic material

Part No.	Grade
E1999830	RUBBER



Part No.	Grade
E1700700	Aluminium

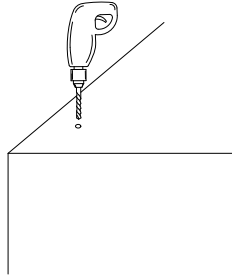


CLOSING GASKET

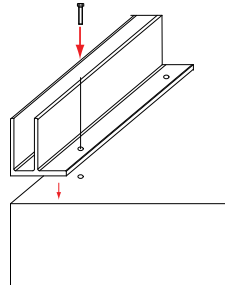
Part No.	Glass thickness A	Coil length	Grade
E1999850	16.76 - 17.52mm	30m	RUBBER
E1999860	20.76 - 21.52mm	30m	RUBBER

GLASS U - FLOOR ANCHORAGE INSTALLATION - Assembly instruction according to the certification

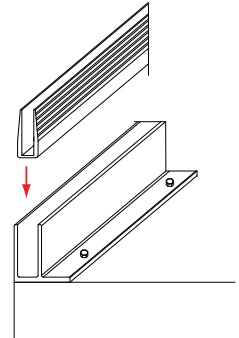
- ① Drill the floor with holes corresponding to the profile being fitted, using an appropriate drill size



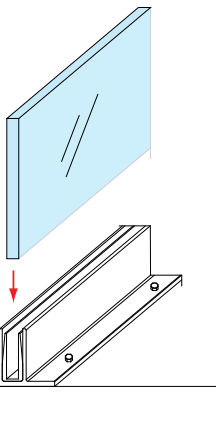
- ② Use M12 screws (tightening to 20Nm) suitable to the surface on which the railing is being secured. Follow the torque settings given by the manufacturer of the screws



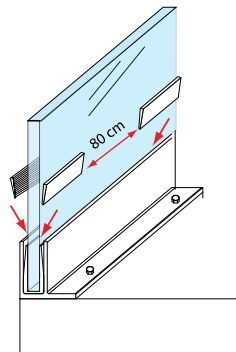
- ③ Insert the chosen U-shaped rubber gasket into the aluminium profile



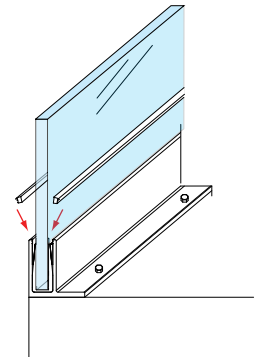
- ④ Place the glass inside the rubber gasket



- ⑤ Fix the whole unit using the toothed wedges. Placing a wedge on both sides of the glass, repeat the operation every 80cm



- ⑥ Complete the assembly by inserting the closing gaskets to protect the system against the weather (rain, snow, etc.)

**WARNINGS**

Please retain this book - particularly the installation manual. Please read the instruction manual carefully before assembly and installation. Do not forget to act always in accordance with the laws of the intended country of installation. In special cases, please check local and national construction rules (For example: in Germany DIN 18065 and the related law: Bauo Bauordnungrechtes). Install each item as indicated in the relevant installation manual. Do not install or use the item if you have doubts concerning its installation. Do not use or install the product if you are missing any components. In such cases, please contact your local dealer or the manufacturer IAM Design.

REGULAR MAINTENANCE AND INSPECTION

Installation should be carried out by skilled fitters, following the instructions on the technical sheets supplied by IAM Design. Maintenance and regular inspections are necessary to maintain perfect functionality and efficiency. Again, inspections and maintenance operations should only be carried out by competent and skilled workers. Employment of fitters approved by the manufacturer is highly recommended. Otherwise IAM Design refuses all responsibility.

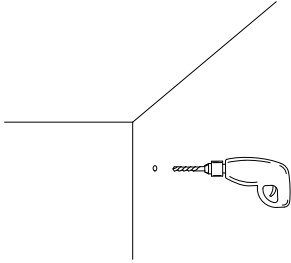
CLEANING

The use of stainless steel metallic parts guarantees resistance to different atmospheric conditions. Do not use acids, alkaline solutions or aggressive, abrasive or corrosive agents to clean the handrail system.

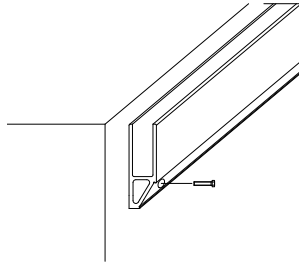


GLASS U - WALL ANCHORAGE INSTALLATION - Assembly instruction according to the certification

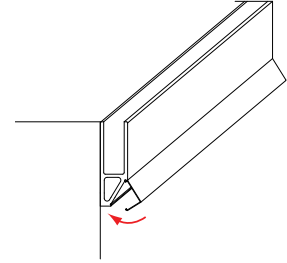
- ① Drill the wall with holes corresponding to the profile being fitted, using an appropriate drill size



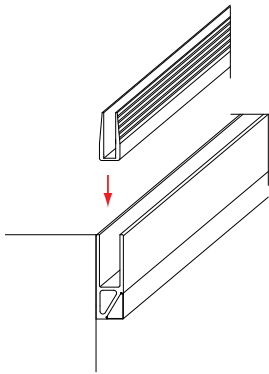
- ② Use M12 screws (tightening to 20Nm) suitable to the surface on which the railing is being secured. Follow the torque settings given by the manufacturer of the screws



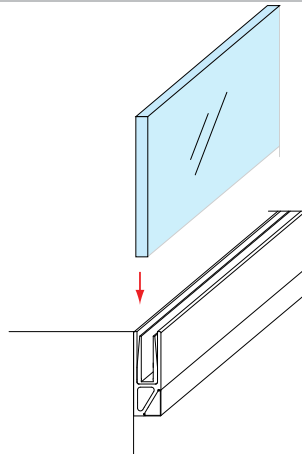
- ③ Insert the end channel to cover the screws along the whole length of the U-shaped profile



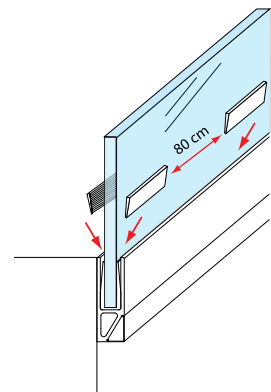
- ④ Insert the chosen U-shaped rubber gasket into the aluminium profile



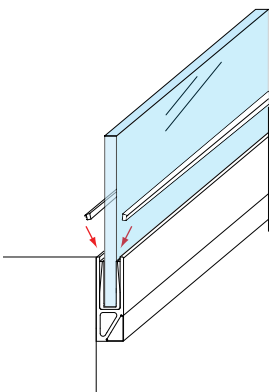
- ⑤ Place the glass inside the rubber gasket



- ⑥ Fix the whole unit using the toothed wedges. Placing a wedge on both sides of the glass, repeat the operation every 80cm

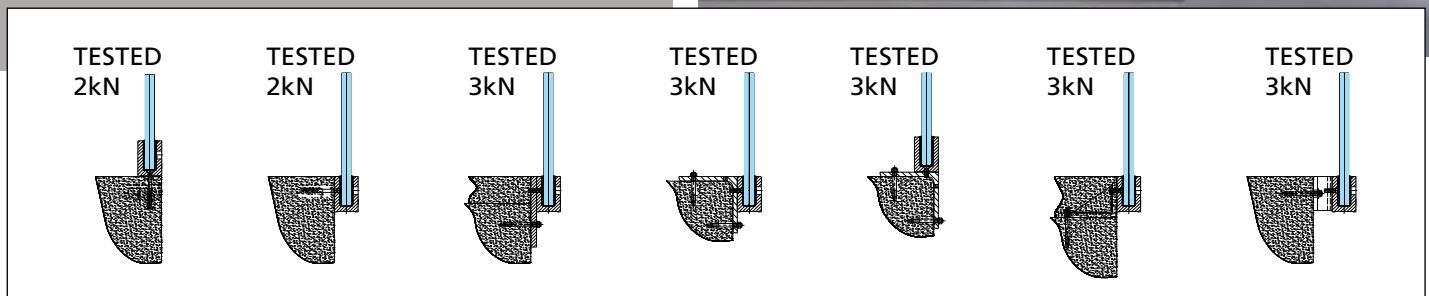


- ⑦ Complete the assembly by inserting the closing gaskets to protect the system against the weather (rain, snow, etc.)



glass U[®] STRONG
3kN

FOR PUBLIC AND CROWDED SPACES



When a space is often very crowded, it is wise to make handrail systems even more secure. That's why we created GLASS U EXTRA STRONG 3 kN - ideal for museums, stadia, airports etc. - a profile that withstands a 300kg horizontal force, as specified by the strictest European and Italian laws. Tested by the international company TÜV SÜD, test report no: MEC 10117.00

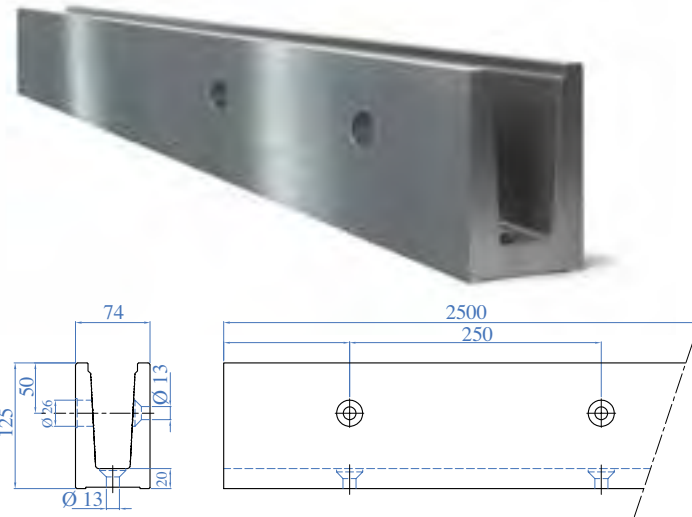
HORIZONTAL PRESSURE RESISTANCE

This test consists of applying a 300kg/m horizontal force for 5 minutes. When the load is released, there must be no break nor evident signs of deformation on the aluminium support. The test described was carried out on seven different applications.



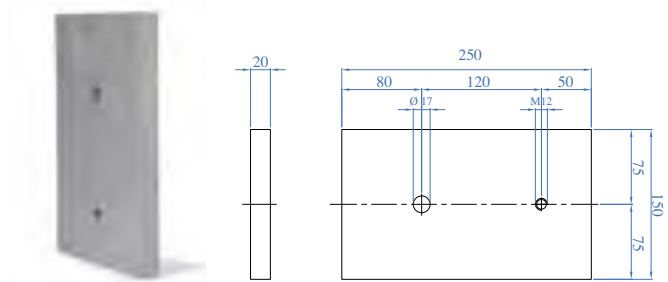
CERTIFICATION AND TESTED REPORT AVAILABLE AT WWW.ARTEFERRO.COM

BASE FITTING



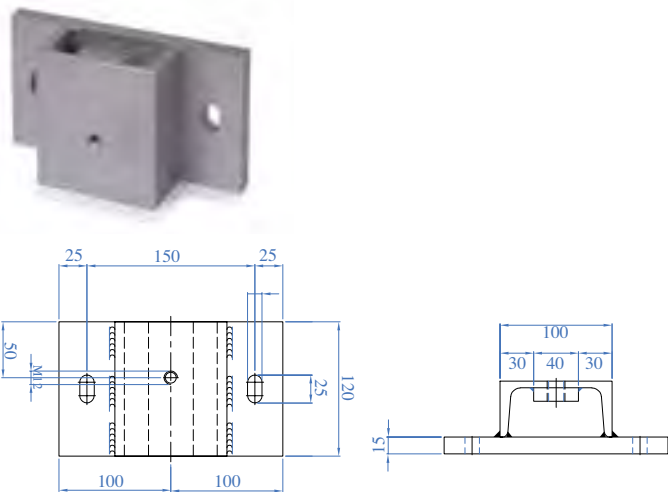
Part No.	Grade
E1800100	Aluminium

WALL FIXING ELEMENT



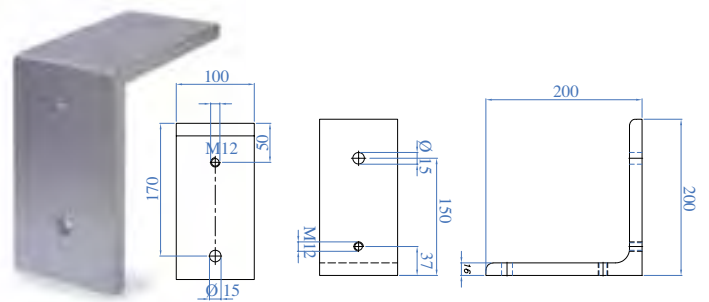
Part No.	Grade
E1800200	Galvanized Iron

SPACED WALL FIXING ELEMENT



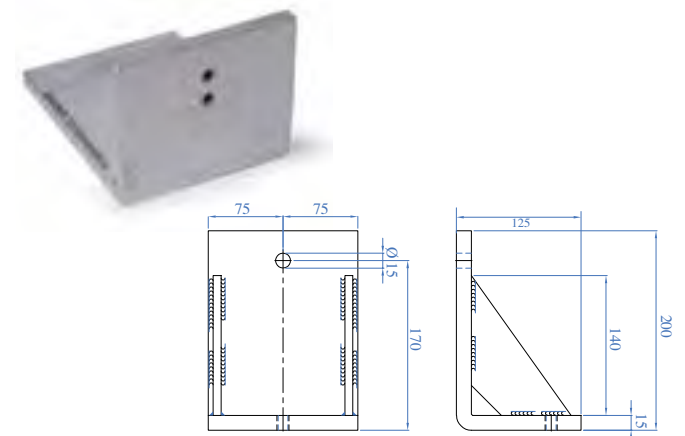
Part No.	Grade
E1800300	Galvanized Iron

WALL OR FLOOR FIXING ELEMENT



Part No.	Grade
E1800400	Galvanized Iron

FLOOR FIXING ELEMENT



Part No.	Grade
E1800500	Galvanized Iron

HOLE CAP FOR PROFILE E1800100



Part No.	Grade
E1800800	Aluminium

BACK HOLE CAP FOR PROFILE E1800100



Part No.	Grade
E1800900	Aluminium

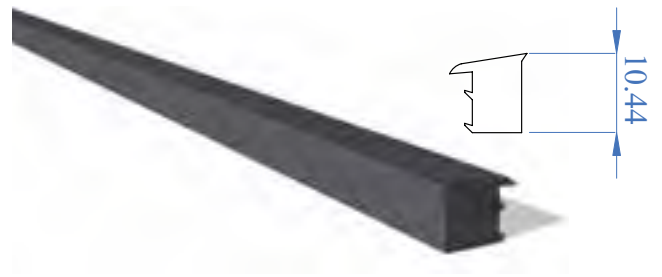
CLOSING DEVICES



Rubber gaskets to be used with item E1800100

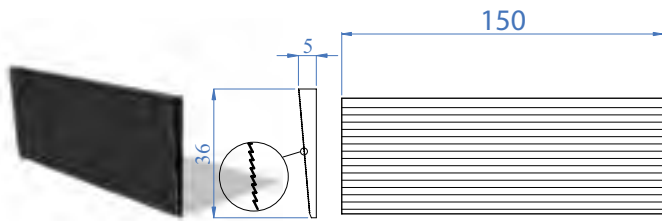
Part No.	Glass thickness A	Grade
E1800600	26.5 - 27mm	RUBBER
E1800700	30.5 - 31mm	RUBBER

CLOSING GASKET



Part No.	Glass thickness A	Coil length	Grade
E1800620	26.5 - 27mm	30m	RUBBER
E1800720	30.5 - 31mm	30m	RUBBER

Please note that the minimum glass thickness for Glass U Extra Strong is 26.5mm.



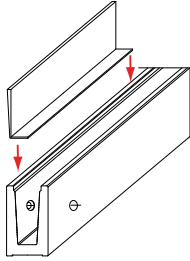
Fixing wedges are made of synthetic material

Part No.	Glass thickness A	Grade
E1800610	26.5 - 27mm	RUBBER
E1800710	30.5 - 31mm	RUBBER

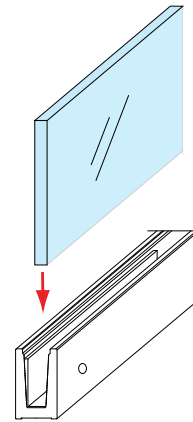


HOW TO FIX THE GLAZING PANELS - Assembly instructions according to certification

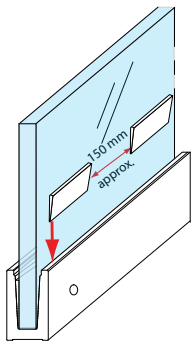
- ① Insert the chosen L-shaped rubber gasket into the aluminium profile



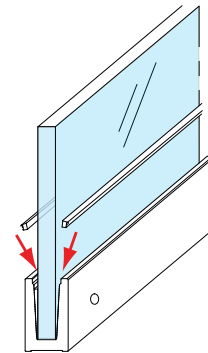
- ② Place the glass panel into the rubber gasket



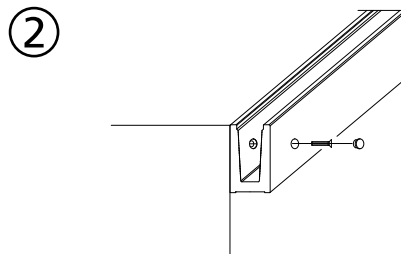
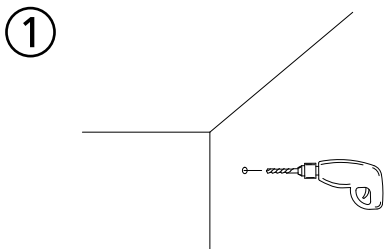
- ③ Fix the whole unit using the wedges, placing them on the opposite ends of the L-shaped gasket



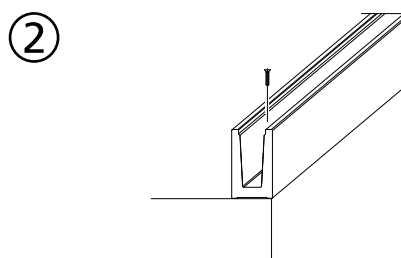
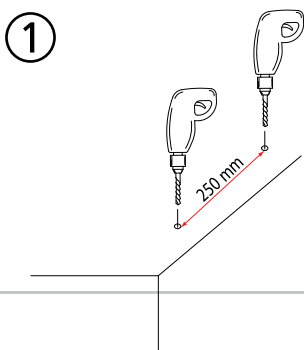
- ④ Finish the assembling by inserting the closing gasket to protect the system against the weather (rain, snow, etc.)



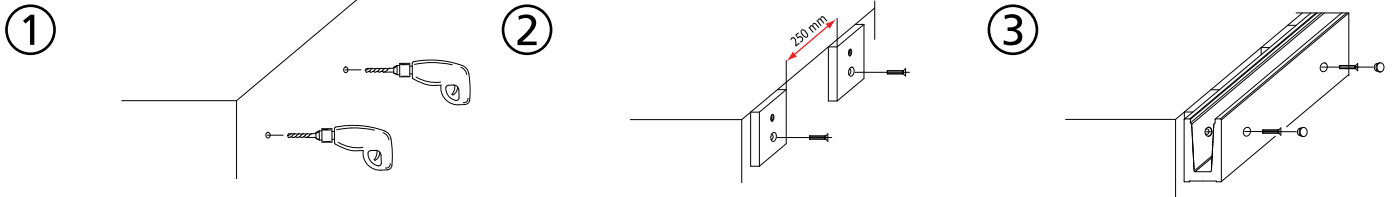
A - ASSEMBLING 2 kN



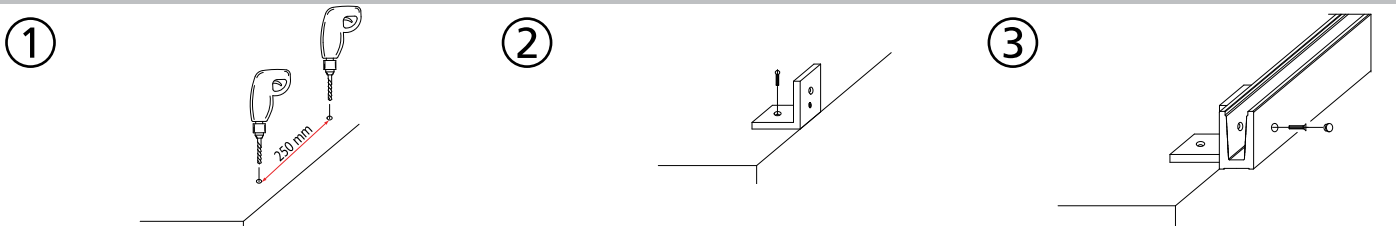
B - ASSEMBLING 2 kN



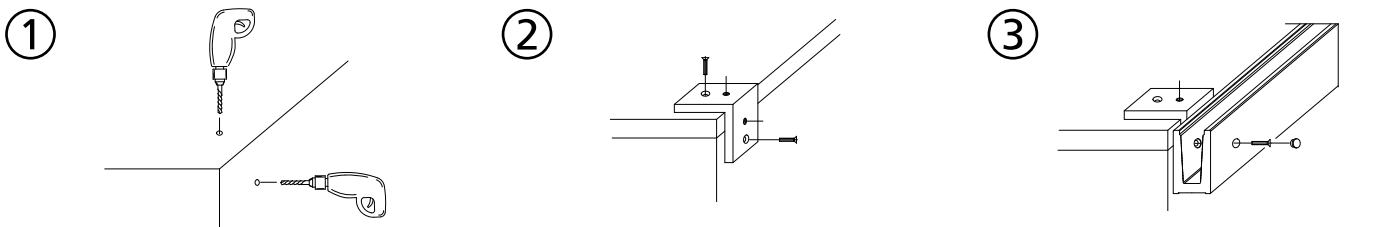
C - ASSEMBLING 3 kN



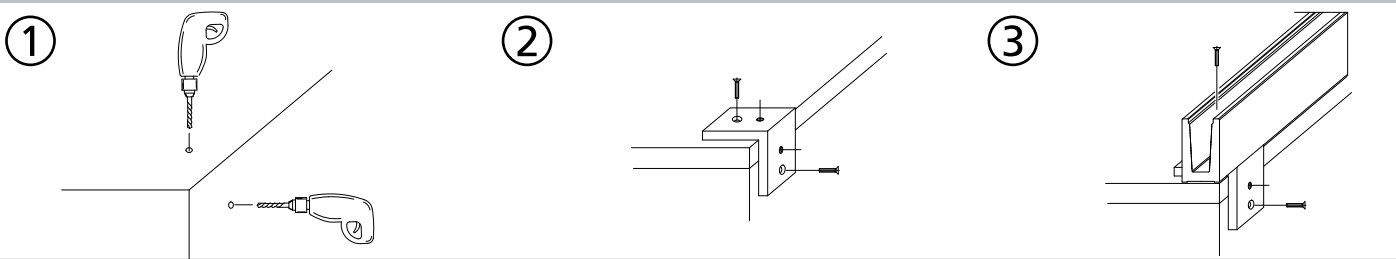
D - ASSEMBLING 3 kN



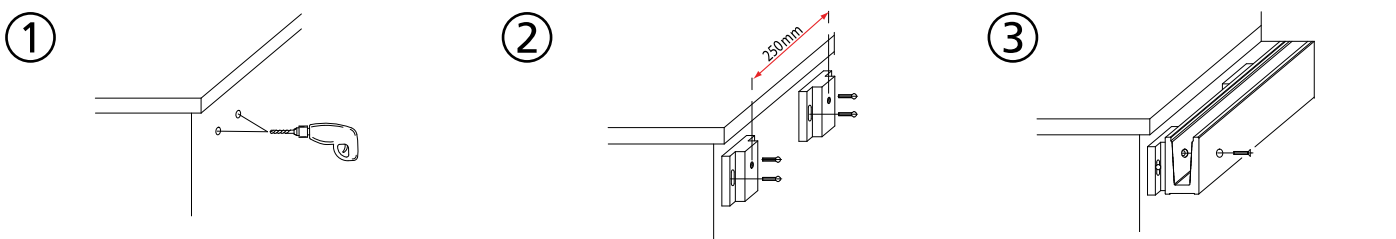
E - ASSEMBLING 3 kN



F - ASSEMBLING 3 kN



G - ASSEMBLING 3 kN



WARNING

Please retain this book - particularly the installation manual. Please read the instruction manual carefully before assembly and installation. Do not forget to act always in accordance with the laws of the intended country of installation. In special cases, please check local and national construction rules (For example: in Germany DIN 18065 and the related law: Bauo Bauordnungsdrehtes). Install each item as indicated in the relevant installation manual. Do not install or use the item if you have doubts concerning its installation. Do not use or install the product if you are missing any components. In such cases, please contact your local dealer or the manufacturer IAM Design.

REGULAR MAINTENANCE AND INSPECTION

Installation should be carried out by skilled fitters, following the instructions on the technical sheets supplied by IAM Design. Maintenance and regular inspections are necessary to maintain perfect functionality and efficiency. Again, inspections and maintenance operations should only be carried out by competent and skilled workers. Employment of fitters approved by the manufacturer is highly recommended. Otherwise IAM Design refuses all responsibility.

CLEANING

The use of stainless steel metallic parts guarantees resistance to different atmospheric conditions. Do not use acids, alkaline solutions or aggressive, abrasive or corrosive agents to clean the handrail system.

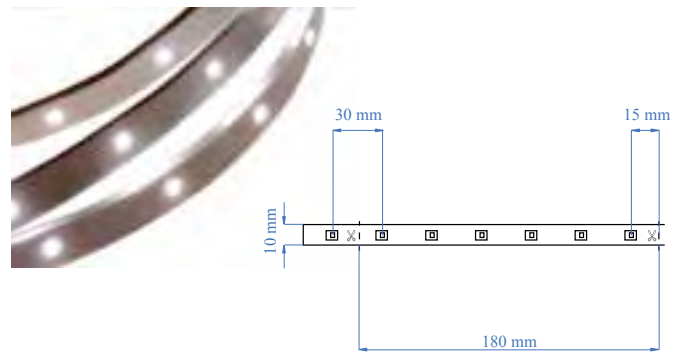
The LED Railing System is an innovative, system providing unique lighting in very close proximity to stairs and walkways. Eliminating the need to light an entire area, the LED Railing System helps to increase safety and security - at minimal cost - thanks to its low energy consumption.





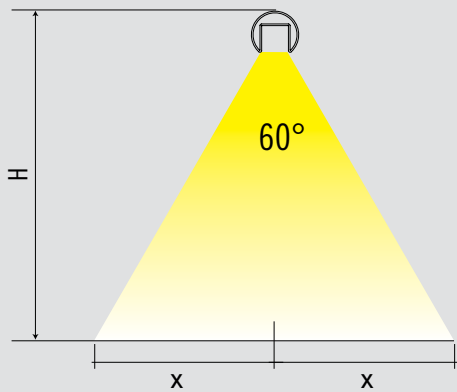
Steel handrail specially designed for the LED Railing System

Part No.		Application Ø A	Dimension B x C
AISI 304	AISI 316		
E1000424	E1100424	Tube Ø A 42.4 x 1.5mm x 6m	25 x 24mm



The revolutionary LED Cable: totally waterproof even underwater. Ultra-bright (over 180 lumens), ultra-thin, flexible, easy to install and cut. Virtually indestructible.

LED	Coil
ELED0001	Sold in coils of 25m



Input Voltage	24V
Input Current	154mA
Power	3.7 W/m
Weight	60 g/m
Life time	35,000h
Beam angle	110 C°
Luminouse/mt	198 lm
CRI	72
N. LED/18cm	6
Temperature range	-20 C° + 50 C°

LIGHT EXIT AND COLOUR DISTRIBUTION

H	X
1200mm	692mm
1100mm	635mm
1000mm	579mm
900mm	519mm
800mm	461mm



Part No.	Description
ELED0002	To connect the LED strip to the feeder



Part No.	Description
ELED0004	15cm flexible cable for joining two LED strips



Part No.	Description
ELED0003	To join two LED strips in linear formation

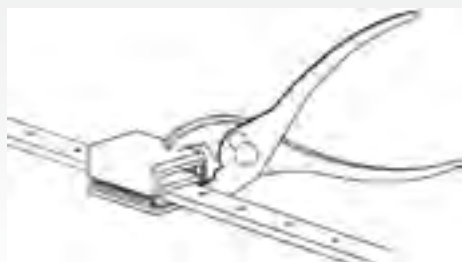


Part No.	Description
ELED0005	To be used on every installation. Protects the unconnected end of the strip

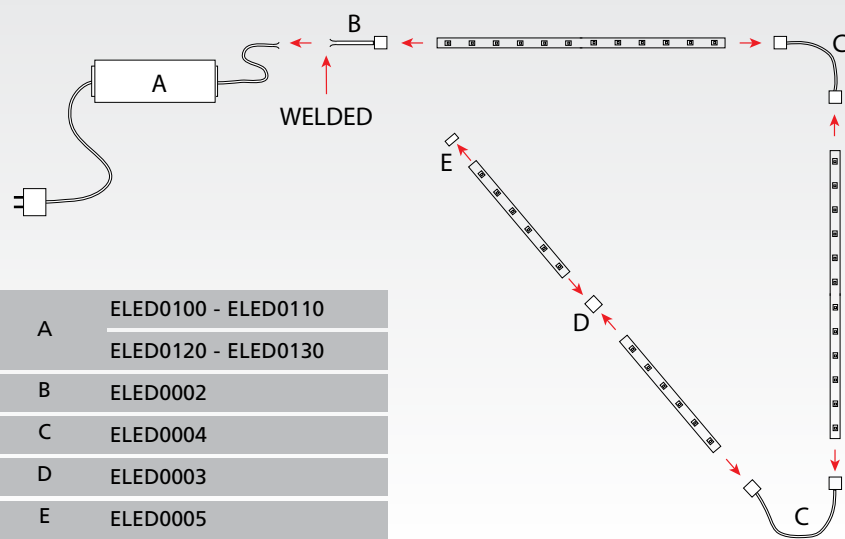
FEEDERS

Part No.	Dimensions	Input	Output	Power
ELED0100	190 x 52 x 37mm	100-240VAC 2.2A 50/60 Hz	+24V 4.2A	100W < 27m
ELED0110	162.5 x 42.5 x 32mm	100-240VAC 1.2A 50/60 Hz	+24V 2.5A	60W < 16m
ELED0120	148 x 40 x 30mm	100-240VAC 1.1A 50/60 Hz	+24V 1.5A	35W < 9m
ELED0130	140 x 30 x 20mm	200-240VAC 0.3A 50/60 Hz	+24V 0.75A	18W < 4m

Use a clamp to apply pressure on the connectors from above and below, in order to join the strip of LEDs.



INSTALLATION DIAGRAM

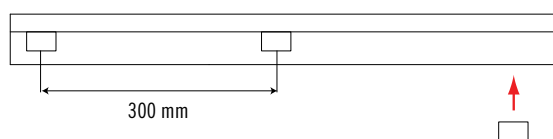
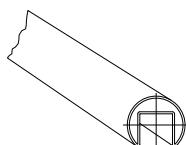


The simple LED railing system employs supporting brackets that can be easily attached to the slotted tube to attach the LED strips to the slotted handrail.

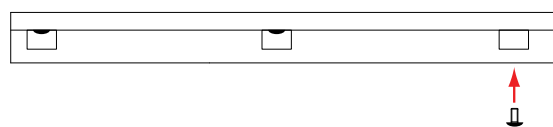
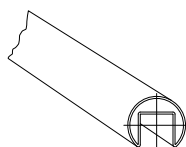


Part No.	Description
ELED0006	To attach the LED strips to the slotted handrail 10 pieces per box with screws

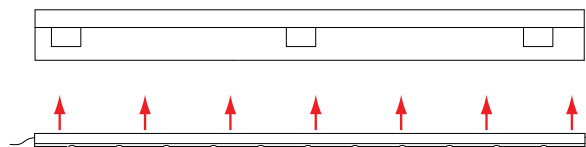
- ① Apply the ELED0006 fitting inside the slotted tube using the adhesive glue supplied. Place the locking brackets at a maximum distance of 300mm.



- ② For a more secure fixing, use the M3 screws directly anchored to the slotted handrail. IAM Design recommends making a pre-drilled hole before inserting the M3 screw.



- ③ Apply the LED lights to the bracket with a slight pressure.



TO JOIN THE SLOTTED TUBE TO NORMAL TUBE



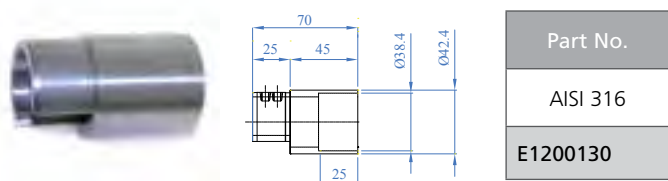
Part No.		Application Ø A
AISI 316		
E1200120		Tube Ø A 42.4mm

CONNECTOR



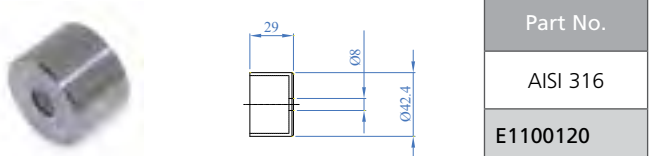
Part No.		Application Ø A
AISI 316		
E1200100		For tube Ø A 42.4 x 1.5mm

TO JOIN THE SLOTTED TUBE TO E450



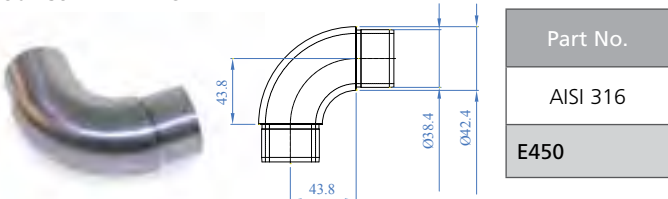
Part No.	
AISI 316	
E1200130	

TO LEAD CABLE TO WALL



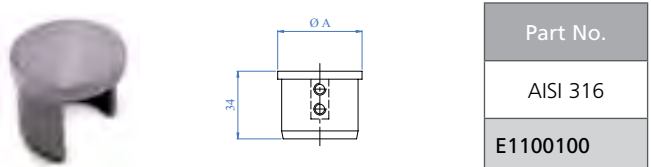
Part No.	
AISI 316	
E1100120	

90° CURVED ELBOW



Part No.	
AISI 316	
E450	

END CAP



Part No.	
AISI 316	
E1100100	

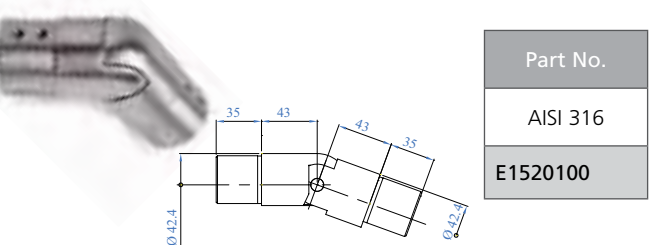
FLOOR ANCHORAGE



Part No.		Application Ø A
AISI 304	AISI 316	
E0213	E0213316	For tube Ø A 42.4 x 2.0mm

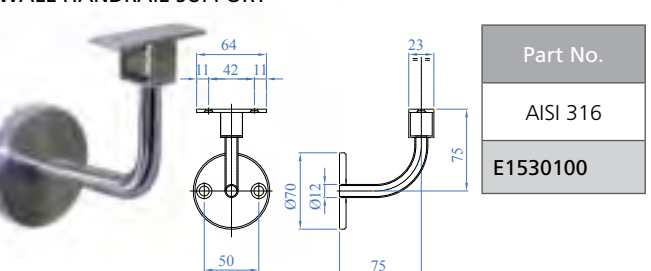
Countersunk holes and chamfered perimeter.

ARTICULATED CONNECTOR 25 - 55° DOWN FOR SLOTTED TUBE



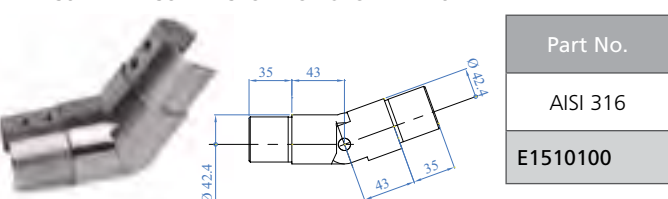
Part No.	
AISI 316	
E1520100	

WALL HANDRAIL SUPPORT



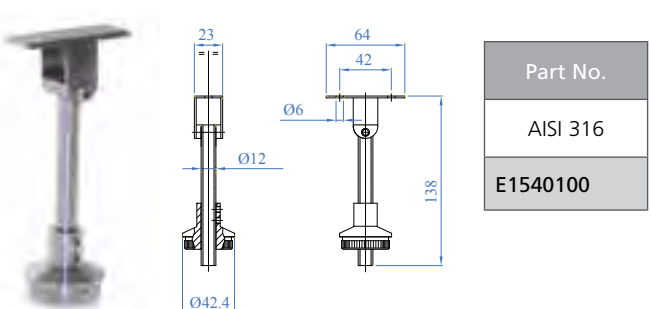
Part No.	
AISI 316	
E1530100	

ARTICULATED CONNECTOR FOR SLOTTED TUBE



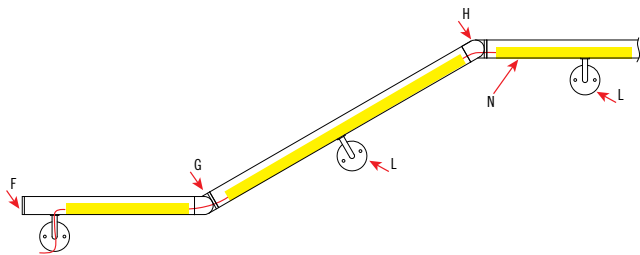
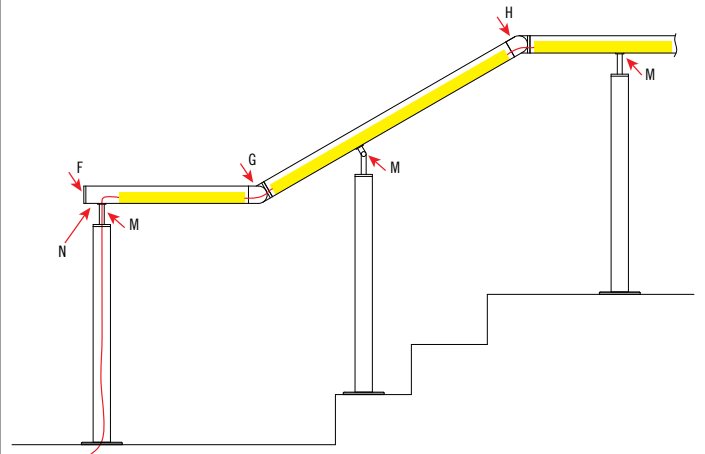
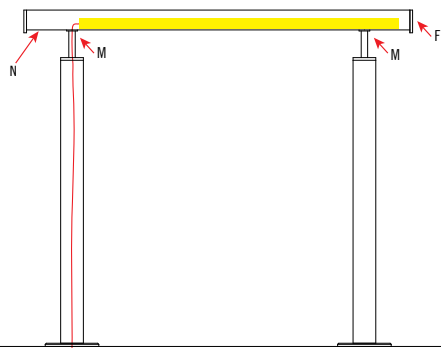
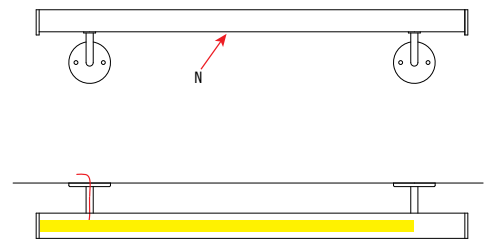
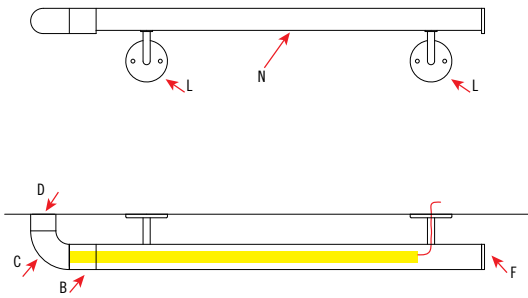
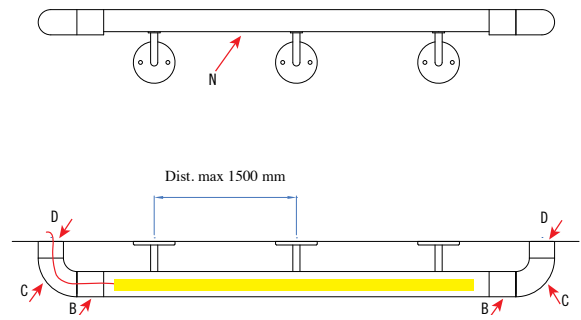
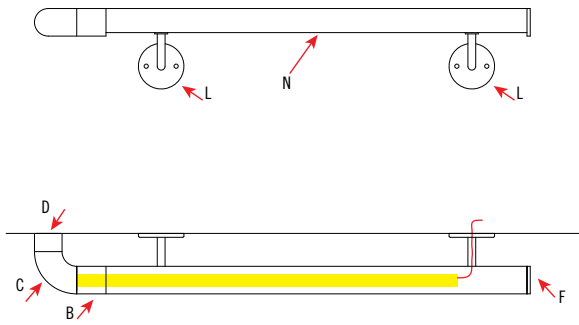
Part No.	
AISI 316	
E1510100	

HANDRAIL SUPPORT FOR NEWEL POST



Part No.	
AISI 316	
E1540100	

EXAMPLES OF APPLICATIONS

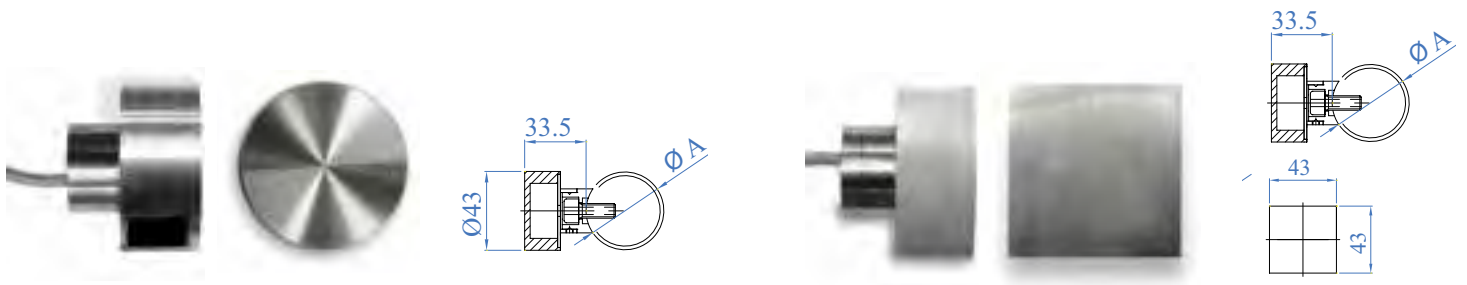


	ELED0001
A	E1200120
B	E1200130
C	E450
D	E1100120
E	E0213
F	E1100100
G	E1510100
H	E1520100
I	E1200100
L	E1530100
M	E1540100
N	E1000424 - E1100424

The POST LED SYSTEM integrates low-voltage LED lighting into any handrail system constructed with IAM Design products

It is a simple system to make railings and stairways safer in both indoor and outdoor applications.





Part No.	Application Ø A
AISI 316	
ELED1000	For tube Ø A 42.4 x 2.0mm
ELED1100	Flat face

Part No.	Application Ø A
AISI 316	
ELED2000	For tube Ø A 42.4 x 2.0mm
ELED2100	Flat face

1
Drill and thread M8

3
Install the rear anchor using the drilled screw included

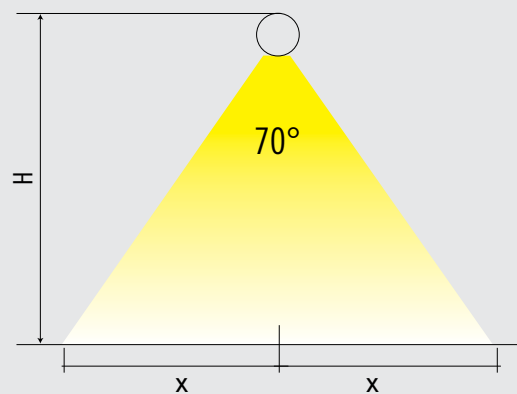
5
Installation complete

2
Insert the power cable into the screw hole and connect it to feeder

4
Fix the spotlight to its anchor by tightening the grain

H	X
1200 mm - 47 1/4"	840 mm - 33 1/16"
1100 mm - 43 1/4"	770 mm - 30 5/16"
1000 mm - 39 1/2"	700 mm - 27 9/16"
900 mm - 35 7/16"	630 mm - 24 25/32"
800 mm - 31 1/2"	560 mm - 22 1/16"
700 mm - 27 9/16"	490 mm - 19 9/32"
600 mm - 23 5/8"	420 mm - 16 17/32"
500 mm - 19 11/16"	350 mm - 13 25/32"
400 mm - 15 3/4"	280 mm - 11 1/32"
300 mm - 11 13/16"	210 mm - 8 1/4"
200 mm - 7 7/8"	140 mm - 5 1/2"

LIGHT SPREAD AND COLOUR DISTRIBUTION





The ROPE range provides an interesting and attractive alternative to systems based on tube or bar. The wire system is extremely modular and easy to install. It was originally used in naval and marine applications, but in recent years wire has played a major part in many modern architectural structures. The ROPE system is extremely easy to assemble and can create topical solutions that fit perfectly into any setting.

STAINLESS STEEL ROPE



Part No.	Rope	Min break load
AISI 316		
EF7X704	Ø 4mm	9.00 kN
EF7X705	Ø 5mm	14.00 kN
EF7X706	Ø 6mm	20.00 kN



Part No.	Rope	Min break load
AISI 316		
EF7X1904	Ø 4mm	8.50 kN
EF7X1905	Ø 5mm	14.00 kN
EF7X1906	Ø 6mm	20.00 kN

STOPPER FOR WIRE ROPE WITH SET SCREW



Part No.		Rope	X	A
AISI 303	AISI 316			
EA04	EA04316	Ø 4mm	M8	Ø 15mm
EA05	EA05316	Ø 5-6mm	M10	Ø 20mm

STOPPER WASHER FOR THREADED TERMINALS



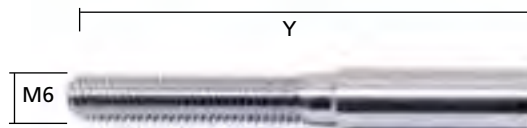
Part No.		For tube	Hole
AISI 303	AISI 316		
EB06	EB06316	Ø 33.7mm	Ø 6.5mm
EB061	EB061316	Ø 42.4mm	Ø 6.5mm
EB063	EB063316	Flat face	Ø 6.5mm
EB07	EB07316	Ø 33.7mm	Ø 8.5mm
EB071	EB071316	Ø 42.4mm	Ø 8.5mm
EB073	EB073316	Flat face	Ø 8.5mm

THREADED INSIDE TERMINALS



Part No.	Side	Rope	Dimension Y
AISI 316			
ETF04SX	Left	Ø 4mm	60mm
ETF04DX	Right	Ø 4mm	60mm
ETF05SX	Left	Ø 5mm	60mm
ETF05DX	Right	Ø 5mm	60mm
ETF06SX	Left	Ø 6mm	70mm
ETF06DX	Right	Ø 6mm	70mm

THREADED TERMINALS



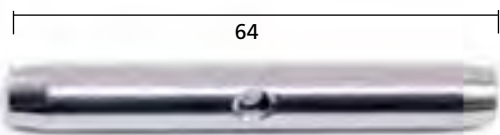
Part No.	Side	Rope	Dimension Y
AISI 316			
ETM04SX	Left	Ø 4mm	60mm
ETM04DX	Right	Ø 4mm	60mm
ETM05SX	Left	Ø 5mm	60mm
ETM05DX	Right	Ø 5mm	60mm
ETM06SX	Left	Ø 6mm	70mm
ETM06DX	Right	Ø 6mm	70mm

ADJUSTABLE CONNECTOR



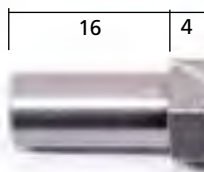
Part No.		Description
AISI 303	AISI 316	
ED05	ED05316	Adjustable ropes with 2 M6 thread

ADJUSTABLE ROPE JOINT/TENSIONER WITH TWO M6 THREADS



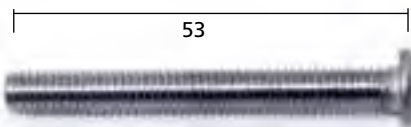
Part No.	Description
AISI 316	
ET06	Tightening connector with internal M6 thread right/left

FINIAL WITH HEXAGON THREAD



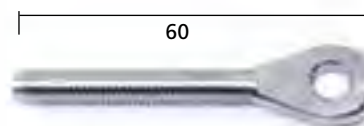
Part No.	Description
AISI 316	
ED06	Domed head nut, right hand M6 thread
ED06SX	Domed head nut, left hand M6 thread

FASTENING SCREWS



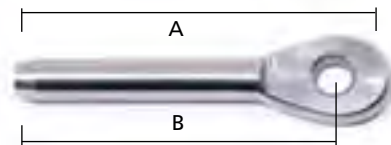
Part No.	Description
AISI 316	
ED07	Rounded head screw, M6 thread right
ED07SX	Rounded head screw, M6 thread left

THREADED EYE STUD M6



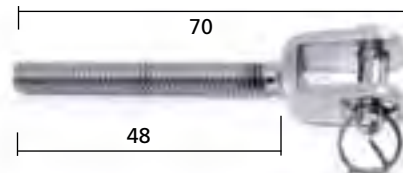
Part No.	Description
AISI 316	
ETFM06DX	Right hand thread
ETFM06SX	Left hand thread

EYE TERMINAL TO CRIMP



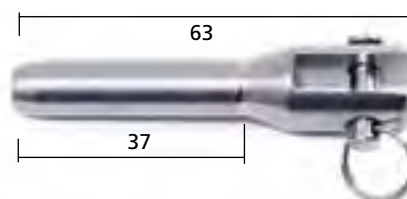
Part No.	Rope	Dimensions A x B
AISI 316		
ETFF04	Ø 4mm	55 x 48mm
ETFF05	Ø 5mm	55 x 48mm
ETFF06	Ø 6mm	89 x 74mm

WELDED THREADED FORK STUD M6



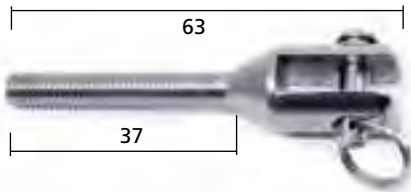
Part No.	Description
AISI 316	
ETM506DX	Right hand thread
ETM506SX	Left hand thread

FORK TERMINAL TO CRIMP



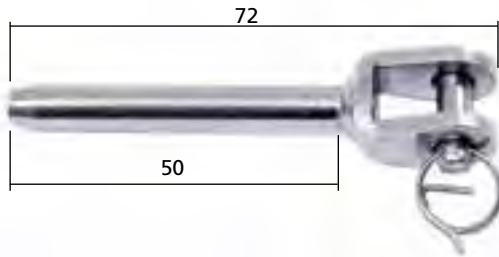
Part No.	Hole
AISI 316	
ETFT04	Ø 4mm
ETFT05	Ø 5mm
ETFT06	Ø 6mm

THREADED FORK STUD M6



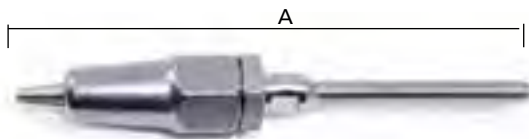
Part No.	Description
AISI 316	
ETMS06DX	Right hand thread
ETMS06SX	Left hand thread

WELDED FORK TERMINAL TO CRIMP



Part No.	Rope
AISI 316	
ETFS04	Ø 4mm
ETFS05	Ø 5mm
ETFS06	Ø 6mm

M6 SWAGELESS FORK TERMINAL



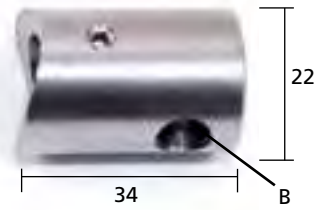
Part No.	Thread	Dimension A
AISI 316		
ETSM8	M6-M8	90mm
ETSM10	M6-M10	107mm
ETSM12	M6-M12	119mm

DOME HEAD TERMINAL FOR WIRE ROPE TO CRIMP



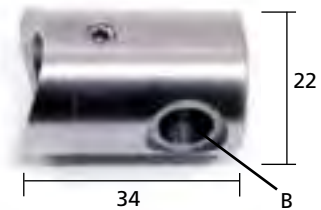
Part No.		Rope
AISI 303	AISI 316	
ETTB04304	ETTB04	Ø 4mm
ETTB05304	ETTB05	Ø 5mm
ETTB06304	ETTB06	Ø 6mm

SUPPORT FOR EXTERNAL WIRE ROPES WITH CRIMPED TERMINALS



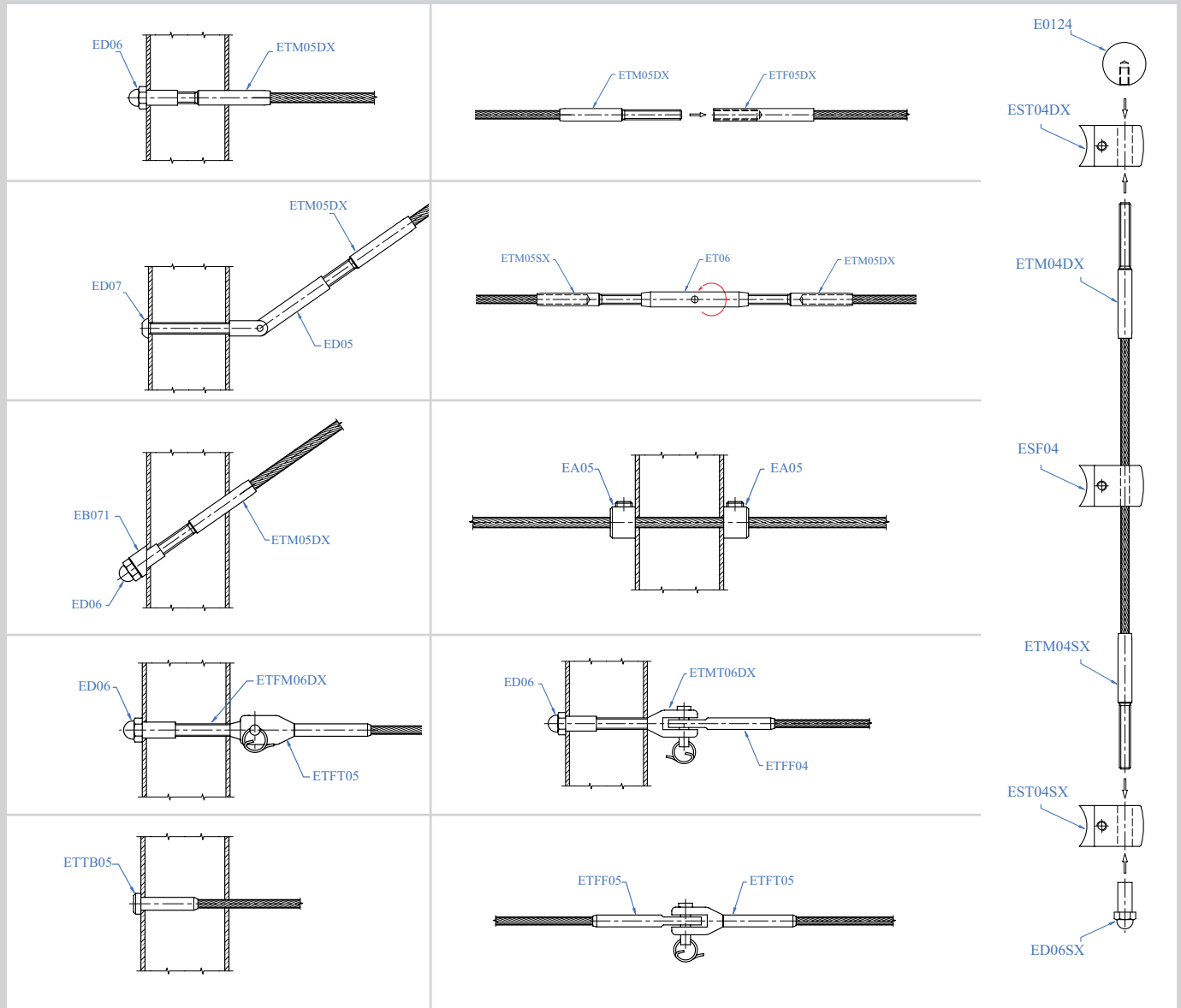
Part No.		For tube	Hole B	Rope B
AISI 303	AISI 316			
ESF04	ESF04316	Ø 33.7mm	Ø 4.5mm	Ø 4mm
ESF05	ESF05316	Ø 33.7mm	Ø 5.5mm	Ø 5mm
ESF06	ESF06316	Ø 33.7mm	Ø 6.5mm	Ø 6mm
ESF041	ESF041316	Ø 42.4mm	Ø 4.5mm	Ø 4mm
ESF051	ESF051316	Ø 42.4mm	Ø 5.5mm	Ø 5mm
ESF061	ESF061316	Ø 42.4mm	Ø 6.5mm	Ø 6mm
ESF043	ESF043316	Flat face	Ø 4.5mm	Ø 4mm
ESF053	ESF053316	Flat face	Ø 5.5mm	Ø 5mm
ESF063	ESF063316	Flat face	Ø 6.5mm	Ø 6mm
ESF08	ESF08316	Ø 33.7mm	Ø 8mm	Ø 4-5-6mm
ESF081	ESF081316	Ø 42.4mm	Ø 8mm	Ø 4-5-6mm
ESF083	ESF083316	Flat face	Ø 8mm	Ø 4-5-6mm

TERMINAL SUPPORT FOR EXTERNAL WIRE ROPE



Part No.		For tube	Rope B
AISI 303	AISI 316		
EST04DX	EST05DX	Ø 33.7mm	Ø 4-5-6mm
EST04SX	EST05SX	Ø 33.7mm	Ø 4-5-6mm
EST041DX	EST051DX	Ø 42.4mm	Ø 4-5-6mm
EST041SX	EST051SX	Ø 42.4mm	Ø 4-5-6mm
EST043DX	EST053DX	Flat face	Ø 4-5-6mm
EST043SX	EST053SX	Flat face	Ø 4-5-6mm

EXAMPLE OF APPLICATION



Products from the Grade 316 Mirror Polished range - together with Mirror Polished handrail tube - are the perfect choice for external use in coastal locations and for swimming pools, both indoors and out.

In such environments, an appropriate cleaning regime is highly recommended on an ongoing basis, as well as immediately after installation.



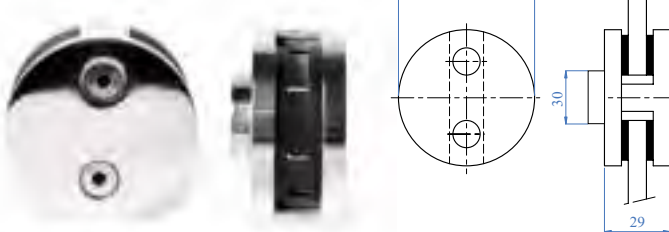
GLASS CLAMPS



FOR FULL RANGE OF MIRROR POLISHED STAINLESS STEEL GLASS CLAMPS SEE PAGES 6 & 7

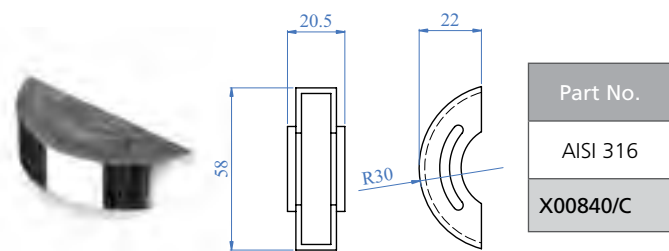
DA VINCI CLAMP SYSTEM

ROUND CLAMPS



Part No.	Glass Thickness
AISI 316	
X00840	A = 8mm

STAINLESS STEEL CLOSURE FOR ROUND CLAMPS



Part No.
AISI 316
X00840/C

MIRROR POLISHED TUBES



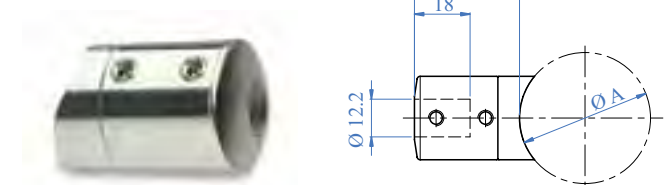
Part No.	Dimensions	Weight/Metre
AISI 316		
X4801	Ø 42.4 x 2.0mm	6.07 kg

MIRROR POLISHED ROUND BARS



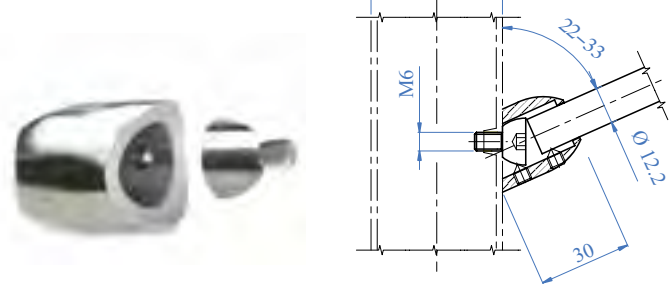
Part No.	Diameter	Weight/Metre
AISI 316		
X4851	Ø 12mm	2.66 kg

ROUND BAR HOLDERS



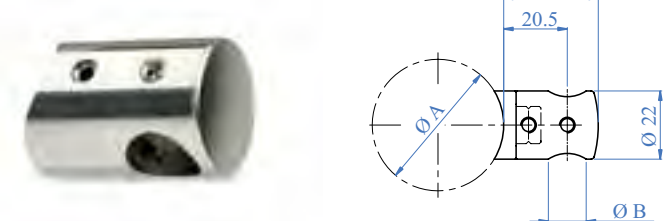
Part No.	Application Ø A
AISI 316	
X40650	For tube Ø A 42.4mm

ROUND BAR HOLDERS



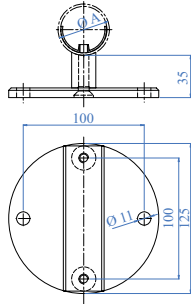
Part No.	Application Ø A
AISI 316	
X0069991316	For tube Ø A 42.4mm

ROUND BAR HOLDERS



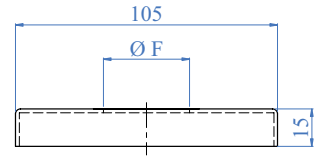
Part No.	Application Ø A	Hole
AISI 304	AISI 316	
X0069	X4042	For tube Ø A 42.4mm B = Ø 12.2mm through
X006910	X006910316	For tube Ø A 42.4mm B = Ø 10.2mm through

LATERAL ANCHORAGE



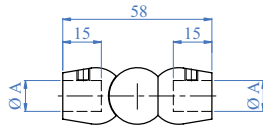
Part No.	Application $\varnothing A$
AISI 316	
X113316	For tube $\varnothing A$ 42.4 x 2.0mm

FLANGE CANOPIES



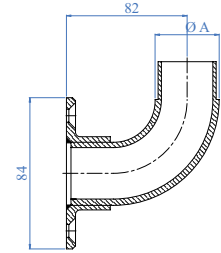
Part No.	Hole
AISI 316	
X4072	F = \varnothing 43mm

PIVOTING ROUND BAR CONNECTOR



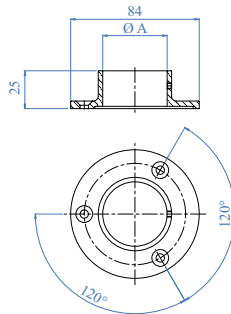
Part No.	For round bar
AISI 316	
X0070316	A = \varnothing 12mm

PIVOTING ROUND BAR CONNECTOR



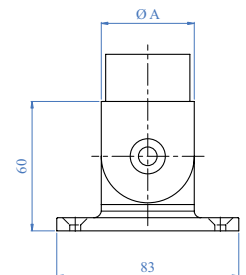
Part No.	Application $\varnothing A$
AISI 316	
X4561	For tube $\varnothing A$ 42.4 x 2.0mm

ANCHORAGES FOR HANDRAILS



Part No.	Application $\varnothing A$
AISI 316	
X456	For tube $\varnothing A$ 42.4mm

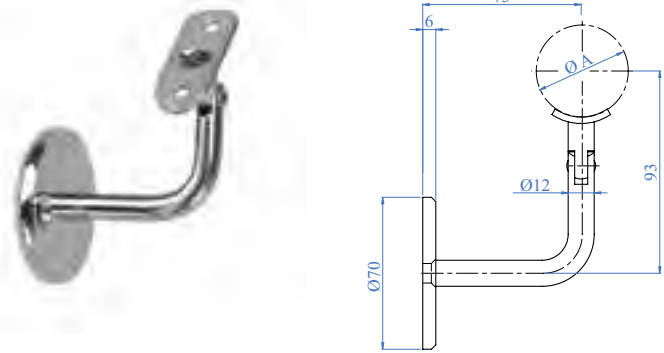
LATERAL ANCHORAGE



Part No.	Application $\varnothing A$
AISI 316	
X4483	For tube $\varnothing A$ 42.4mm

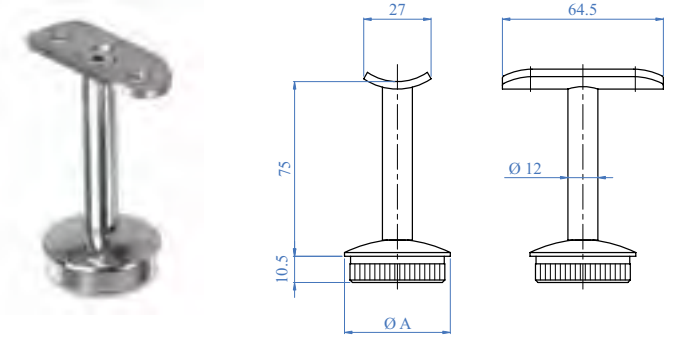


WALL HANDRAIL SUPPORT

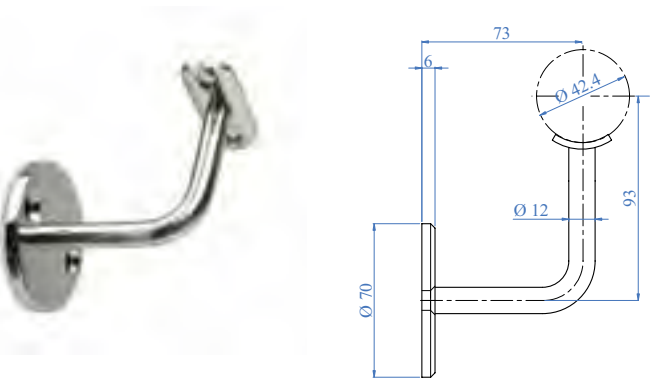


Part No.	Application Ø A
AISI 316	
X02231316	For tube Ø A 42.4mm

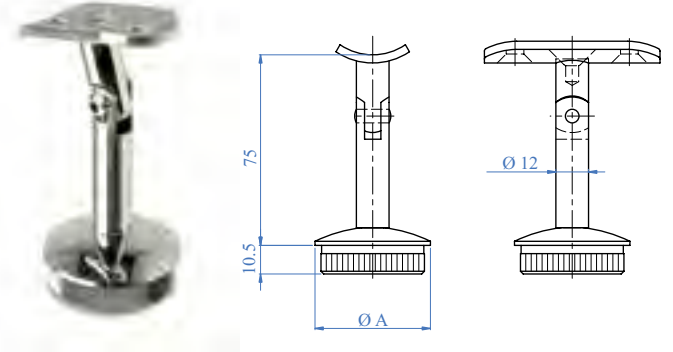
HANDRAIL SUPPORT



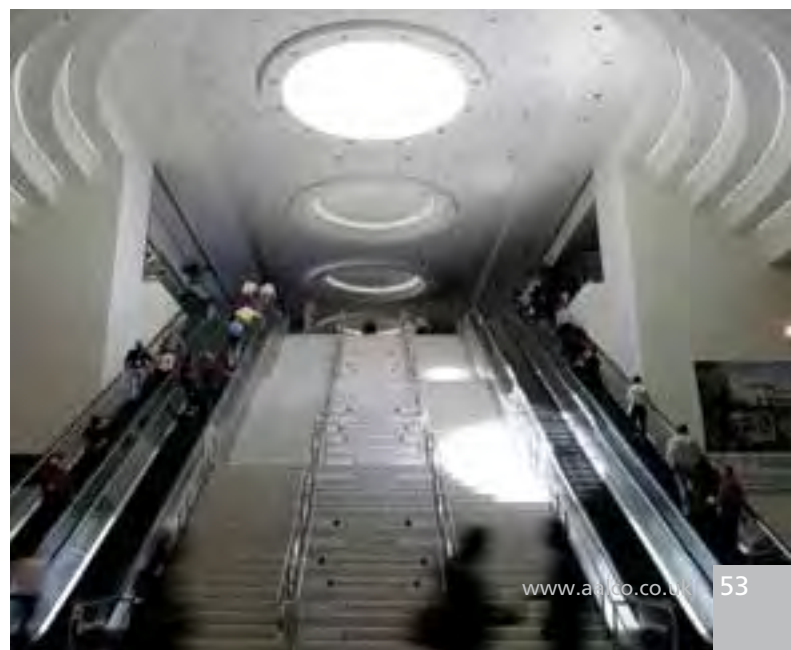
Part No.	Application Ø A
AISI 316	
X031/S1316	For tube Ø A 42.4 x 2.0mm



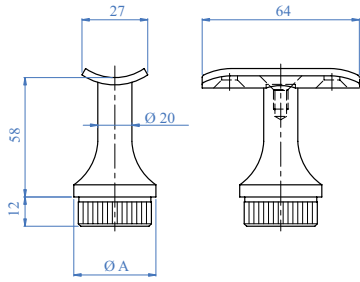
Part No.	Application Ø A
AISI 316	
X0223316	For tube Ø A 42.4mm



Part No.	Application Ø A
AISI 316	
X030/S316	For tube Ø A 42.4mm

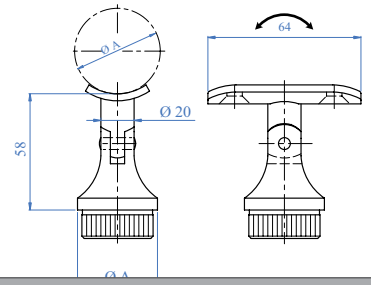


HANDRAIL SUPPORT

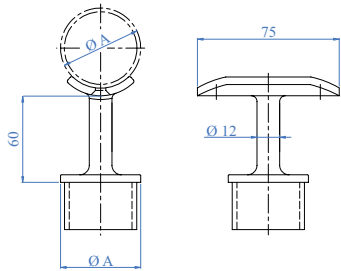


Part No.	Application Ø A
AISI 316	
X0102316	For tube Ø A 42.4 x 2.0mm

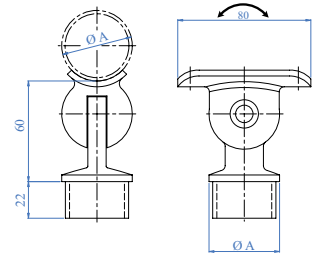
HANDRAIL SUPPORT



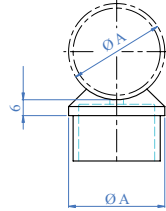
Part No.	Application Ø A
AISI 316	
X0104316	For tube Ø A 42.4 x 2.0mm



Part No.	Application Ø A
AISI 316	
X458	For tube Ø A 42.4 x 2.0mm

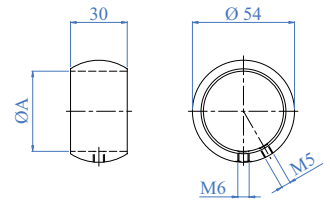


Part No.	Application Ø A
AISI 316	
X4581	For tube Ø A 42.4 x 2.0mm

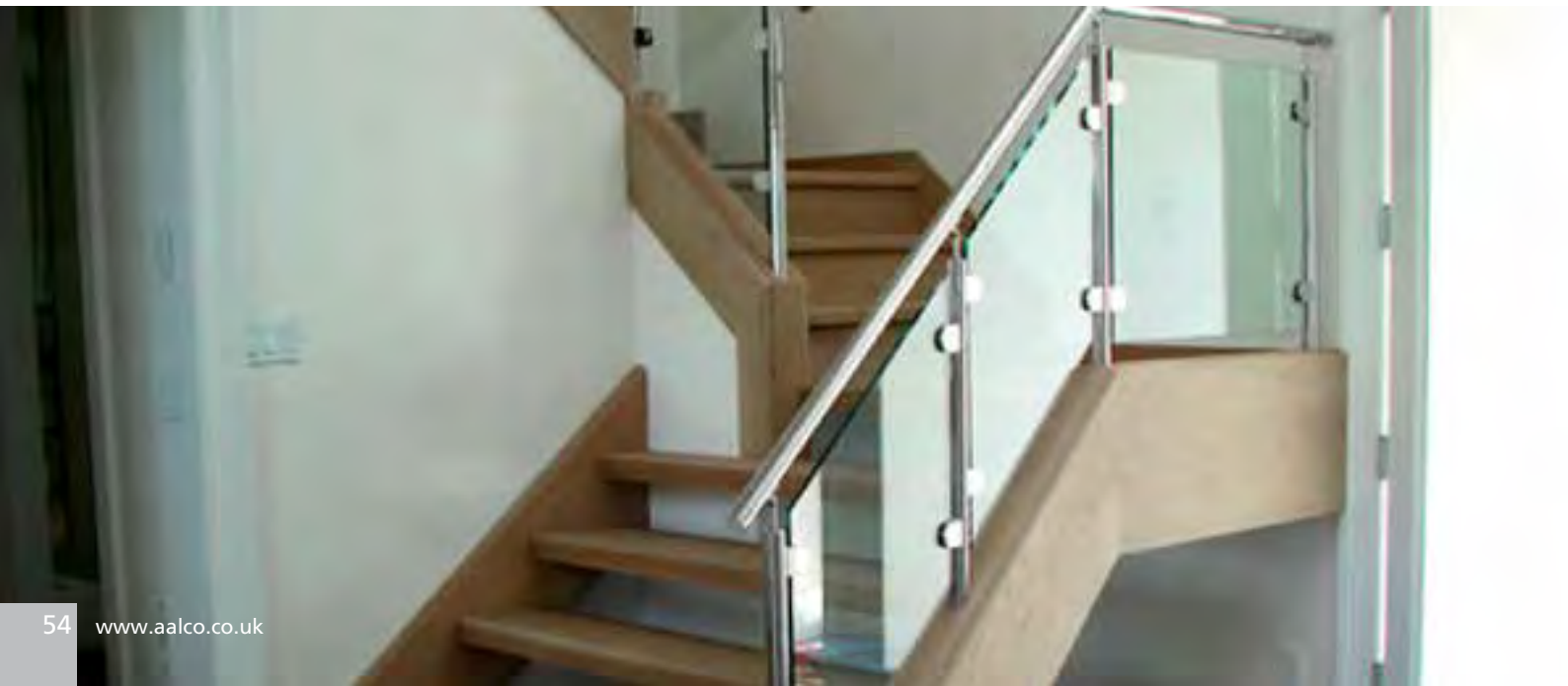


Part No.	Application Ø A
AISI 316	
X454	For tube Ø A 42.4 x 2.0mm

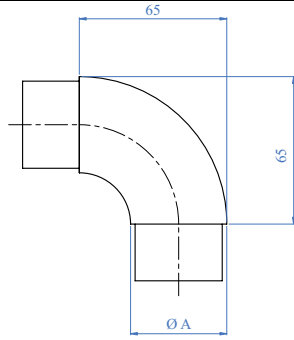
TUBE ADAPTER



Part No.	Application Ø A
AISI 316	
X468/424	For tube Ø A 42.4 x 2.0mm

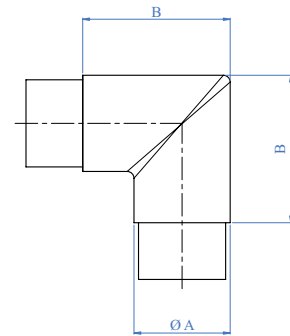


90° ELBOW



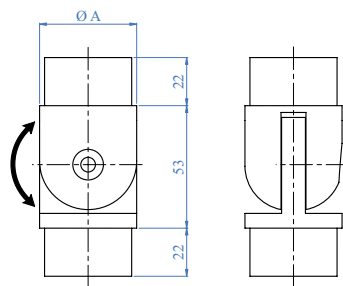
Part No.	Application Ø A
AISI 316	
X450	For tube Ø A 42.4 x 2.0mm

90° ANGLE



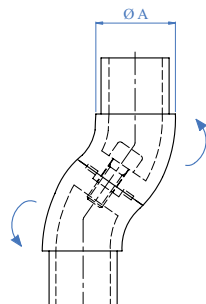
Part No.	Application Ø A
AISI 316	
X451	For tube Ø A 42.4 x 2.0mm

PIVOTING CONNECTOR



Part No.	Application Ø A
AISI 316	
X446	For tube Ø A 42.4 x 2.0mm

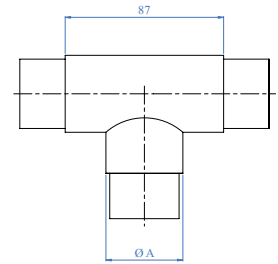
ARTICULATED ELBOW



Part No.	Application Ø A
AISI 316	
X4471	For tube Ø A 42.4 x 2.0mm

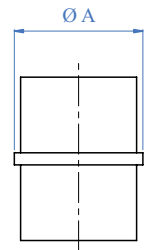
TUBE FITTINGS

3 WAY FLUSH "T"



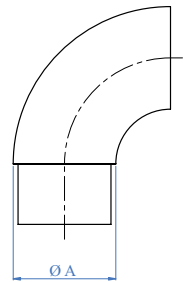
Part No.	Application Ø A
AISI 316	
X453	For tube Ø A 42.4 x 2.0mm

TUBE CONNECTOR



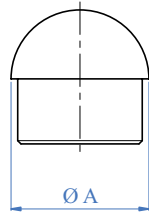
Part No.	Application Ø A
AISI 316	
X455	For tube Ø A 42.4 x 2.0mm

90° BEND END CAP

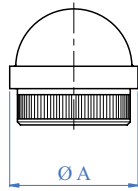


Part No.	Application Ø A
AISI 316	
X452	For tube Ø A 42.4 x 2.0mm

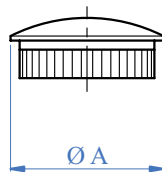
END CAPS



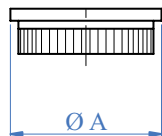
Part No.	Application Ø A
AISI 316	
X465	For tube Ø A 42.4 x 2.0mm



Part No.	Application Ø A
AISI 316	
X011316	For tube Ø A 42.4 x 2.0mm



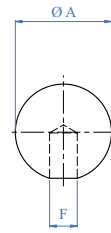
Part No.	Application Ø A
AISI 316	
X0119316	For tube Ø A 42.4 x 2.0mm



Part No.	Application Ø A
AISI 316	
X01151316	For tube Ø A 42.4 x 2.0mm

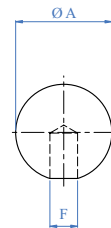
FINIALS

SPHERE FINIALS



Part No.	Dimensions	Hole
AISI 316		
X4308	A = Ø 25mm blind hole	F = Ø 12.2mm
X4309	A = Ø 25mm blind hole	F = Ø 14.2mm
X4311	A = Ø 25mm hole	F = Ø 12.2mm
X4312	A = Ø 25mm hole	F = Ø 12.2mm

HOLLOW SPHERE FINIALS

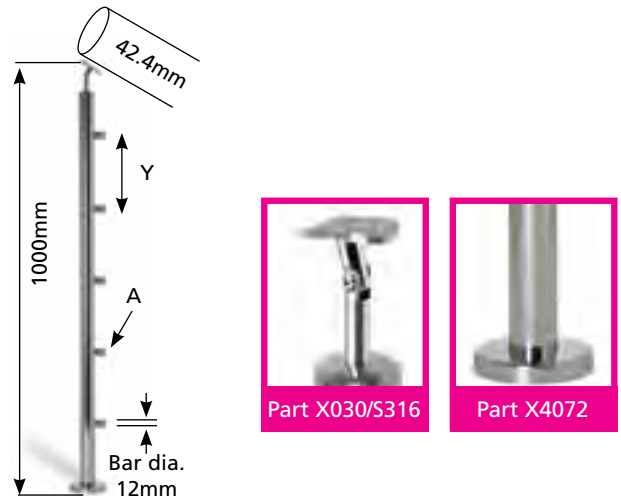
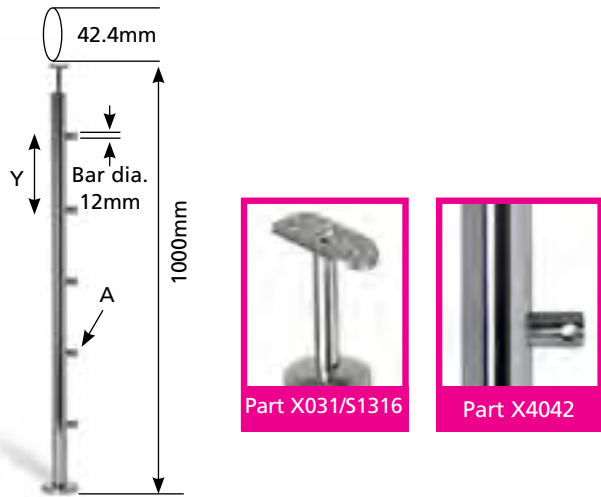


Part No.	Dimensions	Thread
AISI 316		
E0701/HP	A = Ø 30mm	M6
E0702/HP	A = Ø 40mm	M6
E071/HP	A = Ø 60mm	M8
E072/HP	A = Ø 70mm	M8
E073/HP	A = Ø 80mm	M8
E074/HP	A = Ø 90mm	M8
E075/HP	A = Ø 100mm	M10
E076/HP	A = Ø 120mm	M10

All newel posts shown on pages 57 and 58 are available in both 316 and 304 Grade. These parts are also available in Satin Polished (240 Grit). Part numbers for these are as below, but replacing the 'X' with an 'E'.

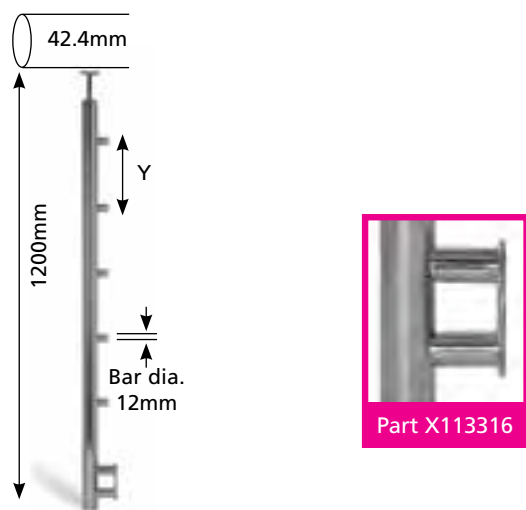
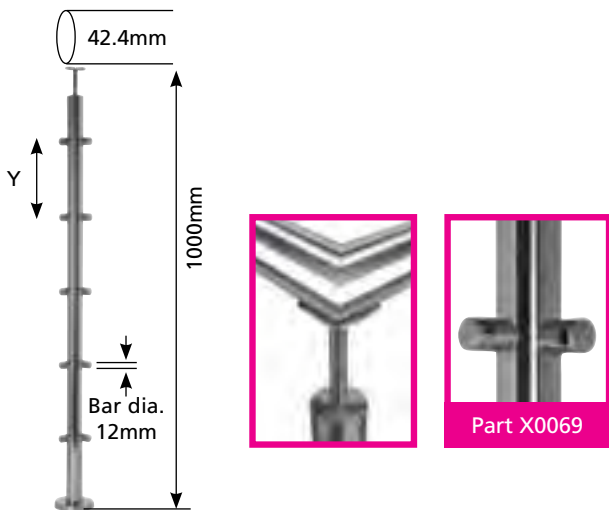
For example the Satin Polished version of part XM4421205F has the reference number EM4421205F.

If you can't find what you need, we can make it specially for you!



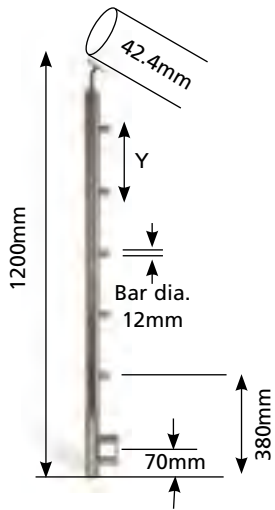
Part No.		For tube	No. A	Y
AISI 304	AISI 316			
XM2421205F	XM4421205F	Ø 42.4 x 2.0mm	5	170mm
XM2421207F	XM4421207F	Ø 42.4 x 2.0mm	7	125mm

Part No.		For tube	No. A	Y
AISI 304	AISI 316			
XM2421205S	XM4421205S	Ø 42.4 x 2.0mm	5	170mm
XM2421207S	XM4421207S	Ø 42.4 x 2.0mm	7	125mm

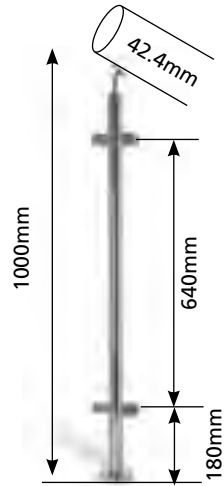


Part No.		For tube	No. A	Y
AISI 304	AISI 316			
XM2421205F90	XM4421205F90	Ø 42.4 x 2.0mm	5	170mm
XM2421207F90	XM4421207F90	Ø 42.4 x 2.0mm	7	125mm

Part No.		For tube	No. A	Y
AISI 304	AISI 316			
XL2421205F	XL4421205F	Ø 42.4 x 2.0mm	5	170mm
XL2421207F	XL4421207F	Ø 42.4 x 2.0mm	7	125mm



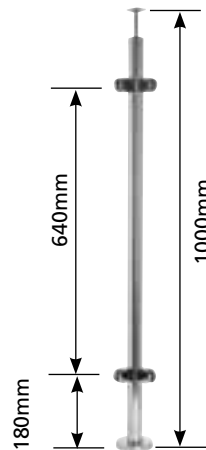
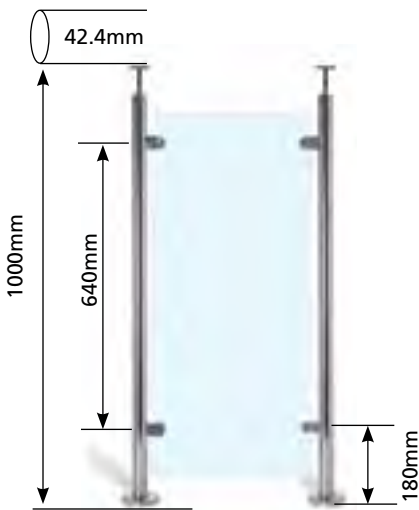
Part X113316



Part X030/S316

Part No.		For tube	No. A	Y
AISI 304	AISI 316			
XL2421205S	XL4421205S	Ø 42.4 x 2.0mm	5	170mm
XL2421207S	XL4421207S	Ø 42.4 x 2.0mm	7	125mm

Part No.		For tube	Pivoting handrail support
AISI 304	AISI 316		
XP24204PF	XP44204PF	Ø 42.4 x 2.0mm	Yes



Part No.		For tube	Pivoting handrail support
AISI 304	AISI 316		
XP24202PF	XP44202PF	Ø 42.4 x 2.0mm	No
XP24202PS	XP44202PS	Ø 42.4 x 2.0mm	Yes

Part No.		For tube	Pivoting handrail support
AISI 304	AISI 316		
XP24204PF90	XP44204PF90	Ø 42.4 x 2.0mm	No

PROTECTION SPRAY



Part No.	Application	Size
E4052	Protection spray	500 ml

Leaves a thin, antistatic and water-repellent coat on the treated metallic surfaces. It is recommended on finished products.

DEGREASING SPRAY



Part No.	Application	Size
E4051	Cleaning spray	500 ml

Spray for cleaning all metal surfaces to be glued

STAINLESS STEEL ADHESIVE



Spray for cleaning all metal surfaces to be glued

Consumption per bonding circa 1ml

Ø (mm)	42.4	48.3
Glueing connections per 1 bottle (50 ml)	60	50

Part No.	Application	Size
E4054	High glueing adhesive	50 ml

INNOSOFT & INNOPROTECT



Part No.	Quantity
Innosoft	500, 250 & 100 ml bottle
Innoprotect	500, 250 & 100 ml bottle
Application Sponge	1

Kit to clean and passivate stainless steel surfaces, removing oxides, rust contamination and stains.



Part No.	Description	Page
E0069	CROSSBAR HOLDER, INTERMEDIATE	16
E006916	CROSSBAR HOLDER, INTERMEDIATE	16
E006920	CROSSBAR HOLDER, INTERMEDIATE FLAT BACK	16
E00820	ROUND CLAMPS FOR 2 PIECE GLASS	8
E00820316	ROUND CLAMPS FOR 2 PIECE GLASS	8
E00821	ROUND CLAMPS FOR 2 PIECE GLASS FLAT BACK	8
E00821316	ROUND CLAMPS FOR 2 PIECE GLASS FLAT BACK	8
E00830	ROUND CLAMPS FOR 1 PIECE GLASS	8
E00830316	ROUND CLAMPS FOR 1 PIECE GLASS FLAT BACK	8
E00831	ROUND CLAMPS FOR 1 PIECE GLASS FLAT BACK	8
E00831316	ROUND CLAMPS FOR 1 PIECE GLASS	8
E00840	ROUND CLAMPS - DA VINCI	12
E00840/C	STAINLESS STEEL CLOSURE FOR ROUND CLAMPS	12
E00840/R1	RUBBER FOR ROUND GLASS CLAMPS	12
E00840/R2	RUBBER FOR ROUND GLASS CLAMPS	12
E00840/R3	RUBBER FOR ROUND GLASS CLAMPS	12
E00840/R4	RUBBER FOR ROUND GLASS CLAMPS	12
E00840/R5	RUBBER FOR ROUND GLASS CLAMPS	12
E00842	ROUND CLAMPS - DA VINCI	12
E00843	ADAPTOR FOR ROUND CLAMPS FLAT BACK	12
E00844	ADAPTOR FOR ROUND CLAMPS	12
E00995	SELF-SUPPORTING GLASS CLAMPS	8
E00996	SELF-SUPPORTING GLASS CLAMPS	8
E00997	SELF SUPPORTING ROUND GLASS CLAMP	12
E0102	HANDRAIL BRACKET WITH END CAP FOR TUBE	21
E0102316	HANDRAIL BRACKET WITH END CAP FOR TUBE	21
E0104	HANDRAIL BRACKET WITH SCREW AND END CAP FOR TUBE	21
E0104316	HANDRAIL BRACKET WITH SCREW AND END CAP FOR TUBE	21
E01151	END CAPS	19
E01151/26	END CAPS	19
E01152	END CAPS	19
E01152/26	END CAPS	19
E01193	CONNECTORS	23
E011931	CONNECTORS	23
E011931316	CONNECTORS	23
E01193316	CONNECTORS	23
E01194	CONNECTORS	23
E011940	CONNECTORS	23
E011940316	CONNECTORS	23
E011941	CONNECTORS	23
E011941316	CONNECTORS	23
E011943	CONNECTORS	23
E01194316	CONNECTORS	23
E011943316	CONNECTORS	23
E011944	CONNECTORS	23
E0119441	CONNECTORS	23
E011944316	CONNECTORS	23
E011944316	CONNECTORS	23
E011945	CONNECTORS	23
E0119451	CONNECTORS	23

Part No.	Description	Page
E0119451316	CONNECTORS	23
E011945316	CONNECTORS	23
E011946	FITTINGS FOR HANDRAIL	24
E011946316	FITTINGS FOR HANDRAIL	24
E01194617	FITTINGS FOR HANDRAIL	24
E011947316	FITTINGS FOR HANDRAIL	24
E011948	FITTINGS FOR HANDRAIL	24
E011948316	FITTINGS FOR HANDRAIL	24
E01195100	END CAPS HANDRAIL HOLDERS	24
E01196100	END CAPS HANDRAIL HOLDERS	24
E01197	MOUNTING PLATES	24
E011971	90° MOUNTING PLATES	24
E011971316	90° MOUNTING PLATES	24
E011972	MOUNTING PLATES	24
E011972316	MOUNTING PLATES	24
E011973	90° MOUNTING PLATES	24
E01197316	MOUNTING PLATES	24
E011973316	90° MOUNTING PLATES	24
E011974	45° MOUNTING PLATES	24
E011974316	45° MOUNTING PLATES	24
E011975	45° MOUNTING PLATES	24
E011975316	45° MOUNTING PLATES	24
E011976	MOUNTING PLATES FLAT BACK	24
E011976316	MOUNTING PLATES FLAT BACK	24
E0213	FLOOR ANCHORAGE	41
E0213316	FLOOR ANCHORAGE	41
E0214316	FLOOR BASE	17
E0214316/26	FLOOR BASE	17
E02195100	END CAPS HANDRAIL HOLDERS	24
E02196100	END CAPS HANDRAIL HOLDERS	24
E022/S316	WALL SUPPORT	21
E02230	WALL SUPPORT	20
E02232	WALL SUPPORT	20
E030/S316	HANDRAIL HOLDER ADJUSTABLE	20
E030/S316/26	HANDRAIL HOLDER ADJUSTABLE	20
E0302316	HANDRAIL HOLDER ADJUSTABLE	20
E0302316/26	HANDRAIL HOLDER ADJUSTABLE	20
E031/S1316	HANDRAIL HOLDER RIGID	20
E031/S316/26	HANDRAIL HOLDER RIGID	20
E0312316	HANDRAIL HOLDER RIGID	20
E0312316/26	HANDRAIL HOLDER RIGID	20
E040300	HANDRAIL BRACKET WITH SCREW AND END CAP FOR TUBE	21
E040310	HANDRAIL BRACKET WITH SCREW AND END CAP FOR TUBE	21
E040500	HANDRAIL BRACKET WITH END CAP FOR TUBE	22
E040510	HANDRAIL BRACKET WITH END CAP FOR TUBE	22
E040700	HANDRAIL BRACKET WITH SCREW AND END CAP FOR TUBE	22
E040710	HANDRAIL BRACKET WITH SCREW AND END CAP FOR TUBE	22
E040900	HANDRAIL BRACKET WITH END CAP FOR TUBE	22
E040910	HANDRAIL BRACKET WITH END CAP FOR TUBE	22
E041100	HANDRAIL BRACKET WITH SCREW AND END CAP FOR TUBE	22

Part No.	Description	Page
E041110	HANDRAIL BRACKET WITH SCREW AND END CAP FOR TUBE	22
E041300	HANDRAIL BRACKET WITH END CAP FOR TUBE	22
E041310	HANDRAIL BRACKET WITH END CAP FOR TUBE	22
E041400	HANDRAIL SUPPORT ELEMENTS - RIGID	22
E041410	HANDRAIL SUPPORT ELEMENTS - ADJUSTABLE	23
E041500	HANDRAIL SUPPORT ELEMENTS - RIGID	22
E041510	HANDRAIL SUPPORT ELEMENTS - ADJUSTABLE	23
E0700316	DISC COUNTERSUNK HOLES AND CHAMFERED PERIMETER	17
E0701/HP	HOLLOW SPHERE FINIALS	56
E0702/HP	HOLLOW SPHERE FINIALS	56
E071/HP	HOLLOW SPHERE FINIALS	56
E072/HP	HOLLOW SPHERE FINIALS	56
E073/HP	HOLLOW SPHERE FINIALS	56
E074/HP	HOLLOW SPHERE FINIALS	56
E075/HP	HOLLOW SPHERE FINIALS	56
E076/HP	HOLLOW SPHERE FINIALS	56
E1000424	SLOTTED TUBE	25/38
E100483	SLOTTED TUBE	25
E1100100	END CAPS	25/41
E1100110	END CAPS	25
E1100120	TO LEAD CABLE TO WALL	41
E1100424	SLOTTED TUBE	25/38
E1100483	SLOTTED TUBE	25
E11200006	GLASS CLAMP FLAT BACK	6
E11200007	GLASS CLAMP FLAT BACK	6
E11200008	GLASS CLAMP FLAT BACK	6
E11200009	GLASS CLAMP FLAT BACK	6
E11200010	GLASS CLAMP FLAT BACK	6
E11200044	GLASS CLAMP FLAT BACK	6
E11204206	GLASS CLAMP	6
E11204207	GLASS CLAMP	6
E11204208	GLASS CLAMP	6
E11204209	GLASS CLAMP	6
E11204210	GLASS CLAMP	6
E11204244	GLASS CLAMP	6
E11204806	GLASS CLAMP	6
E11204807	GLASS CLAMP	6
E11204808	GLASS CLAMP	6
E11204809	GLASS CLAMP	6
E11204810	GLASS CLAMP	6
E11204844	GLASS CLAMP	6
E11400013	GLASS CLAMP FLAT BACK	6
E11404213	GLASS CLAMP	6
E11404813	GLASS CLAMP	6
E11500010	GLASS CLAMP FLAT BACK	7
E11500011	GLASS CLAMP FLAT BACK	7
E11500012	GLASS CLAMP FLAT BACK	7
E11500013	GLASS CLAMP FLAT BACK	7
E11504210	GLASS CLAMP	7
E11504211	GLASS CLAMP	7

Part No.	Description	Page
E11504212	GLASS CLAMP	7
E11504213	GLASS CLAMP	7
E11504810	GLASS CLAMP	7
E11504811	GLASS CLAMP	7
E11504812	GLASS CLAMP	7
E11504813	GLASS CLAMP	7
E116	LATERAL BASE 304	18
E118	LATERAL BASE 304	18
E1200100	CONNECTOR	25/41
E1200110	CONNECTOR	25
E1200120	TO JOIN THE SLOTTED TUBE TO NORMAL TUBE	41
E1200130	TO JOIN THE SLOTTED TUBE TO E450	41
E1400100	90° ANGLE - HORIZONTAL	25
E1400110	90° ANGLE - HORIZONTAL	25
E1500100	90° ANGLE - HORIZONTAL	25
E1500110	90° ANGLE - HORIZONTAL	25
E1500300	BRACKET	25
E1500310	BRACKET	25
E1500400	BRACKET	25
E1500410	BRACKET	25
E1500500	BRACKET	25
E1500510	BRACKET	25
E1510100	ARTICULATED CONNECTOR FOR SLOTTED TUBE	41
E1520100	ARTICULATED CONNECTOR 25 - 55° DOWN FOR SLOTTED TUBE	41
E1530100	WALL HANDRAIL SUPPORT	41
E1540100	HANDRAIL SUPPORT FOR NEWEL POST	41
E1600100	FLOOR FIXING CHANNEL END ACCESSORIES	28
E1600500	FLOOR FIXING CHANNEL END ACCESSORIES	28
E1600600	FLOOR FIXING CHANNEL END ACCESSORIES	28
E1600700	FLOOR FIXING CHANNEL END ACCESSORIES	28
E1700200	WALL FIXING CHANNEL END ACCESSORIES	28
E1700300	WALL FIXING CHANNEL END ACCESSORIES	28
E1700500	WALL FIXING CHANNEL END ACCESSORIES	29
E1700600	WALL FIXING CHANNEL END ACCESSORIES	29
E1700700	WALL FIXING CHANNEL END ACCESSORIES	29
E1800100	BASE FITTING	33
E1800200	WALL FIXING ELEMENT	33
E1800300	SPACED WALL FIXING ELEMENT	33
E1800400	WALL OR FLOOR FIXING ELEMENT	33
E1800500	FLOOR FIXING ELEMENT	33
E1800600	CLOSING DEVICES FOR GLASS U EXTRA STRONG	34
E1800610	CLOSING DEVICES FOR GLASS U EXTRA STRONG	34
E1800620	CLOSING GASKETS FOR GLASS U EXTRA STRONG	34
E1800700	CLOSING DEVICES FOR GLASS U EXTRA STRONG	34
E1800710	CLOSING DEVICES FOR GLASS U EXTRA STRONG	34
E1800720	CLOSING GASKETS FOR GLASS U EXTRA STRONG	34
E1800800	HOLE CAP FOR PROFILE E1800100	33
E1800900	BACK HOLE CAP FOR PROFILE E1800100	33
E1900100	RAILS	26
E1900110	RAILS	26

Part No.	Description	Page
E1900200	RAILS	26
E1900210	RAILS	26
E1900300	RAILS	26
E1900310	RAILS	26
E1900400	RAILS	26
E1900410	RAILS	26
E1900500	RAILS	26
E1900510	RAILS	26
E1900600	RAILS	26
E1900610	RAILS	26
E1999100	RUBBER INSERT	25
E1999200	RUBBER INSERT	25
E1999300	RUBBER INSERT	25
E1999400	RUBBER INSERT	25
E1999500	RUBBER INSERT	25
E1999650	RUBBER INSERT	25
E1999800	CLOSING DEVICES FOR GLASS U	29
E1999810	CLOSING DEVICES FOR GLASS U	29
E1999830	CLOSING DEVICES FOR GLASS U	29
E1999850	CLOSING DEVICES FOR GLASS U	29
E1999860	CLOSING DEVICES FOR GLASS U	29
E2000100	GLASS CLAMP FOR GROUND ANCHORAGE	9
E2000200	GLASS CLAMP FOR GROUND ANCHORAGE	9
E2000500	GLASS CLAMP FOR GROUND ANCHORAGE	9
E2000600	GLASS CLAMP FOR GROUND ANCHORAGE	9
E2002	90° CURVED ELBOW	14
E2002/26	90° CURVED ELBOW	14
E2012	90° ELBOW	14
E2012/26	90° ELBOW	14
E2015	45° ELBOW	14
E2015/26	45° ELBOW	14
E2017	45° ELBOW	14
E2017/26	45° ELBOW	14
E203	3-WAY CORNER CONNECTOR	16
E203/26	3-WAY CORNER CONNECTOR	16
E2032	3-WAY CORNER CONNECTOR	16
E2032/26	3-WAY CORNER CONNECTOR	16
E2035	4-WAY CORNER CONNECTOR	16
E2035/26	4-WAY CORNER CONNECTOR	16
E2037	4-WAY CORNER CONNECTOR	16
E2037/26	4-WAY CORNER CONNECTOR	16
E2042	3-WAY CONNECTING TEE	15
E2042/26	3-WAY CONNECTING TEE	15
E2045	CROSS CONNECTOR	16
E2045/26	CROSS CONNECTOR	16
E2047	CROSS CONNECTOR	16
E2047/26	CROSS CONNECTOR	16
E2052	ADAPTOR	16
E2052/26	ADAPTOR	16
E2062	INTERNAL CONNECTOR	15

Part No.	Description	Page
E2062/26	INTERNAL CONNECTOR	15
E2067	WALL FLANGE	17
E2100100	GLASS CLAMP FOR GROUND ANCHORAGE	9
E2100200	GLASS CLAMP FOR GROUND ANCHORAGE	9
E2100500	GLASS CLAMP FOR GROUND ANCHORAGE	9
E2100600	GLASS CLAMP FOR GROUND ANCHORAGE	9
E21200006	GLASS CLAMP FLAT BACK	6
E21200007	GLASS CLAMP FLAT BACK	6
E21200008	GLASS CLAMP FLAT BACK	6
E21200009	GLASS CLAMP FLAT BACK	6
E21200010	GLASS CLAMP FLAT BACK	6
E21200044	GLASS CLAMP FLAT BACK	6
E21204206	GLASS CLAMP	6
E21204207	GLASS CLAMP	6
E21204208	GLASS CLAMP	6
E21204209	GLASS CLAMP	6
E21204210	GLASS CLAMP	6
E21204244	GLASS CLAMP	6
E21204806	GLASS CLAMP	6
E21204807	GLASS CLAMP	6
E21204808	GLASS CLAMP	6
E21204809	GLASS CLAMP	6
E21204810	GLASS CLAMP	6
E21204844	GLASS CLAMP	6
E21400013	GLASS CLAMP FLAT BACK	6
E21404213	GLASS CLAMP	6
E21404813	GLASS CLAMP	6
E21500010	GLASS CLAMP FLAT BACK	7
E21500011	GLASS CLAMP FLAT BACK	7
E21500012	GLASS CLAMP FLAT BACK	7
E21500013	GLASS CLAMP FLAT BACK	7
E21504210	GLASS CLAMP	7
E21504211	GLASS CLAMP	7
E21504212	GLASS CLAMP	7
E21504213	GLASS CLAMP	7
E21504810	GLASS CLAMP	7
E21504811	GLASS CLAMP	7
E21504812	GLASS CLAMP	7
E21504813	GLASS CLAMP	7
E2200100	WALL GLASS CLAMP	9
E2200200	WALL GLASS CLAMP	9
E2200300	WALL GLASS CLAMP	9
E2200400	WALL GLASS CLAMP	9
E316	END CAPS	19
E317	END CAPS	19
E403	FLOOR BASE	17
E403/26	FLOOR BASE	17
E40310	FLOOR BASE (OUTDOOR USE)	18
E40310/26	FLOOR BASE (OUTDOOR USE)	18
E40320	FLOOR BASE (OUTDOOR USE)	18

Part No.	Description	Page
E40320/26	FLOOR BASE (OUTDOOR USE)	18
E40350	SIDE MOUNTED BASE 316	18
E40350/26	SIDE MOUNTED BASE 316	18
E40360	SIDE MOUNTED BASE 316	18
E40360/26	SIDE MOUNTED BASE 316	18
E4040	CROSSBAR HOLDER, INTERMEDIATE	16
E4041	CROSSBAR HOLDER, INTERMEDIATE	16
E4044	CROSSBAR HOLDER, INTERMEDIATE FLAT BACK	16
E4051	DEGREASING SPRAY	59
E4052	PROTECTION SPRAY	59
E4054	STAINLESS STEEL ADHESIVE	59
E406	SIDE MOUNTING BASE	17
E406/26	SIDE MOUNTING BASE	17
E407	SIDE MOUNTING BASE	17
E407/26	SIDE MOUNTING BASE	17
E4072/C	COVER PLATE	18
E4073	COVER PLATE	18
E4120	END CAPS	19
E4120/26	END CAPS	19
E4130	END CAP WITH M8 316	19
E4130/26	END CAP WITH M8 316	19
E4131	END CAP WITH M8 316	19
E4131/26	END CAP WITH M8 316	19
E4135/26	END CAP PLAIN 316	19
E446	ADJUSTABLE ELBOW	14
E4461	ADJUSTABLE ELBOW	14
E4462	ADJUSTABLE ELBOW	14
E4463	ADJUSTABLE ELBOW	14
E4471	ARTICULATED ELBOW	15
E4471/26	ARTICULATED ELBOW	15
E4472	ARTICULATED ELBOW	15
E4472/26	ARTICULATED ELBOW	15
E450	90° CURVED ELBOW	14/41
E450/26	90° CURVED ELBOW	14
E450/304	90° CURVED ELBOW	14
E451	90° ELBOW	14
E451/26	90° ELBOW	14
E451/304	90° ELBOW	14
E452	90° FLAT END	14
E45210	90° FLAT END	14
E453	3-WAY CONNECTING TEE	15
E453/26	3-WAY CONNECTING TEE	15
E454	ADAPTOR	16
E454/26	ADAPTOR	16
E455	INTERNAL CONNECTOR	15
E455/26	INTERNAL CONNECTOR	15
E455/304	INTERNAL CONNECTOR	15
E456	WALL FLANGE	17
E4561	ELBOW WITH FLANGE	18
E4562	ELBOW WITH FLANGE	18

Part No.	Description	Page
E4566	ELBOW WITH FLANGE	18
E4567	ELBOW WITH FLANGE	18
E459	WALL SUPPORT	20
E465	END CAPS	19
E465/26	END CAPS	19
E466	END CAPS	19
E466/26	END CAPS	19
E481	90° FLAT END	14
E482	90° FLAT END	14
E491	TUBE ADAPTER WITH SATIN FINISH - 316	16
E491/26	TUBE ADAPTER WITH SATIN FINISH - 316	16
E492	TUBE ADAPTER WITH SATIN FINISH - 316	16
E492/26	TUBE ADAPTER WITH SATIN FINISH - 316	16
E500/424	HANDRAIL SUPPORTS WITH ADJUSTABLE HEIGHT	21
E510/424	HANDRAIL SUPPORTS WITH ADJUSTABLE HEIGHT	21
E5587	ARTICULATED ELBOW	15
E5587/304	ARTICULATED ELBOW	15
E5588/26	ARTICULATED ELBOW	15
EA04	STOPPER FOR WIRE ROPE WITH SET SCREW	46
EA04316	STOPPER FOR WIRE ROPE WITH SET SCREW	46
EA05	STOPPER FOR WIRE ROPE WITH SET SCREW	46
EA05316	STOPPER FOR WIRE ROPE WITH SET SCREW	46
EB06	STOPPER WASHER FOR THREADED TERMINALS	46
EB061	STOPPER WASHER FOR THREADED TERMINALS	46
EB061316	STOPPER WASHER FOR THREADED TERMINALS	46
EB063	STOPPER WASHER FOR THREADED TERMINALS	46
EB06316	STOPPER WASHER FOR THREADED TERMINALS	46
EB063316	STOPPER WASHER FOR THREADED TERMINALS	46
EB07	STOPPER WASHER FOR THREADED TERMINALS	46
EB071	STOPPER WASHER FOR THREADED TERMINALS	46
EB071316	STOPPER WASHER FOR THREADED TERMINALS	46
EB073	STOPPER WASHER FOR THREADED TERMINALS	46
EB07316	STOPPER WASHER FOR THREADED TERMINALS	46
EB073316	STOPPER WASHER FOR THREADED TERMINALS	46
ED05	ADJUSTABLE CONNECTOR	47
ED05316	ADJUSTABLE CONNECTOR	47
ED06	FINIAL WITH HEXAGON THREAD	47
ED06SX	FINIAL WITH HEXAGON THREAD	47
ED07	FASTENING SCREWS	47
ED07SX	FASTENING SCREWS	47
EF7X1904	STAINLESS STEEL ROPE	46
EF7X1905	STAINLESS STEEL ROPE	46
EF7X1906	STAINLESS STEEL ROPE	46
EF7X704	STAINLESS STEEL ROPE	46
EF7X705	STAINLESS STEEL ROPE	46
EF7X706	STAINLESS STEEL ROPE	46
ELED0001	LED CABLE	38
ELED0002	LED CABLE CONNECTORS	39
ELED0003	LED CABLE CONNECTORS	39
ELED0004	LED CABLE CONNECTORS	39

Part No.	Description	Page
ELED0005	LED CABLE CONNECTORS	39
ELED0006	LED SUPPORTING BRACKET	40
ELED0100	FEEDERS	39
ELED0110	FEEDERS	39
ELED0120	FEEDERS	39
ELED0130	FEEDERS	39
ELED1000	SPOT LIGHTS	44
ELED1100	SPOT LIGHT FLAT FACE	44
ELED2000	SPOT LIGHT	44
ELED2100	SPOT LIGHT FLAT FACE	44
ESF04	SUPPORT FOR EXTERNAL WIRE ROPES WITH CRIMPED TERMINALS	48
ESF041	SUPPORT FOR EXTERNAL WIRE ROPES WITH CRIMPED TERMINALS	48
ESF041316	SUPPORT FOR EXTERNAL WIRE ROPES WITH CRIMPED TERMINALS	48
ESF043	SUPPORT FOR EXTERNAL WIRE ROPES WITH CRIMPED TERMINALS	48
ESF04316	SUPPORT FOR EXTERNAL WIRE ROPES WITH CRIMPED TERMINALS	48
ESF043316	SUPPORT FOR EXTERNAL WIRE ROPES WITH CRIMPED TERMINALS	48
ESF05	SUPPORT FOR EXTERNAL WIRE ROPES WITH CRIMPED TERMINALS	48
ESF051	SUPPORT FOR EXTERNAL WIRE ROPES WITH CRIMPED TERMINALS	48
ESF051316	SUPPORT FOR EXTERNAL WIRE ROPES WITH CRIMPED TERMINALS	48
ESF053	SUPPORT FOR EXTERNAL WIRE ROPES WITH CRIMPED TERMINALS	48
ESF05316	SUPPORT FOR EXTERNAL WIRE ROPES WITH CRIMPED TERMINALS	48
ESF053316	SUPPORT FOR EXTERNAL WIRE ROPES WITH CRIMPED TERMINALS	48
ESF06	SUPPORT FOR EXTERNAL WIRE ROPES WITH CRIMPED TERMINALS	48
ESF061	SUPPORT FOR EXTERNAL WIRE ROPES WITH CRIMPED TERMINALS	48
ESF061316	SUPPORT FOR EXTERNAL WIRE ROPES WITH CRIMPED TERMINALS	48
ESF063	SUPPORT FOR EXTERNAL WIRE ROPES WITH CRIMPED TERMINALS	48
ESF06316	SUPPORT FOR EXTERNAL WIRE ROPES WITH CRIMPED TERMINALS	48
ESF063316	SUPPORT FOR EXTERNAL WIRE ROPES WITH CRIMPED TERMINALS	48
ESF08	SUPPORT FOR EXTERNAL WIRE ROPES WITH CRIMPED TERMINALS	48
ESF081	SUPPORT FOR EXTERNAL WIRE ROPES WITH CRIMPED TERMINALS	48
ESF081316	SUPPORT FOR EXTERNAL WIRE ROPES WITH CRIMPED TERMINALS	48
ESF083	SUPPORT FOR EXTERNAL WIRE ROPES WITH CRIMPED TERMINALS	48
ESF08316	SUPPORT FOR EXTERNAL WIRE ROPES WITH CRIMPED TERMINALS	48
ESF083316	SUPPORT FOR EXTERNAL WIRE ROPES WITH CRIMPED TERMINALS	48
EST041DX	TERMINAL SUPPORT FOR EXTERNAL WIRE ROPE	48
EST041SX	TERMINAL SUPPORT FOR EXTERNAL WIRE ROPE	48
EST043DX	TERMINAL SUPPORT FOR EXTERNAL WIRE ROPE	48
EST043SX	TERMINAL SUPPORT FOR EXTERNAL WIRE ROPE	48
EST04DX	TERMINAL SUPPORT FOR EXTERNAL WIRE ROPE	48
EST04SX	TERMINAL SUPPORT FOR EXTERNAL WIRE ROPE	48
EST051DX	TERMINAL SUPPORT FOR EXTERNAL WIRE ROPE	48
EST051SX	TERMINAL SUPPORT FOR EXTERNAL WIRE ROPE	48
EST053DX	TERMINAL SUPPORT FOR EXTERNAL WIRE ROPE	48
EST053SX	TERMINAL SUPPORT FOR EXTERNAL WIRE ROPE	48
EST05DX	TERMINAL SUPPORT FOR EXTERNAL WIRE ROPE	48
EST05SX	TERMINAL SUPPORT FOR EXTERNAL WIRE ROPE	48
ET06	ADJUSTABLE ROPE JOINT/TENSIONER WITH TWO M6 THREADS	47
ETF04DX	THREADED INSIDE TERMINALS	46
ETF04SX	THREADED INSIDE TERMINALS	46
ETF05DX	THREADED INSIDE TERMINALS	46

Part No.	Description	Page
ETF05SX	THREADED INSIDE TERMINALS	46
ETF06DX	THREADED INSIDE TERMINALS	46
ETF06SX	THREADED INSIDE TERMINALS	46
ETFF04	EYE TERMINAL TO CRIMP	47
ETFF05	EYE TERMINAL TO CRIMP	47
ETFF06	EYE TERMINAL TO CRIMP	47
ETFM06DX	THREADED EYE STUD M6	47
ETFM06SX	THREADED EYE STUD M6	47
ETFS04	WELDED FORK TERMINAL TO CRIMP	48
ETFT04	FORK TERMINAL TO CRIMP	47
ETFS05	WELDED FORK TERMINAL TO CRIMP	48
ETFT05	FORK TERMINAL TO CRIMP	47
ETFS06	WELDED FORK TERMINAL TO CRIMP	48
ETFT06	FORK TERMINAL TO CRIMP	47
ETM04DX	THREADED TERMINALS	46
ETM04SX	THREADED TERMINALS	46
ETM05DX	THREADED TERMINALS	46
ETM05SX	THREADED TERMINALS	46
ETM06DX	THREADED TERMINALS	46
ETM06SX	THREADED TERMINALS	46
ETM506DX	WELDED THREADED FORK STUD M6	47
ETM506SX	WELDED THREADED FORK STUD M6	47
ETMS06DX	THREADED FORK STUD M6	48
ETMS06SX	THREADED FORK STUD M6	48
ETSM10	M6 SWAGELESS FORK TERMINAL	48
ETSM12	M6 SWAGELESS FORK TERMINAL	48
ETSM8	M6 SWAGELESS FORK TERMINAL	48
ETTB04304	DOME HEAD TERMINAL FOR WIRE ROPE TO CRIMP	48
ETTB05304	DOME HEAD TERMINAL FOR WIRE ROPE TO CRIMP	48
ETTB06304	DOME HEAD TERMINAL FOR WIRE ROPE TO CRIMP	48
X0069	ROUND BAR HOLDERS	51
X006910	ROUND BAR HOLDERS	51
X006910316	ROUND BAR HOLDERS	51
X0069991316	ROUND BAR HOLDERS	51
X0070316	PIVOTING ROUND BAR CONNECTOR	52
X00840	ROUND CLAMPS	51
X00840/C	STAINLESS STEEL CLOSURE FOR ROUND CLAMPS	51
X0102316	HANDRAIL SUPPORT	54
X0104316	HANDRAIL SUPPORT	54
X011316	END CAPS	56
X01151316	END CAPS	56
X0119316	END CAPS	56
X02231316	WALL HANDRAIL SUPPORT	53
X0223316	WALL HANDRAIL SUPPORT	53
X030/S316	HANDRAIL SUPPORT	53
X031/S1316	HANDRAIL SUPPORT	53
X113316	LATERAL ANCHORAGE	52
X4042	ROUND BAR HOLDERS	51
X40650	ROUND BAR HOLDERS	51
X4072	FLANGE CANOPIES	52

Part No.	Description	Page
X4308	SPHERE FINIALS	56
X4309	SPHERE FINIALS	56
X4311	SPHERE FINIALS	56
X4312	SPHERE FINIALS	56
X446	PIVOTING CONNECTOR	55
X4471	ARTICULATED ELBOW	55
X4483	LATERAL ANCHORAGE	52
X450	90° ELBOW	55
X451	90° ANGLE	55
X452	90° BEND END CAP	55
X453	3 WAY FLUSH "T"	55
X454	HANDRAIL SUPPORT	54
X455	TUBE CONNECTOR	55
X456	ANCHORAGES FOR HANDRAILS	52
X4561	PIVOTING ROUND BAR CONNECTOR	52
X458	HANDRAIL SUPPORT	54
X4581	HANDRAIL SUPPORT	54
X465	END CAPS	56
X468/424	TUBE ADAPTER	54
X4801	MIRROR POLISHED TUBES	51
X4851	MIRROR POLISHED ROUND BARS	51
XL2421205F	NEWEL POSTS	57
XL2421205S	NEWEL POSTS	58
XL2421207F	NEWEL POSTS	57
XL2421207S	NEWEL POSTS	58
XL4421205F	NEWEL POSTS	57
XL4421205S	NEWEL POSTS	58
XL4421207F	NEWEL POSTS	57
XL4421207S	NEWEL POSTS	58
XM2421205F	NEWEL POSTS	57
XM2421205F90	NEWEL POSTS	57
XM2421205S	NEWEL POSTS	57
XM2421207F	NEWEL POSTS	57
XM2421207F90	NEWEL POSTS	57
XM2421207S	NEWEL POSTS	57
XM4421205F	NEWEL POSTS	57
XM4421205F90	NEWEL POSTS	57
XM4421205S	NEWEL POSTS	57
XM4421207F	NEWEL POSTS	57
XM4421207F90	NEWEL POSTS	57
XM4421207S	NEWEL POSTS	57
XP24202PF	NEWEL POSTS	58
XP24202PS	NEWEL POSTS	58
XP24204PF	NEWEL POSTS	58
XP24204PF90	NEWEL POSTS	58
XP44202PF	NEWEL POSTS	58
XP44202PS	NEWEL POSTS	58
XP44204PF	NEWEL POSTS	58
XP44204PF90	NEWEL POSTS	58





AALCO is a registered trademark of Aalco Metals Ltd

www.aalco.co.uk

Aalco is the UK's largest independent multi-metals stockholder. Customers from every sector of UK manufacturing and engineering industry, whether small local businesses or large multinational corporations, benefit from a cost-effective single source for all their metals requirements.

- An inventory that includes aluminium, stainless steel, copper, brass, bronze and nickel alloys in all semifinished forms
- Comprehensive processing services providing items cut and/or finished to customer requirements
- Eighteen locations bringing local service to every corner of the UK
- Ongoing investment in technology and logistics to ensure on-time delivery

No order is too large or too small and Aalco offers a responsive and competitive service for supplying anything from single item orders to major JIT contracts, tailoring this service to the individual needs.

Whatever your requirement, in whatever quantity, your local Aalco service centre is ready and willing to satisfy your needs. For a quotation, for further information, more extensive technical information, advice on product selection or to place an order, please contact your local Aalco service centre or refer to the web site.

ABERDEEN

Tel 01224 854810
Fax 01224 871982
e-mail aberdeen@aalco.co.uk

AYLESBURY

Tel 01296 461700
Fax 01296 339923
e-mail aylesbury@aalco.co.uk

BELFAST

Tel 02890 838 838
Fax 02890 837 837
e-mail belfast@aalco.co.uk

BIRMINGHAM

Tel 0121 585 3600
Fax 0121 585 6864
e-mail birmingham@aalco.co.uk

CHEPSTOW

Tel 01291 638 638
Fax 01291 638 600
e-mail chepstow@aalco.co.uk

DYFED

Tel 01269 842044
Fax 01269 845276
e-mail dyfed@aalco.co.uk

ESSEX

Tel 01268 884200
Fax 01268 884220
e-mail essex@aalco.co.uk

GLASGOW

Tel 0141 646 3200
Fax 0141 646 3260
e-mail glasgow@aalco.co.uk

HULL

Tel 01482 626262
Fax 01482 626263
e-mail hull@aalco.co.uk

LEEDS

Tel 0113 276 3300
Fax 0113 276 0382
e-mail leeds@aalco.co.uk

LIVERPOOL

Tel 0151 207 3551
Fax 0151 207 2657
e-mail liverpool@aalco.co.uk

MANCHESTER

Tel 01204 863456
Fax 01204 863430
e-mail manchester@aalco.co.uk

NEWCASTLE

Tel 0191 491 1133
Fax 0191 491 1177
e-mail newcastle@aalco.co.uk

NORWICH

Tel 01603 787878
Fax 01603 789999
e-mail norwich@aalco.co.uk

NOTTINGHAM

Tel 0115 988 2600
Fax 0115 988 2636
e-mail nottingham@aalco.co.uk

SOUTHAMPTON

Tel 023 8087 5200
Fax 023 8087 5275
e-mail southampton@aalco.co.uk

STOKE

Tel 01782 375700
Fax 01782 375701
e-mail stoke@aalco.co.uk

SWANLEY

Tel 01322 610900
Fax 01322 610910
e-mail swanley@aalco.co.uk



Also available
in Ireland

DUBLIN

Tel +353 (0) 1 629 8600
Fax +353 (0) 1 629 9200
e-mail: dublin@amari-dublin.com

CORK

Tel +353 (0) 21 431 0520
Fax +353 (0) 21 431 0519
e-mail: cork@amari-cork.com