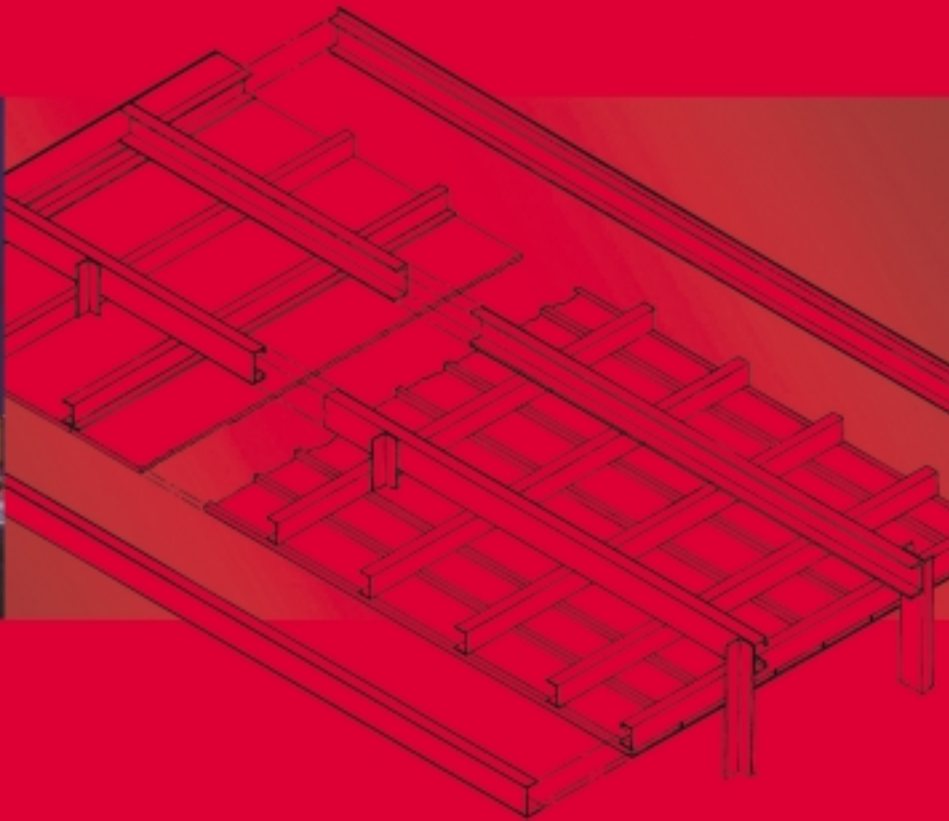


aalco[®]

Road Transport Bodybuilding Manual



Bodybuilding with Aalco®

This publication is intended as a guide to the Bodybuilder. It will aid in the selection of extruded aluminium sections and various other Aalco® components, with which to build a range of body types from flatbed trucks to frame and panel van bodies.

It is by no means mandatory and the innovative designer will no doubt find many other uses and variations of construction for the sections shown in the Aalco® Road Transport Catalogue.

The body types illustrated are as follows:

Fig. 1 General Arrangement of Typical Underframe

Fig. 2 Typical Roof Assembly

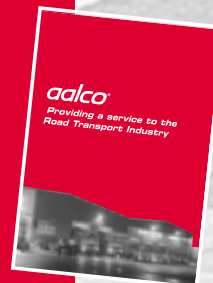
Fig. 3 Dropside Trucks

Fig. 4 GRP Panelled Van Bodies

Fig. 5 Frame and Panel Van Bodywork

Fig. 6 Curtainsider Bodies

This publication should be used in conjunction with the current Road Transport Catalogue. It will be updated as more sections and components become available.



Technical Publication

No. 002

February 2005

Contents

Pages 2-3

General Arrangement of Typical Underframe

Pages 4-5

Typical Roof Assembly

Pages 6-7

Dropside Trucks

Pages 8-9

GRP Panelled Van Bodies

Pages 10-11

Frame and Panel Van Bodywork

Pages 12-13

Curtainsider Bodies

The information contained herein is based on our present knowledge and experience and is given in good faith. However, no liability will be accepted by the Company in respect of any action taken by any third party in reliance thereon.

As the products detailed herein may be used for a wide variety of purposes and as the Company has no control over their use, the Company specifically excludes all conditions or warranties expressed or implied by statute or otherwise as to dimensions, properties and/or their fitness for any particular purpose. Any advice given by the Company to any third party is given for that party's assistance only and without any liability on the part of the Company.

Any contract between the Company and a customer will be subject to the Company's Conditions of Sale. The extent of the Company's liabilities to any customer is clearly set out in those Conditions; a copy of which is available on request.

Aalco® is a registered trademark of Amari Metals Limited.

General Arrangement of Typical Underframe

FIG. 1

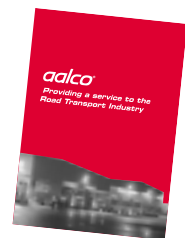
Item	Part No.	Description
1	FB1 FB4 FB8	Aluminium Alloy Lipped Channels, for Bearers and Runners.
	GB2 GB23 GB3	Galvanised Steel Lipped Channels, for Bearers and Runners.
2		Standard Bearers, Runners and Pillar Sections, specified by size Channels.
	GR5-100 GR5-127 GR5-150	Galvanised Steel Plain Channel Sections, for Bearers and Runners.
3	FB3	Flanged Channel Bearer, to accommodate Transverse Joints on Panelled Floors.
4	FB2 FB11 FB12	Channel Bearer Sections with Skirts. Used front and rear, as appropriate.
	FL-BD18	Slip resistant, phenolic mesh faced plywood. Size 2440 x 1220 x 18 thick.
6	FP1 FP2 FP4 FP12 FP15 FP16	Interlocking/Half Lap Floor Plank of various profiles, generally laid longitudinally over Bearers, but may be laid transversely and secured directly to Runner Sections.

Item	Part No.	Description
7	SR1 SR3 SR4 SR5	Side Rave/Mainside Sections for various types of bodywork, but more generally suited to Truck and Flatbed Bodies.
	SR11 SR14 SR22	Dedicated Rave Sections for Curtainsider Bodies will be considered for manufacture on request.
	SR38 SR45 SR56 SR61 SR1P SR2P	Mainside (Side Rave) Sections for GRP Panelled Van Bodies and Frame and Panel Bodywork.
	SR11 SR14	May be used in 'panel over' construction of van bodies, where Panel extends over Rave to bottom edge of Flange.

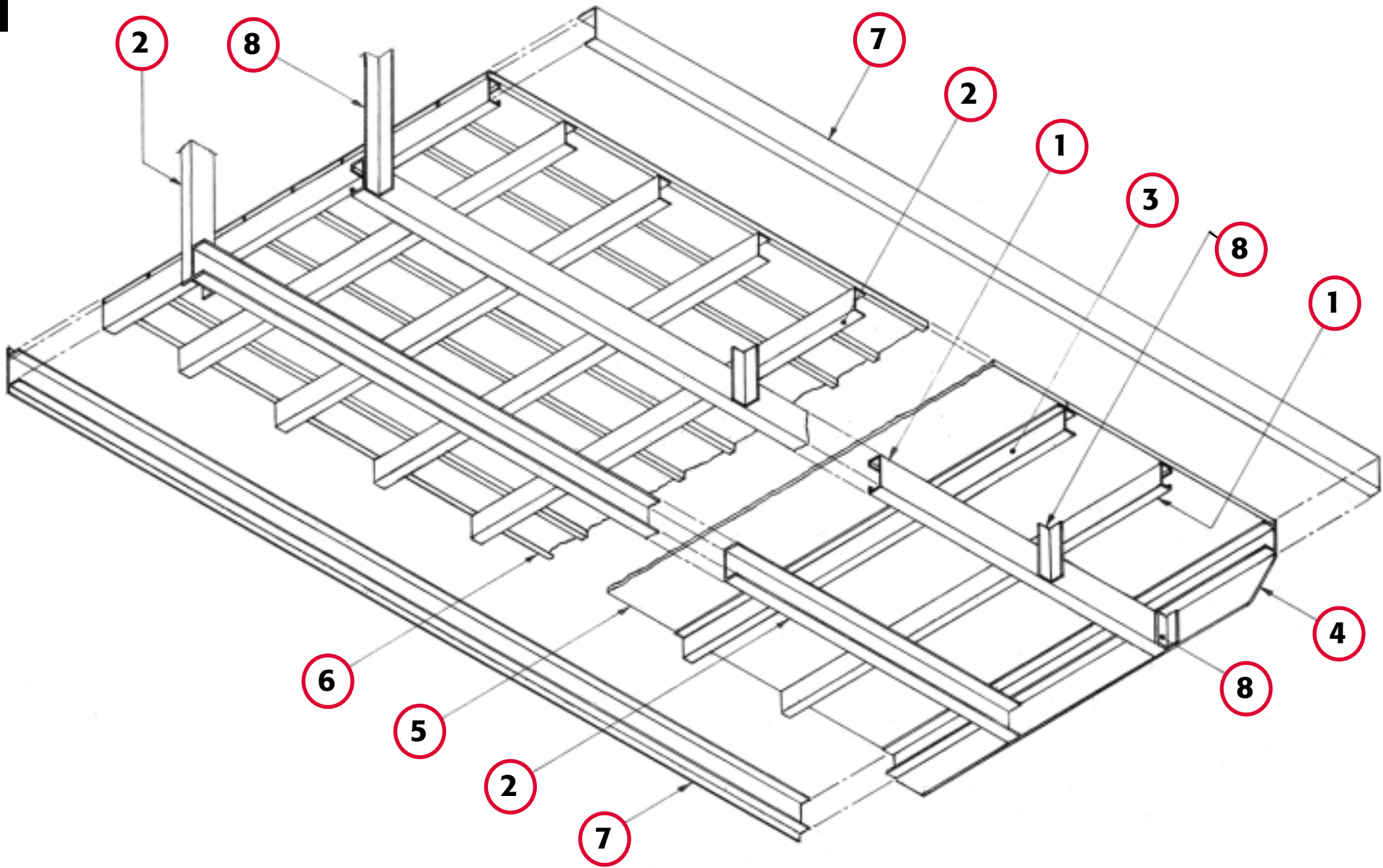
Standard Angles

For Bulkhead and Corner Pillars, also as Runner to Bearer Cleat Angles etc. Specified by size.

Part No. refers to Aalco® Road Transport Catalogue



Frame viewed from underside



Typical Roof Assembly

FIG. 2

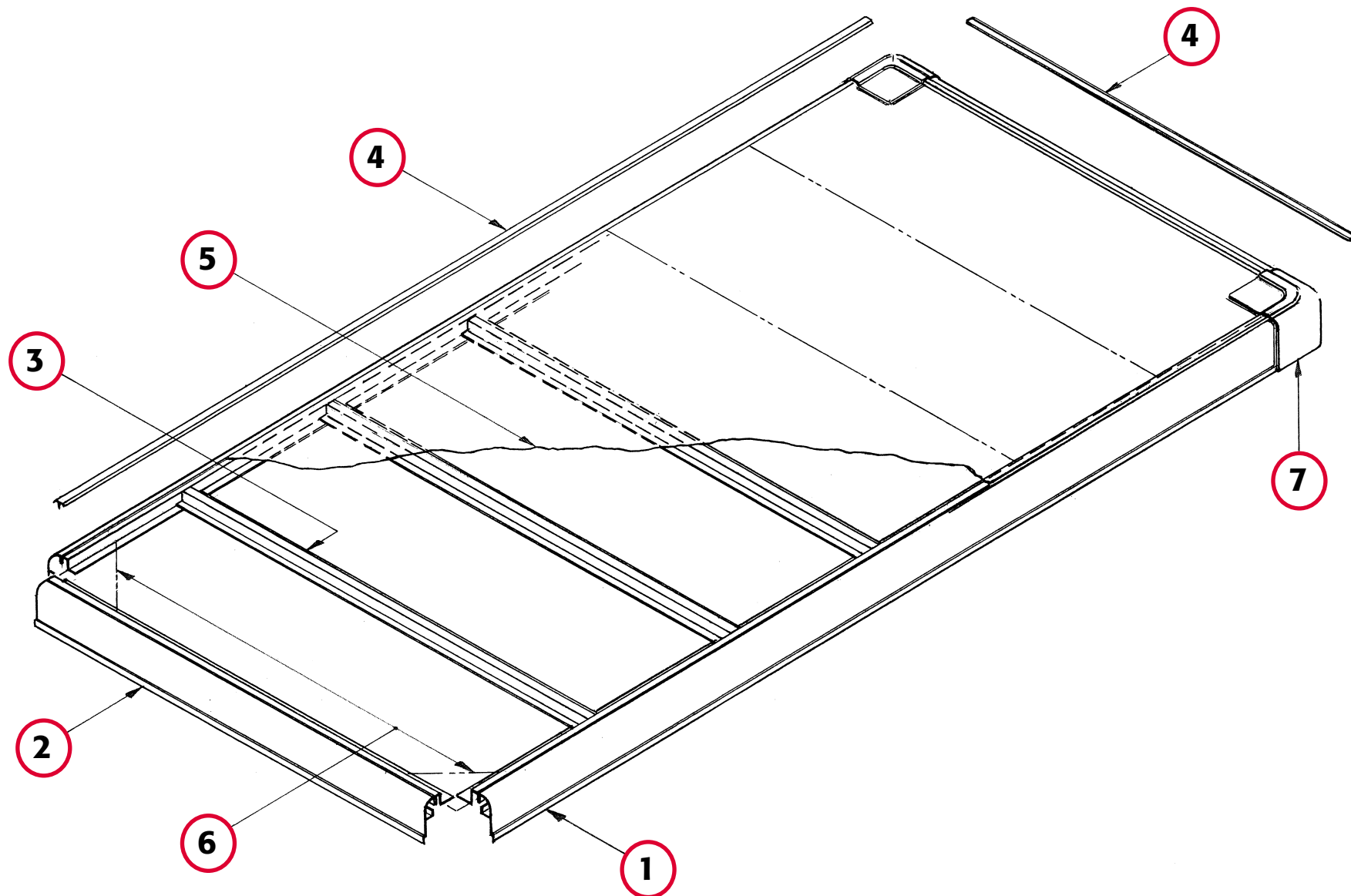
Item	Part No.	Description
1&2	CR25*	Cantrail and Headbar sections for Dryfreight Van and Curtain Sided Bodies. These sections may also be suitable for the construction of insulated roof assemblies.
	CR29	
	CR31	
	CR50*	
	CR58	
	CR75	
	CR127	
	CCR50*	
	CCR60	
	RSC01	
3	TH2	Top Hat Sections, commonly used for Roofsticks which may be straight or cambered.
	TH26	
	TH30	
	GZ28	Zed Section, may be used as Roofstick where appropriate.
4	M102	Mouldings, used primarily for periphery capping of Roof Skins over top Flanges of Cantrails and Headbars. Each section secured with Fasteners through Roof Skin, plus Sealant/Adhesive.
	M103	
	M104	
	M105	
	M106	
5	To Spec.	Roof Sheet (Skin) Aluminium or GRP one-piece Coil Stock.
6	To Order	Corner Gussets, cut from Aluminium or Galvanised Steel Sheet/Plate.

Item	Part No.	Cantrail	Description
7	CC9	CR29	Vacuum formed ABS, Plant-On Roof Corner Caps dedicated to the sections as listed. All caps may be bonded to the finished body, after assembly of the roof to the main body structure. One part Sealant/Adhesive Detaflex 4000 is recommended with the addition of two Self Tapping Screws, placed one in each vertical corner of the cap.
	CC15	CR29	
	CC80	CPFT1	
	CC36	CPFT2	
	CC1002	CR31	
	CC1001	CR31	
	CC1004	CR50	
	CC1004	CCR50	
	CC1004	RSC01	
	CC1005	CR50	
	CC1005	CCR50	
	CC1005	RSC01	
	CC1007	CR25	
	CC1007	RSC01	
CC1007	CR58		
CC1007	CCR60		

Part No. refers to Aalco® Road Transport Catalogue



Upper face of roof



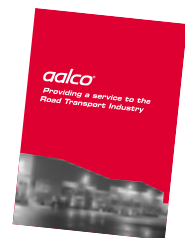
Dropside Trucks

FIG. 3

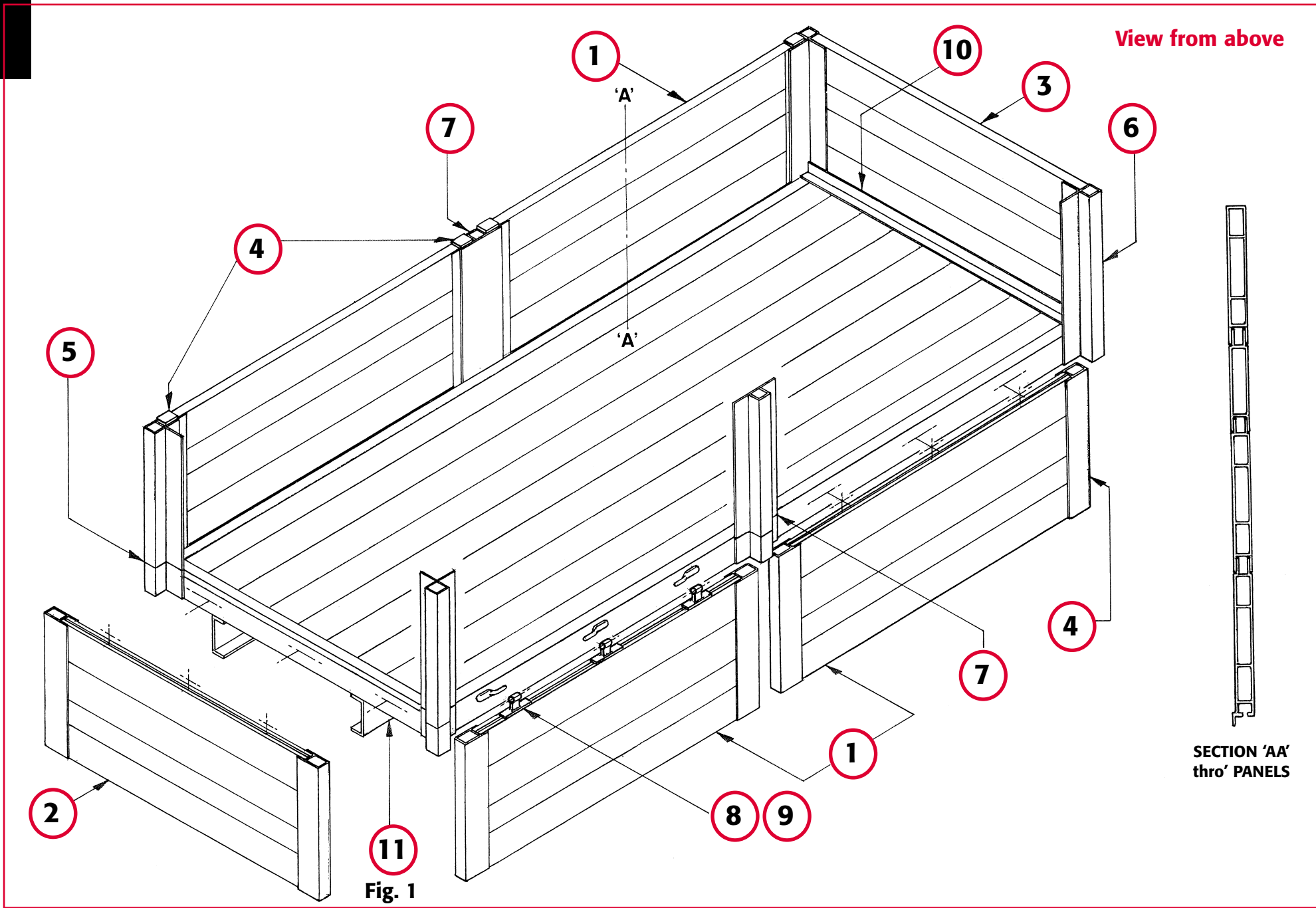
Item	Part No.	Description
1&2	DSTP200 DSIP200 DSIP100 DSBP200 DC140	Matching clip together Plank Sections of 100 and 200mm effective width, to make up into panels of any depth in 100mm increments. Suitable for Dropsides and Tailboard. A dedicated Channel Section End Capping.
NEW	DS400	A one piece 400mm Dropside Panel.
3	As Above	Bulkhead may use the same sections and be reinforced by standard Aalco Sections.
4	JH5-400 EC8-16	Dedicated End Capping Sections to house locking mechanism for 400mm deep Dropside Panels. Supplied with End Plugs. Heavy Duty (Zinc Plated Steel) version of above.
5	JH2-380 CNR6-16	Detachable Rear Corner Pillar and Socket. Heavy Duty (Zinc Plated Steel) version of above.
6		Fixed front Corner Pillar, sections as Item 5 of increased length to allow direct attachment to underframe.
7	JH1-380 CTR7-16	Detachable Intermediate Pillar and Socket. Heavy Duty (Zinc Plated Steel) version of above.
8	DH300W	Hinge Set, dedicated to Side and Tailboard Panels Bottom Plank DSBP 200.
9	RL694B	Flush fitting, Overcentre Lock (not illustrated) to fit Top Plank DSTP200 at both ends.

Item	Part No.	Description
10	Standard Angle	Floor/Bulkhead Joint Angle Section, typically 2 x 2 x 3/16, 3 x 2 x 3/16 or 4 x 2 x 1/4 depending on loading requirements of body.
11	Fig. 1	Typical Underframe Construction as illustrated.

For a copy of the Aalco® Catalogue covering our extensive product range, please call your local branch. Full details on the reverse of this manual.



Part No. refers to Aalco® Road Transport Catalogue



View from above

Fig. 1

SECTION 'AA'
thro' PANELS

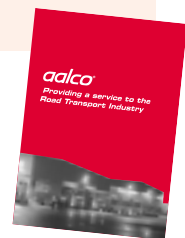
GRP Panelled Van Bodies

FIG. 4

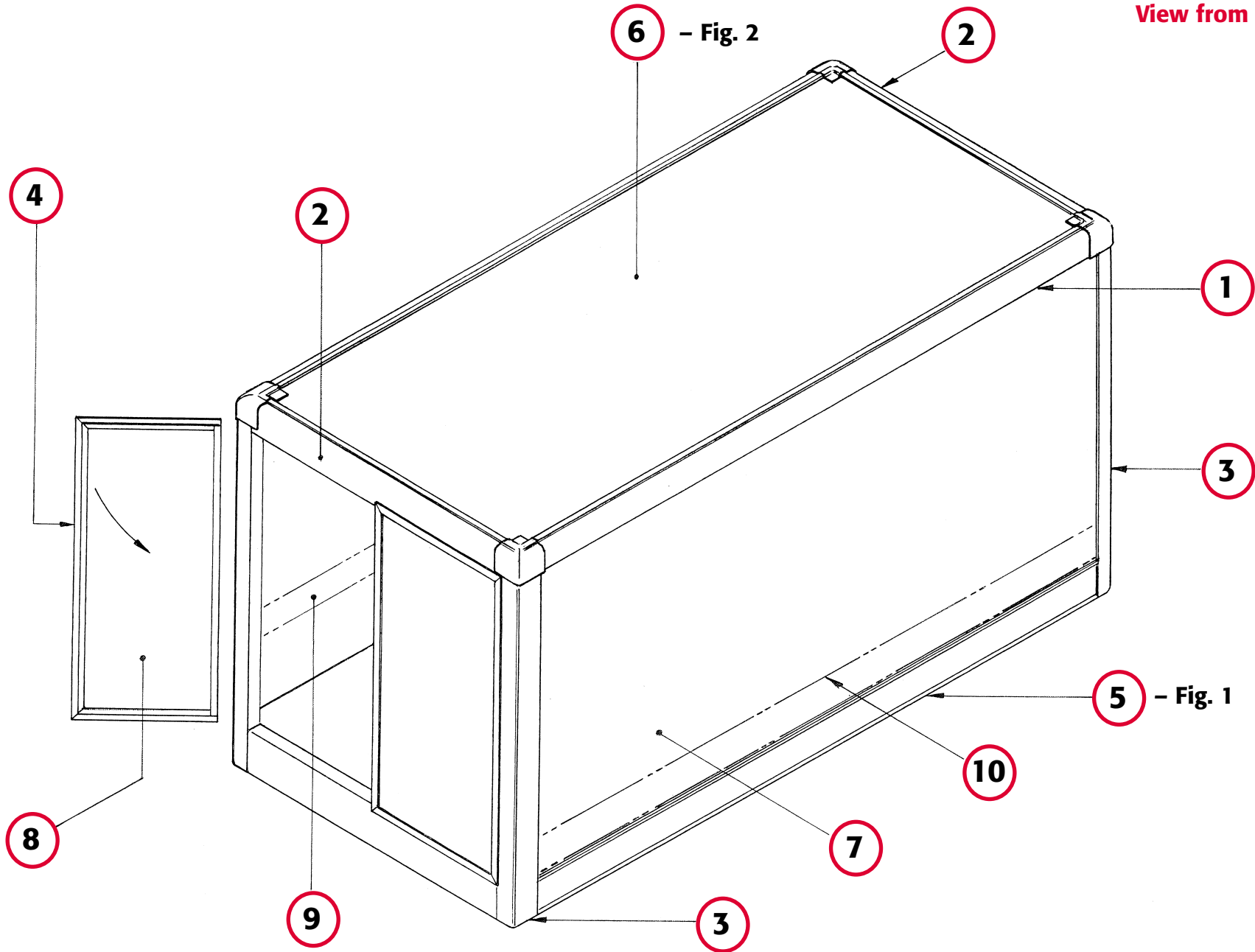
Item	Part No.	Description
1&2	CR25 CR29 CR31 CR50 CR58 CR75 CR127	Cantrails and Headbars. These sections are applicable to GRP Panelled Construction, but may be adapted to Frame and Panel Bodywork (Fig. 5).
3	CP18 CP25 CP50 CP75 CP127 CP150 CPFT1 CPFT2	Corner Pillars suitable for GRP Panelled Construction, but may be adapted to Frame and Panel Bodywork (Fig. 5). These sections may also be used as outer Corner Cappings on insulated and refrigerated bodies.
4	DC1P11 DC2P11 DC1P14 DC2P14 DC1P17 DC2P17 DC1P22 DC2P22	Door Panel Mouldings (Edge Cappings) may be used on door panels and apertures of GRP or Metal Faced Plywood with overall thicknesses of 11,14,17 or 22mm.
5	Fig. 1 SR38 SR45 SR56 SR61 SR1P SR2P	Underframe Assembly. Basic Assembly used with dedicated Rave/Mainside Sections as listed, with GRP/Plywood Aluminium and Composite Panels.

Item	Part No.	Description
6	Fig. 2	Roof Assembly complete.
7	N/A	GRP/Plywood Laminated Panels of various thicknesses, obtainable direct from manufacturers, cut to size and in various colour/surface texture finishes.
8	N/A	Door Panels, plywood based with GRP, metal or phenolic resin skins, in various thicknesses.
9	TH2 TH14 TH21 TH61 TH90 FP15 FP16 KS454 KS456	Interior Rub Rails, Load Restraint Rails, Crash Bars and Kick Strips.
10	TH14 TH61 TH90 FP15 TH2 CC28 for TH14 CC38 for TH61 CC35 for TH90 CC24 for FP15 CC14 for TH2	Exterior Rub Rails with Cast Aluminium End Blanking Caps. Cast Aluminium End Blanking Caps for the above sections.

Part No. refers to Aalco® Road Transport Catalogue



View from above



Frame and Panel Van Bodywork

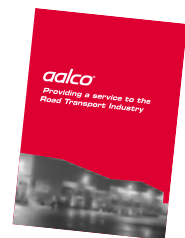
FIG. 5

Item	Part No.	Description
1	CP1	Corner Pillars, suitable for frame and panel construction but not necessarily forming a complete assembly. (Radiused GRP Van Corner Pillars may be added externally – See Fig. 4.)
	CP2	
	CP5	
	CP10	
	CP11	
	CP14	
	TH30	
		Edge Section used in Corners.
2	TH2	Intermediate Pillar Sections, both Top Hat and Zed, covering a wide range of body construction from Lightweight Vans to Articulated Semi-trailers.
	TH5	
	TH14	
	TH26	
	GZ28	Zed Sections used as appropriate.
	GZ37	
3	TH16	Rub Rails and Tie Rails generally of Top Hat form, suitable for use in Furniture Vans with webbing tie down and heavy duty applications.
	TH14	
	M101	
	TH2	
	TH5	
4	TH14	Load Restraint Rails/Crash Bars, generally used to restrain loose loads forward impacting against front bulkhead. Choice of section depending on load anticipated.
	TH21	
	TH61	
	TH90	
5	KS456	Kick Strips, fitted internally at floor level and above to protect Pillar Sections from Roll Cage and Pallet Truck damage during loading/unloading of vehicle.
	KS454	
	FP15	
	FP16	

Item	Part No.	Description
6	Fig. 1	Underframe Assembly. Basic Assembly used with dedicated Rave/Mainside Sections as listed for Frame and Panel Bodywork.
	SR45	
	SR61	
	SRIP	
	SR2P	
7	Standard Sheet	Exterior Panels of standard sizes and thicknesses as applicable, in alloy specifications 1050-H14, 5251-H22, 3013-H14 and 4015-H12.

Visit our website at:

www.aalco.co.uk



Part No. refers to Aalco® Road Transport Catalogue

Interior view from above
with roof removed

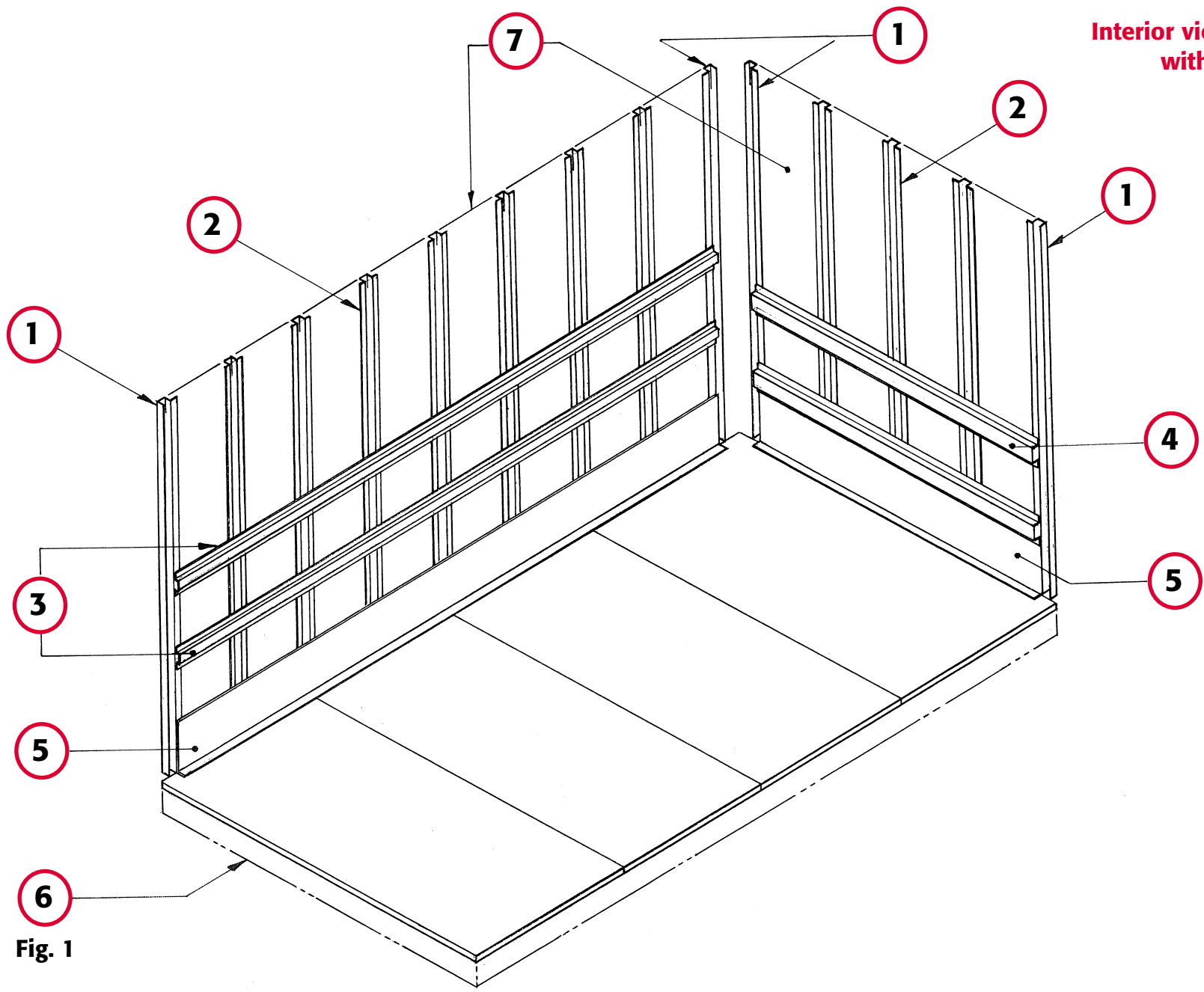


Fig. 1

Curtainsider Bodies

FIG. 6

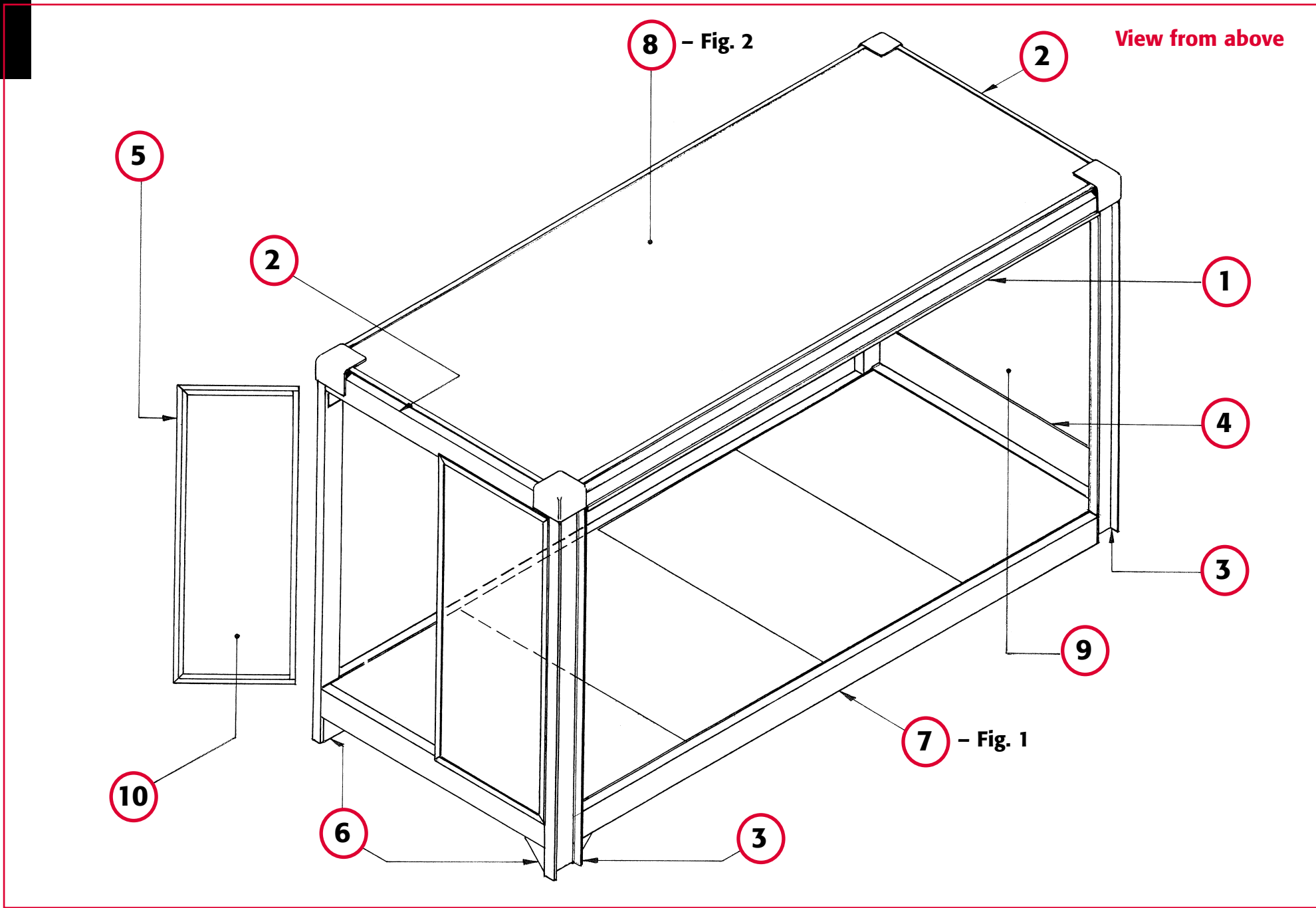
Item	Part No.	Description
1	CCR50 CCR60	Cantrails, dedicated to Curtainsider Bodies construction as part of Roof Assembly – Fig 2.
2	CR50 CR58	Headbars to match above Item 1 Cantrails and Corner Caps CC1005 and CC1007 as listed, Item 6 on Fig. 2.
3	CCP50F CCP50R 4 x 2 x 1/4 5 x 2 x 1/4 6 x 3 x 1/4 CP230 GB3-2550 GR5-127-7 GR5-150-7	Front Rear Corner Pillars of Standard Channel with dedicated sections for Radiused Corners. Radiused Corner Section. 100 x 50 x 3 Lipped Channel 127 x 50 x 5 Plain Channel 150 x 50 x 5 Plain Channel
		These sections in Galvanised Steel may also be suitable.
4	KS456	Kick Strip, Bulkhead/Floor attachment. Standard Angles as Fig. 3 – Item 10 also apply.
5	DC1P11 DC1P14 DC1P17 DC1P22	DC2P11 DC2P14 DC2P17 DC2P22
		Door and Aperture, Edge Capping Sections to suit plywood based door panels of 11,14,17 and 22mm.
6	ND	Corner Gussets in Aluminium or Galvanised Steel to order.
7	Fig. 1	Underframe Assembly – Basic assembly, dedicated Rave Sections will be considered for manufacture on request.

Item	Part No.	Description
8	Fig. 2	Roof Assembly, with dedicated Cantrails and Headbars as Items 1 and 2.
9	N/A	GRP/Plywood, Laminated Bulkhead Panels of various thicknesses, obtainable direct from manufacturers, cut to size and in various colour/surface texture finishes.
10	N/A	Door Panels, plywood based with GRP, metal or phenolic resin facing skins in various thicknesses.



Part No. refers to Aalco® Road Transport Catalogue





Contact Details:

Aberdeen

41 Castle Terrace
Aberdeen
AB11 5EA
Tel: 01224 596611
Fax: 01224 596622
e-mail: aberdeen@aalco.co.uk

Glasgow

117 Clydesmill Place
Cambuslang Investment Park
Glasgow G32 8RF
Tel: 0141 646 3200
Fax: 0141 646 3260
e-mail: glasgow@aalco.co.uk

Manchester

Express Trading Estate
Stone Hill Road
Farnworth, Bolton BL4 9NN
Tel: 01204 863456
Fax: 01204 863430
e-mail: manchester@aalco.co.uk

Nottingham

Harrimans Lane
Dunkirk
Nottingham NG7 2SD
Tel: 0115 988 2600
Fax: 0115 988 2636
e-mail: nottingham@aalco.co.uk

Stoke

Unit F, Forge Way
Brown Lees Industrial Estate
Biddulph, Stoke-on-Trent ST8 7DN
Tel: 01782 375700
Fax: 01782 375701
e-mail: stoke@aalco.co.uk

Birmingham

Shelah Road
Halesowen
West Midlands B63 3PH
Tel: 0121 585 3600
Fax: 0121 585 6864
e-mail: birmingham@aalco.co.uk

Leeds

Unit 1, Revie Road
off Elland Road
Leeds LS11 8JG
Tel: 0113 276 3300
Fax: 0113 276 0382
e-mail: leeds@aalco.co.uk

Newcastle

First Avenue
Team Valley Trading Estate
Gateshead, Tyne & Wear NE11 0NU
Tel: 0191 491 1133
Fax: 0191 491 1177
e-mail: newcastle@aalco.co.uk

Slough

Unit 2, 552 Fairlie Road
Slough Trading Estate
Slough, Berkshire SL1 4PY
Tel: 01753 619900
Fax: 01753 512227
e-mail: slough@aalco.co.uk

Swanley

Units 6 & 7, Pedham Place Ind. Estate
Wested Lane, Swanley
Kent BR8 8TE
Tel: 01322 610900
Fax: 01322 610910
e-mail: swanley@aalco.co.uk

Chepstow

Avenue West
Newhouse Park Estate, Chepstow
Monmouthshire NP16 6UD
Tel: 01291 638 638
Fax: 01291 638 600
e-mail: chepstow@aalco.co.uk

Liverpool

207 Great Howard Street
Liverpool
L5 9ZH
Tel: 0151 207 3551
Fax: 0151 207 2657
e-mail: liverpool@aalco.co.uk

Norwich

Roundtree Way
Mousehold Lane
Norwich NR7 8SR
Tel: 01603 787878
Fax: 01603 789999
e-mail: norwich@aalco.co.uk

Southampton

Test Lane
Nursling
Southampton SO16 9TA
Tel: 02380 875200
Fax: 02380 875275
e-mail: southampton@aalco.co.uk



www.aalco.co.uk